

## Han Domino EE cube, crimp (F.2)

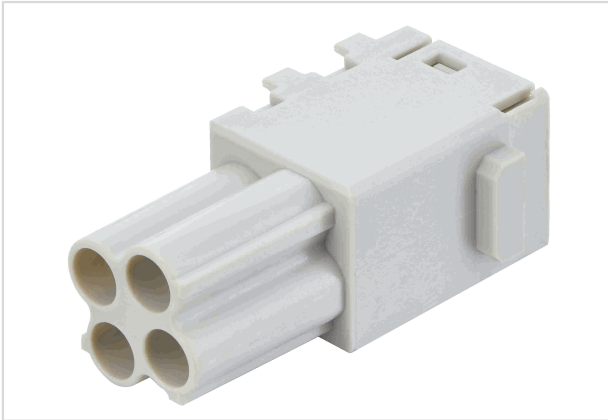


Image is for illustration purposes only. Please refer to product description.

|                    |   |
|--------------------|---|
| Part number        | 09 14 904 2101  |
| Specification      | Han Domino EE cube, crimp (F.2)   |
| HARTING eCatalogue | <a href="https://b2b.harting.com/09149042101">https://b2b.harting.com/09149042101</a> |

### Identification

|                           |                     |
|---------------------------|---------------------|
| Category                  | Modules             |
| Series                    | Han-Modular®        |
| Type of module            | Han® Domino EE Cube |
| Size of the module        | Domino module       |
| Description of the module | Large Tab           |

### Version

|                    |   |
|--------------------|---|
| Termination method | Crimp termination                       |
| Gender             | Female                                  |
| Number of contacts | 4                                       |
| Details            | Please order crimp contacts separately. |

### Technical characteristics

|   |                            |
|---|----------------------------|
| Conductor cross-section                 | 0.14 ... 4 mm <sup>2</sup> |
| Rated current                           | 16 A                       |
| Rated voltage                           | 400 V                      |
| Rated impulse voltage                   | 6 kV                       |
| Pollution degree                        | 3                          |
| Insulation resistance                   | >10 <sup>10</sup> Ω        |
| Limiting temperature                    | -40 ... +125 °C            |
| Mating cycles                           | ≥500                       |
| Mating cycles with other HMC components | ≥10,000                    |



Pushing Performance  
Since 1945

## Material properties

|   |                        |
|---|------------------------|
| Material (insert)                         | Polycarbonate (PC)     |
| Colour (insert)                           | RAL 7032 (pebble grey) |
| Material flammability class acc. to UL 94 | V-0                    |
| RoHS                                      | compliant              |
| ELV status                                | compliant              |
| China RoHS                                | e                      |
| REACH Annex XVII substances               | Not contained          |
| REACH ANNEX XIV substances                | Not contained          |
| REACH SVHC substances                     | Not contained          |

## Specifications and approvals

|                |                          |
|----------------|--------------------------|
| Specifications | IEC 60664-1<br>IEC 61984 |
|----------------|--------------------------|

## Commercial data

|                                |   |
|--------------------------------|---|
| Packaging size                 | 2   |
| Net weight                     | 4.86 g  |
| Country of origin              | Romania   |
| European customs tariff number | 85389099  |
| GTIN                           | 5713140185128   |
| eCl@ss                         | 27440217 Module for industrial connectors (power/signals) |