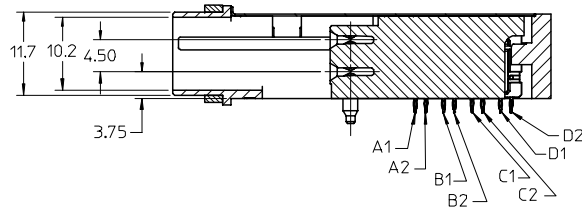
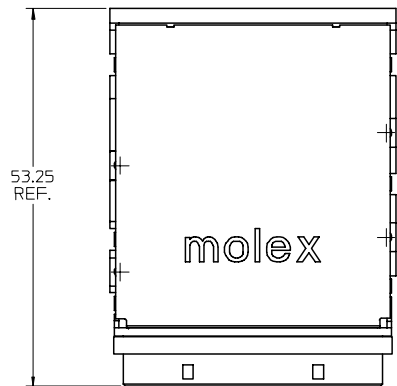


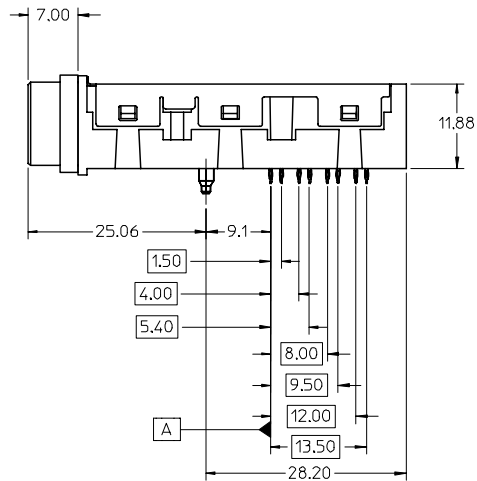
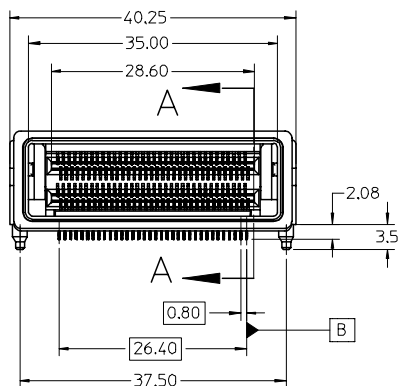
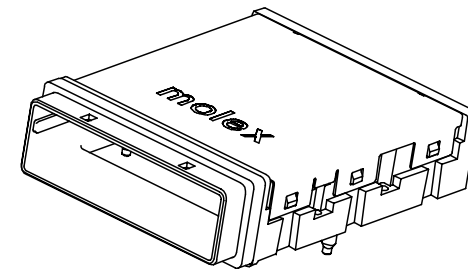
13 12 11 10 9 8 7 6 5 4 3 2 1

J
I
H
G
F
E
D
C
B
A

J
I
H
G
F
E
D
C
B
A



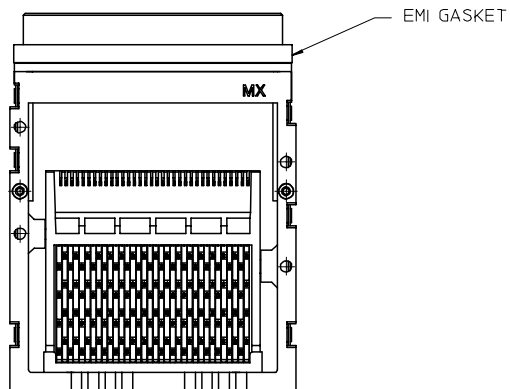
SECTION A-A



NOTES :

- MATERIALS :
CONNECTOR HOUSING - HIGH TEMP THERMOPLASTIC, GLASS FILLED, UL94V-0
EMI HOUSING - NICKEL PLATED DIE CAST ALLOY
COVER - STAINLESS STEEL ALLOY
EMI GASKET - CONDUCTIVE POLYMER
- PLATING OPTIONS :
(1) CONTACT AREA - 0.38µm MIN GOLD OVER 2.54 µm MIN NICKEL
COMPLIANT TAIL AREA - 0.76 - 1.52 µm TIN/LEAD (90/10) OVER 2.54 µm MIN NICKEL.
(2) CONTACT AREA - 0.76µm MIN GOLD OVER 2.54 µm MIN NICKEL
COMPLIANT TAIL AREA - 0.76 - 1.52 µm TIN/LEAD (90/10) OVER 2.54 µm MIN NICKEL.
- PRODUCT SPECIFICATION : PS-75581-001
- THIS CONNECTOR IS DESIGNED TO MATE WITH MOLEX CABLE SERIES 74546.
- PACKAGING SPECIFICATION : TRAY PACK PER PK-75581-001
- MOUNTING HARDWARE REQ'D : M2x8mm CAP SCREWS (4)

PART NUMBER	PLATING OPTION
75581 0001	(1) 0.38µ Gold (SEE NOTE #2)
75581 0002	(2) 0.76µ Gold (SEE NOTE #2)



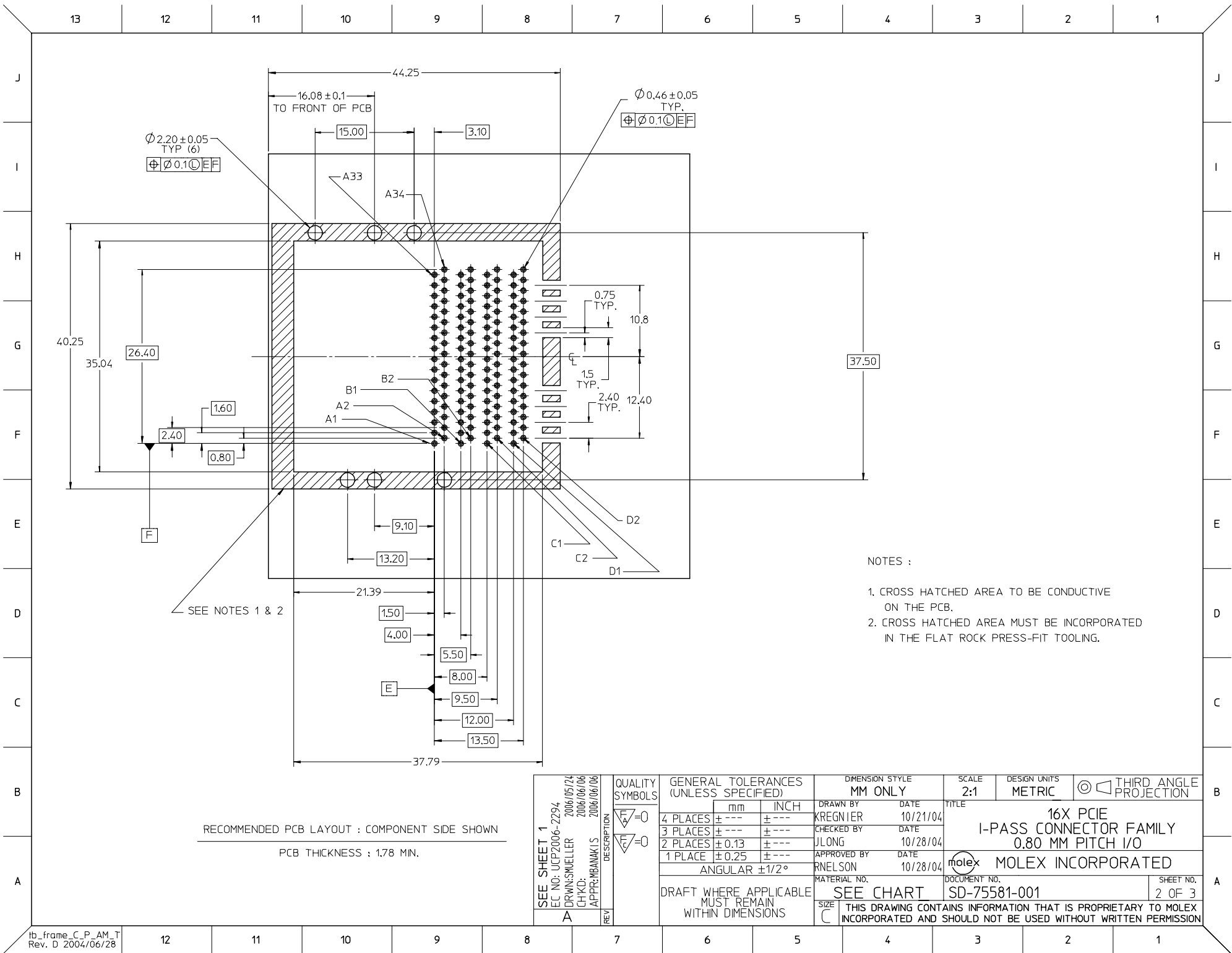
PRODUCT RELEASE FC NO: UCP2006-2294 DRAWN: SIKELLER 2006/05/24 CHKD: 2006/06/06 APPR: MBAAKIS 2006/06/06	QUALITY SYMBOLS 	GENERAL TOLERANCES (UNLESS SPECIFIED)		DIMENSION STYLE MM ONLY		SCALE 2:1	DESIGN UNITS METRIC	THIRD ANGLE PROJECTION	
		4 PLACES ± --- ± ---	mm INCH	DRAWN BY KREGNIER	DATE 10/21/04	TITLE 16X PCIE I-PASS CONNECTOR FAMILY 0.80 MM PITCH I/O			
		3 PLACES ± --- ± ---		CHECKED BY JLONG	DATE 10/28/04	MOLEX INCORPORATED			
		2 PLACES ± 0.13 ± --- 1 PLACE ± 0.25 ± --- ANGULAR ±1/2°		APPROVED BY RNELSON	DATE 10/28/04	MATERIAL NO. SEE CHART	DOCUMENT NO. SD-75581-001	SHEET NO. 1 OF 3	

DRAFT WHERE APPLICABLE
MUST REMAIN
WITHIN DIMENSIONS

SIZE C

THIS DRAWING CONTAINS INFORMATION THAT IS PROPRIETARY TO MOLEX INCORPORATED AND SHOULD NOT BE USED WITHOUT WRITTEN PERMISSION

12 11 10 9 8 7 6 5 4 3 2 1



$\varnothing 2.20 \pm 0.05$
TYP (6)
 $\oplus \varnothing 0.1 \text{ (EF)}$

$\varnothing 0.46 \pm 0.05$
TYP.
 $\oplus \varnothing 0.1 \text{ (EF)}$

SEE NOTES 1 & 2

- NOTES :
- CROSS HATCHED AREA TO BE CONDUCTIVE ON THE PCB.
 - CROSS HATCHED AREA MUST BE INCORPORATED IN THE FLAT ROCK PRESS-FIT TOOLING.

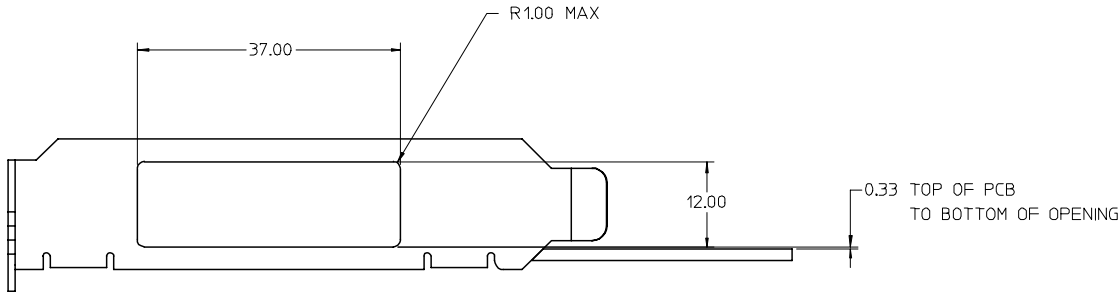
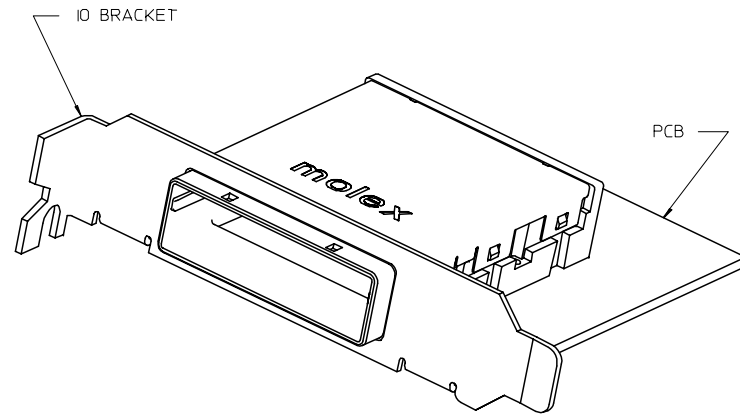
RECOMMENDED PCB LAYOUT : COMPONENT SIDE SHOWN
PCB THICKNESS : 1.78 MM.

SEE SHEET 1 FC NO: UCP2006-2294 DRAWN: SWEILER 2006/05/24 CHKD: 2006/06/06 APPR: MBAMAKIS 2006/06/06 REVISIONS:	QUALITY SYMBOLS	GENERAL TOLERANCES (UNLESS SPECIFIED)	DIMENSION STYLE	SCALE	DESIGN UNITS	THIRD ANGLE PROJECTION	
		mm INCH	MM ONLY	2:1	METRIC		
	$\nabla = 0$	4 PLACES ± --- ± ---	DRAWN BY DATE	TITLE			
	$\nabla = 0$	3 PLACES ± --- ± ---	KREGNIER 10/21/04	16X PCIe I-PASS CONNECTOR FAMILY			
	2 PLACES ± 0.13 ± ---	CHECKED BY DATE	0.80 MM PITCH I/O				
	1 PLACE ± 0.25 ± ---	JLONG 10/28/04	MOLEX INCORPORATED				
	ANGULAR ± 1/2°	APPROVED BY DATE	DOCUMENT NO.				
		RNELSON 10/28/04	SD-75581-001				
		MATERIAL NO.	SHEET NO.				
			2 OF 3				
		DRAFT WHERE APPLICABLE MUST REMAIN WITHIN DIMENSIONS	THIS DRAWING CONTAINS INFORMATION THAT IS PROPRIETARY TO MOLEX INCORPORATED AND SHOULD NOT BE USED WITHOUT WRITTEN PERMISSION				

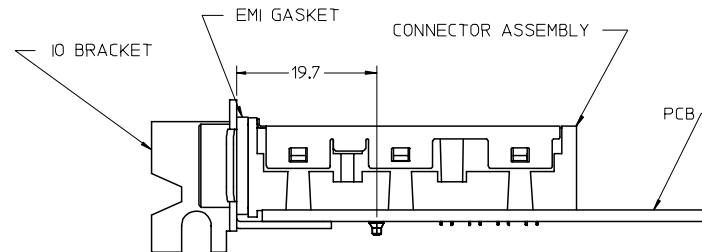
13 12 11 10 9 8 7 6 5 4 3 2 1

J
I
H
G
F
E
D
C
B
A

J
I
H
G
F
E
D
C
B
A



IO BRACKET CUT-OUT
(NOT SUPPLIED)



ASSEMBLED VIEW

SEE SHEET 1 FCC NO: UICP2006-2294 DRAWN: SNIJLLER 2006/05/24 CHKD: 2006/06/06 APPR: MBANAKIS 2006/06/06	QUALITY SYMBOLS ▽=0 ▽=0	GENERAL TOLERANCES (UNLESS SPECIFIED)		DIMENSION STYLE MM ONLY		SCALE 2:1	DESIGN UNITS METRIC	THIRD ANGLE PROJECTION	
		mm	INCH	DRAWN BY	DATE	TITLE			
		4 PLACES ±.005	±.005	KREGNIER	10/21/04	16X PCIE I-PASS CONNECTOR FAMILY			
		3 PLACES ±.005	±.005	CHECKED BY	DATE	0.80 MM PITCH I/O			
2 PLACES ±0.13	±.005	JLONG	10/28/04	MOLEX INCORPORATED					
1 PLACE ±0.25	±.005	APPROVED BY	DATE	MATERIAL NO.		DOCUMENT NO.		SHEET NO.	
ANGULAR ±1/2°		RNELSON	10/28/04	SEE CHART		SD-75581-001		3 OF 3	
DRAFT WHERE APPLICABLE MUST REMAIN WITHIN DIMENSIONS				SIZE C		THIS DRAWING CONTAINS INFORMATION THAT IS PROPRIETARY TO MOLEX INCORPORATED AND SHOULD NOT BE USED WITHOUT WRITTEN PERMISSION			

12 11 10 9 8 7 6 5 4 3 2 1