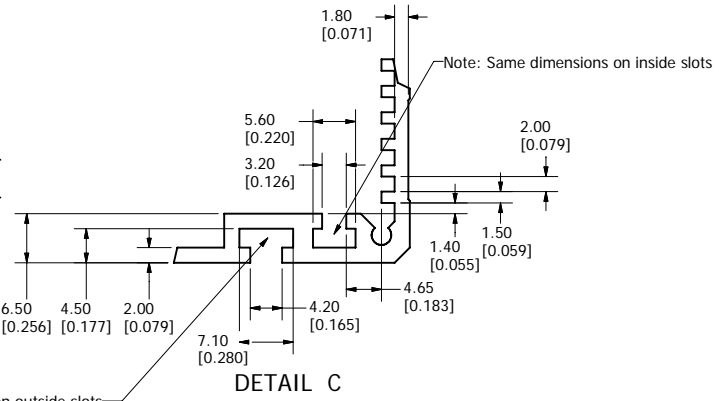
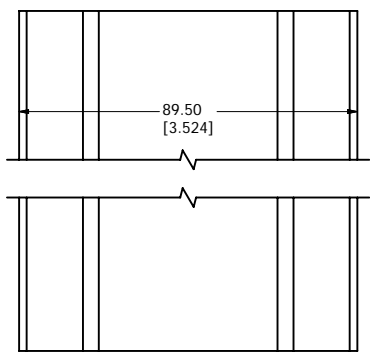
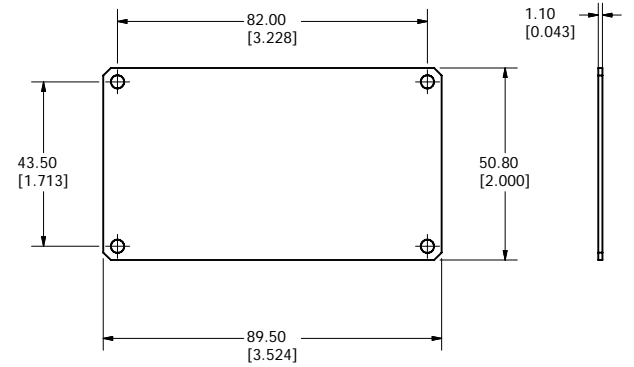


### Slot Details



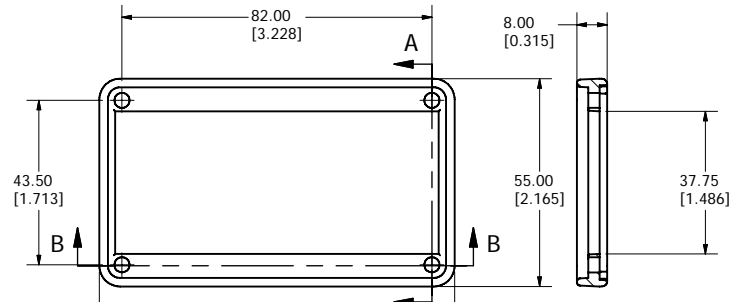
### End Plate



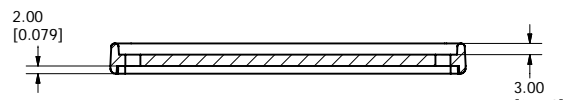
Note: Same dimensions on outside slots

### DETAIL C

### Bezel



### SECTION A-A



### SECTION B-B

**NOTE**  
Purchased assembly includes Extrusion, 2 End Plates, 2 Bezels and 8 screws

PART NUMBERS		
Sink Box		
Material	Colour	Part Number
Aluminum	Black Anodized	431612
6063 T5 Alloy	Clear Anodized	531612
Bezel	Black	
GP ABS		
End Plate	Black Anodized	031623
5052-H32 Alloy	Clear Anodized	131623
Required Torque on Fasteners (no lubrication)		
#4 x 0.5 Screws		30-40 cN*m

# HAMMOND MANUFACTURING™

## 90x150 Sink Box

www.hammondmfg.com