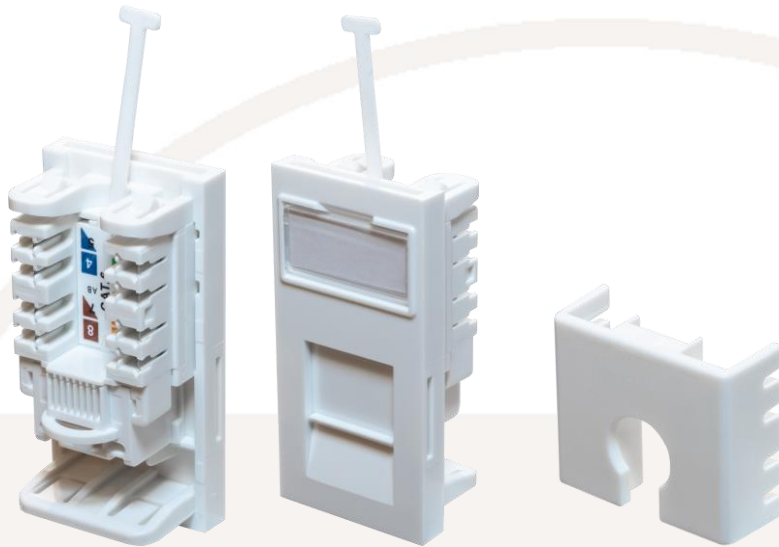


Low Profile Category 6 Euro Outlet



Low Profile Category 6 Euro Outlet (SJKjewh, SJKjewh#24)

This affordable outlet which performs to Category 6 TIA/EIA-568-C.2-1 at permanent link level, can be quickly and easily terminated and fits into most standard faceplates.

Features:

- Performs to Category 6 at permanent link level
- Low profile design, shuttered front aperture protects against dust
- Fitted with industry standard Krone (LSA+) type IDC connections
- Compatible with most 'Euro-style' 86 x 86 faceplates
- 'Slip-in' label facility for port identification
- Integral cable tie point. Cable retention clip also supplied along with additional flexible cable tie facility.
- Available in individual polythene bags or in "bulk packs" of 24 without individual poly bags

Specifications:

- Weight:
SJKjewh: 12g approx.
SJKjewh#24: 288g approx.
- Dimensions (as packed):
SJKjewh: 100 x 40 x 30mm
SJKjewh#24: 260 x 220 x 90mm
- Colour: White (RAL 9003)

- **Materials:**
 - IDC:
 - IDC cap: ABS, UL 94-HB
 - IDC Housing: PC + Glass fibre UL 94V-2
 - IDC Terminal: Tin plated phosphor bronze

RJ45 Jack:
Housing: ABS UL 94-HB
Contact bracket: PC 1250Y, UL 94V-0

RJ45 Jack Contact
Material: Nickel plated phosphor bronze
Finish: 50µ"/1.27 µm gold plating on plug contact area

- T568A and T568B wiring sticker
- Insertion force: 20N max.
- Retention strength: 7.7kg between jack and plug
- Operating temperature: -10°C to 60°C
- Suitable for 22-26 AWG stranded and solid wire with Krone (LSA+) type punch down tool.

Packaging:

SJKjewh: individually bagged, then bagged in 20s then in 100s

SJKjewh#24: in box of 24 pcs, then in outer carton of 24 boxes

Commodity code: 84733020

EAN: SJKjewh: 5055386510501

SJKjewh#24: 5055386510518

Country of Origin: China

