

M12

1200 ... 3...

Actuator/Sensor Cordsets M12



Actuator/sensor cordset with overmolded connector

Cable end 1:

M12 female, straight, A-coded, IP67

Cable end 2:

blunt cut

Cable:

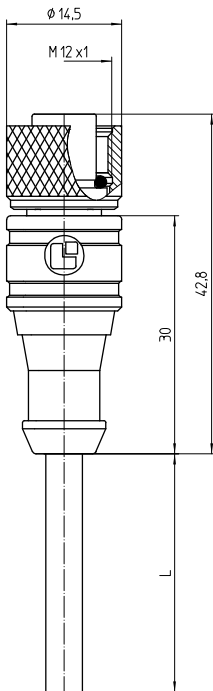
PUR, black

Approvals:



M12

1200 ... 3...



Environmental conditions

Temperature range -25 °C/+80 °C

Materials

Insulating body TPU GF, HB according to UL94
 Contact bush CuZn, pre-nickel and gold-plated
 Overmolding/handle TPU¹
 Knurled nut CuZn, nickel-plated
 Seal FKM

¹ material halogen-free

Mechanical data

Mating cycles ≥ 100
 Insertion force $\leq 10 \text{ N}^1$
 Withdrawal force $\leq 15 \text{ N}^1$
 Protection class IP67²

¹ measured with a proper counterpart

² according to IEC DIN EN 60529, only in locked condition with an appropriate counterpart

Connected cable

Construction PUR, black

Electrical data (at $T_{\text{amb}} 20 \text{ °C}$)

Contact resistance $\leq 10 \text{ m}\Omega$
 Rated current 4 A (3–5 poles)
 2 A (8 poles)
 1.5 A (12 poles)
 ($T_{\text{amb}} 40 \text{ °C}$)
 Rated voltage 250 V AC/DC (3–4 poles)
 60 V AC/DC (5 poles)
 30 V AC/DC (8–12 poles)
 Rated impulse voltage 2500 V (3–4 poles)
 1500 V (5 poles)
 800 V (8–12 poles)
 Material group I (IEC)/0 (UL) (CTI = 600)
 Insulation resistance $> 100 \text{ M}\Omega$

Associated products

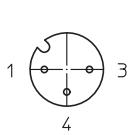
Counterparts

☞ 1210 ... 0... ☞ 1210 ... 3... ☞ 1210 1200 ... 0...
 ☞ 1210 1200 ... 3... ☞ 1210 1205 ... 3... ☞ 1210 1206 ... L1 0...
 ☞ 1210 1206 ... L1 3... ☞ 1210 1206 ... L2 0... ☞ 1210 1206 ... L2 3...
 ☞ 1230 ... T16CW ... ☞ 1230 ... T16CW100 ... ☞ 1230 ... T16CW101 ...

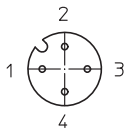
M12

1200 ... 3...

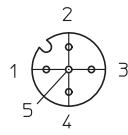
Pin assignments for female M12 connectors, A-coded, front view



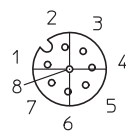
- 3 pole**
1 brown
3 blue
4 black



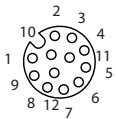
- 4 pole**
1 brown
2 white
3 blue
4 black



- 5 pole**
1 brown
2 white
3 blue
4 black
5 gray



- 8 pole**
1 white
2 brown
3 green
4 yellow
5 gray
6 pink
7 blue
8 red



- 12 pole**
1 white
2 green
3 yellow
4 gray
5 pink
6 red
7 black
8 violet
9 gray/pink
10 red/blue
11 blue
12 brown

☞ 1230 ... T16CW102 ...	☞ 1230 ... T16CW103 ...	☞ 1230 ... T16CW104 ...
☞ 1230 ... T16CW105 ...	☞ 1231 ... T16CW100 ...	☞ 1231 ... T9CP
☞ 1239 ... T0CB	☞ 1250 ... T...CR	☞ 1255 ... T9CR
☞ 5012 04L1	☞ 5012 08L1	☞ 5012 10L1
☞ 5512 04DL1	☞ 5512 04L1	☞ 5512 08L1
Accessories		
☞ 9912 CPF0	☞ 9912 MRBU	☞ 9912 MRGN
☞ 9912 MRRD	☞ 9912 MRWH	☞ 9912 MRYE

M12

1200 ... 3...

Designation	Pole Number	Connected Cable	PU (Pieces)	MDQ (Pieces)	Dimensions L (mm)
1200 04 301 1m	4	PUR, black, 4 x 0.34 mm ² (AWG 22), 910301, UL-style 20549	5	10	1000
1200 04 301 2m	4	PUR, black, 4 x 0.34 mm ² (AWG 22), 910301, UL-style 20549	5	10	2000
1200 04 301 5m	4	PUR, black, 4 x 0.34 mm ² (AWG 22), 910301, UL-style 20549	1	10	5000
1200 08 303 3m	8	PUR, black, 8 x 0.25 mm ² (AWG 24), 910303, UL-style 20549	1	10	3000
1200 12 315 5m	12 cULus pending	PUR, black, 12 x 0.25 mm ² (AWG 24), 910315, UL-style 20549	1	10	5000

Packaging:
in a plastic bag