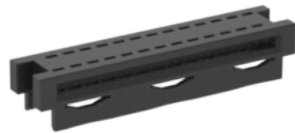


Part-No. 244632-E



SMC Board-on

26-pin, cable guide



Technical Data

Applications	Cable Connectors, PCB Connectors,
Pitch	1.27 mm
No. of Pins	26
Termination	SMT/IDC
Max Operating Temperature	105 °C
Data Rate	3 Gbit/s
Air- and creepage distance	0.4 mm
Mating Cycles	500
Configuration	Cable guide
Packaging	Poly bag 600 pcs

Part-No. 244632-E

SMC Board-on

26-pin, cable guide