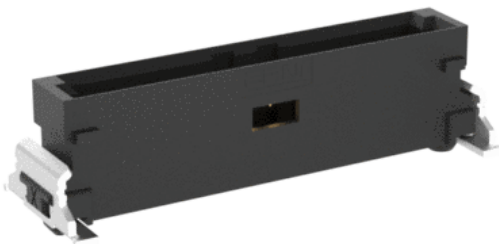


Part-No. 294920-E



MiniBridge Male Connector

12-pin, vertical, SMT



Technical Data

Applications	PCB Connectors, ,
Pitch	1.27 mm
Orientation	Vertical
Gender	Male
No. of Pins	12
Termination	SMT
Color	black
Koshiri Secure	No
Current Rating	3.6 A
Max Operating Temperature	150 °C
Air- and creepage distance	0.4 mm

Mating Cycles	500
Packaging	Tape and reel 650 pcs

Part-No. 294920-E

MiniBridge Male Connector

12-pin, vertical, SMT