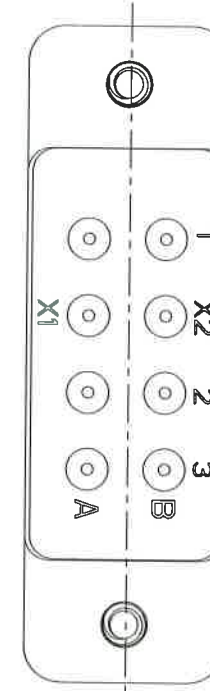
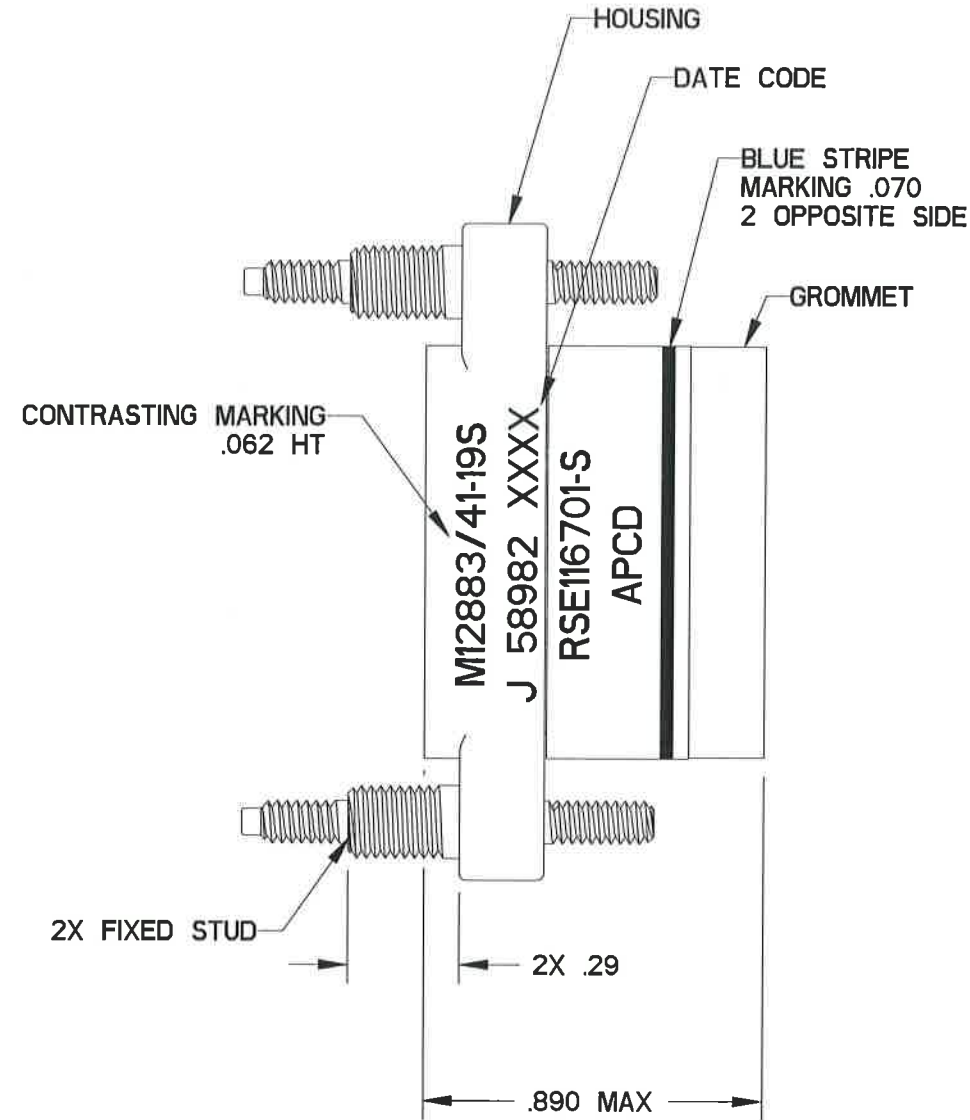
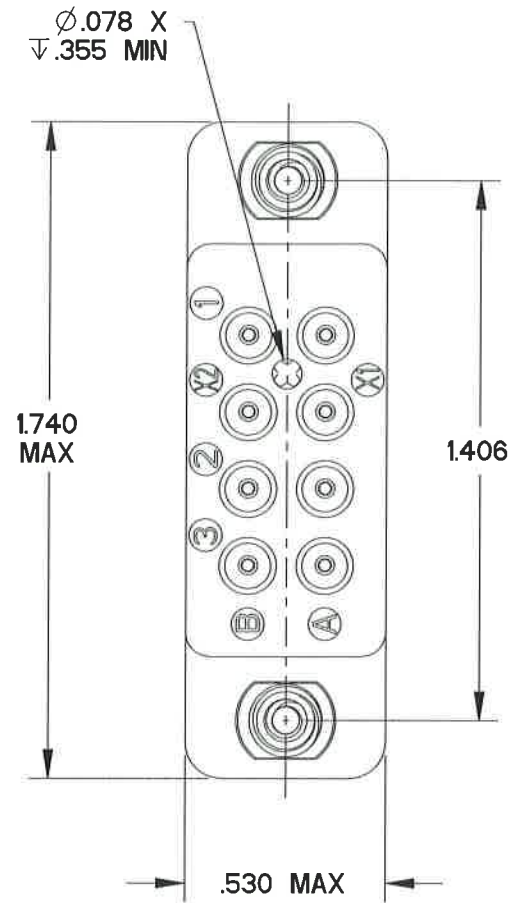


REV	ECN	DESCRIPTION	APP'D
A	2840	GROM HOLES TO SIZE 20	AP 11/11/96
B	7350	REDRAW; UPDATE SUBASSEMBLY P/N	<i>[Signature]</i> 11/12/14



SUBASSEMBLY P/N	RELAY SOCKET P/N		SUPPLIED CONTACTS				MARKING
	MILITARY	APCD	SIZE	MIL P/N	APCD P/N	QTY	
700116701S-IN	M12883/41-19S	RSE116700-S	CONTACTS NOT SUPPLIED				M12883/41-19S J 58982 XXXX RSE116701-S
		RSE116701-S	16/20	M39029/92-534	CNS127900	8	

<b>DIMENSIONS</b> ANSI Y14.5M UNITS: INCHES Pro/E FILE	<b>TOLERANCES</b> .XX ±0.01 .XXX ±0.005 ANGLES ±2.0°	<b>PROJECTION</b> 	<b>Amphenol Pcd</b> ENGR J.PHAN Sept-24-14 CHKD <i>Wilbur Jones</i> 11/18/14 APPD <i>Stalder</i> 11/18/14	<b>TITLE</b> RELAY SOCKET 2-POLE, 10 AMP, FIXED STUDS STAINLESS STEEL HARDWARE
<b>ORIGINAL</b> <i>[Red X]</i> NOT FOR CUSTOMER DISTRIBUTION	THIS DOCUMENT CONTAINS PROPRIETARY INFORMATION WHICH IS THE CONFIDENTIAL PROPERTY OF AMPHENOL PCD, BEVERLY, MA		<b>SIZE</b> B	<b>DWG NO.</b> RSE116700-S
		<b>CODE:</b> 58982	<b>SCALE:</b> 5:3	<b>REV</b> B
		<b>SHEET</b> 1 OF 1		