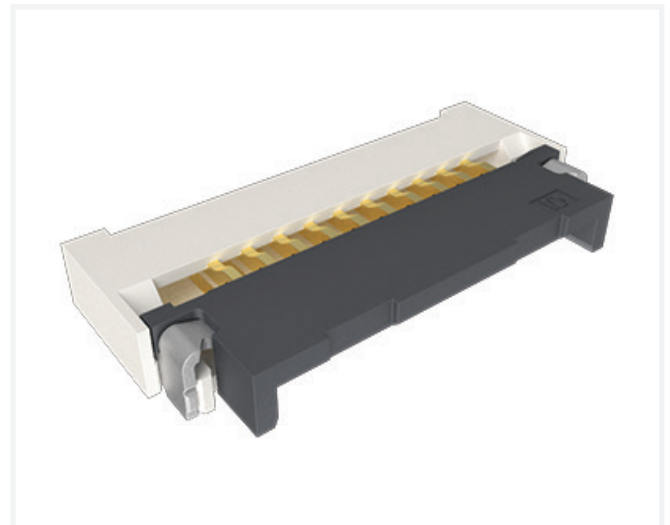


0.50mm Pitch FFC/FPC – F33T Series

RIGHT ANGLE ZIF FLEX CONNECTOR

F33T series is a right angle ZIF flex connector with a front flip lock, surface mount termination, and bottom contact. It features 0.95mm in height and comes in 4 to 40 contacts. This series features a cable thickness of 0.30mm and provide enhanced durability. The connectors come with a small profile but robust design.

- Easy to operate
- Strong FFC/FPC retention force makes it vibration-proof
- Enhanced contact stability
- Ensures high solderability and high durability
- Small profile with 0.95mm height



TARGET MARKETS



FEATURES

- ZIF (Zero Insertion Force) mechanism
- Front flip locking function
- Bottom side contact
- Design against solder and flux wicking
- 4 to 30 positions available
- Lead and halogen-free

BENEFITS

- Absence of frictional mating wear results in high mating cycle life
- Easy to operate and strong FFC/FPC retention makes it vibration-proof
- Ensures enhanced contact stability
- Ensures high solderability
- Comprehensive range to satisfy different customer requirements
- Meets environmental, health and safety requirements

TECHNICAL INFORMATION

MATERIAL

- Housing: LCP, Natural color (UL94V-0)
- Actuator: PA9T, Black color (UL94V-0)
- Contact: Phosphor Bronze, T=0.15mm, 1~3µm Ni under plating
- Anchor-plate: Brass, T=0.20mm, 1~3µm Ni under plating, 2~4µm Tin plating
- Mylar: T=0.10mm, Thermostable, Yellow color

MECHANICAL PERFORMANCE

- FFC/FPC Retention Force: 0.3N/pin
- Terminal Retention Force: 0.8N/terminal min.
- Fixed Plate Retention Force: 0.8N/plate min.
- Durability: 30 mating cycles

ELECTRICAL PERFORMANCE

- Voltage Rating: 50VAC/VDC
- Current Rating: 0.5A
- Contact Resistance: 40mΩ max.
- Insulation Resistance: 500MΩ min.
- Dielectric Withstanding Voltage: No short or breakdown after 250VAC, 2mA, 1min.

APPROVALS AND CERTIFICATIONS

- UL 94V-0
- RoHS compliant

ENVIRONMENTAL

- Operating Temperature Range: -50°C to +85°C

SPECIFICATION

- Aorora Product Specification: IS.EQC.191

PACKAGING

- Tape & Reel

TARGET MARKETS/APPLICATIONS



Car Multimedia
Car Navigation
Dashboard
PND



Base Station
Power
Switches



Notebook
Tablets
Wearables
Gaming
DSC
LCD & PDP TV



Router
Server
ODD
HDD

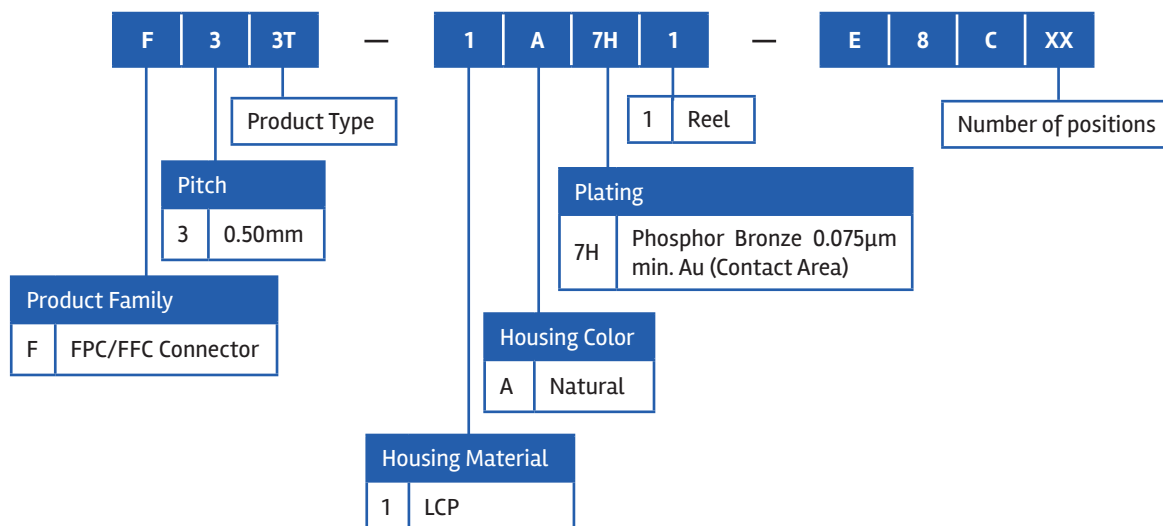


Sensing Element
Monitoring Camera
Human Machine Interface
Industrial PC
Robotics



Ultrasonic
Patient Monitor
MRI
CT
Infusion Pump

PART NUMBER SELECTOR



ARORAFPCF33T0523E44