

MRS-1100A Modular Convection Rework System

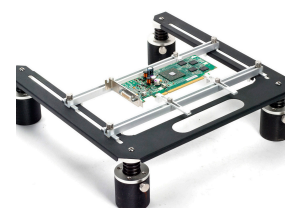


The MRS-1100A Modular Rework System is an integrated convection rework system for the removal and reflow of BGA/CSP and SMT components.

The MRS-1100A is comprised of a hand held convection tool, preheater, adjustable tool holder, and free-standing board holder to create a manually assisted rework system. A series of nozzles, targeting a variety of applications, and optional light magnifier round out the product offering for this system.

With standard features such as programmability, a digital display, program storage of up to 50 profiles, this system is not only versatile, but also easy and efficient to work with. A choice of board holders and accessories are available that make the system capable of handling multiple sizes of PCBs.

The MRS-1100A allows you the choice of using either the embedded profiling capability that can be configured to operate at a fixed temperature, or a four zone programming option. The unit also allows the temperature to be controlled either at the heat output (internal) or at the board (external). The “external” control function uses a thermocouple which can be placed on the board or a component.



Configure the System to your Needs.

The 4 components below can be purchased as a complete system (MRS-1100A) or as separate items.

HCT-1000 Programmable Hand Held Convection Tool

The HCT-1000 System is a fully programmable hand held convection rework tool that can both remove and place SMT components. It features digital controls, internal or external thermocouple feedback control, program storage of up to 50 profiles and integrated vacuum pick-up for component placement and removal. Additionally, with multiple modes of operation including manual, 4 zone heating, and as part of the MRS-1100A System, the HCT-1000 stands out as a versatile convection tool.

The hand-piece features vacuum and reflow buttons allowing the process to be operated manually or automatically through a profile when used as part of the Modular Rework System (MRS). Additionally, the vacuum has automatic lift off of components, at the end of the removal profile, taking guesswork out of the operators' hands and improving process control.

As part of the MRS System, the HCT-1000 is connected via a cable to the PCT-1000, and may be used with ATH-1100A Adjustable Tool Holder. In this mode the HCT-1000 provides timing control for both units and the ATH-1100A allows repeatable place and remove operations.

ATH-1100A Adjustable Tool Holder

The ATH-1100A Adjustable Tool Holder is designed to work with the HCT-1000 or as part of the MRS-1100A System. The tool holder uses the Advanced Head Assembly which features 4" of Z axis adjustment, 1/2" fine adjustment of the X & Y axis as well as 30° θ adjustment. It also features locking hand-piece retainer, Z axis stop and mounting configurations for stand-alone operation or integrated as part of the MRS-1100A. The ATH-1100A is sturdy and easy to attach to the PCT-1000 Programmable Preheater when incorporated into the MRS System.

PCT-1000 Programmable Preheater

The PCT-1000 is a programmable preheater that provides users the ability to increase heat capacity with highly controlled thermal output. The PCT-1000 can be used in a variety of processes including soldering, desoldering, SMD rework operations and, with its added heat capacity, will provide faster production rates while lowering overall process temperatures.

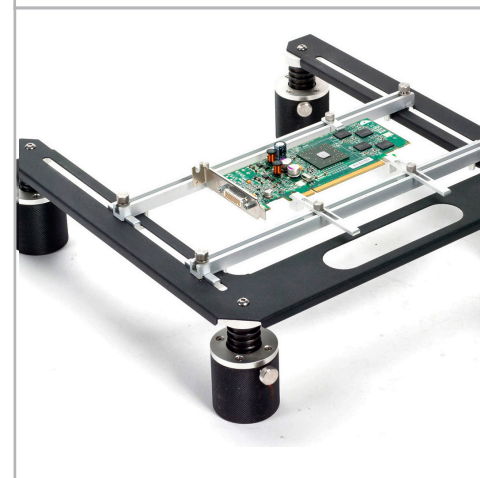
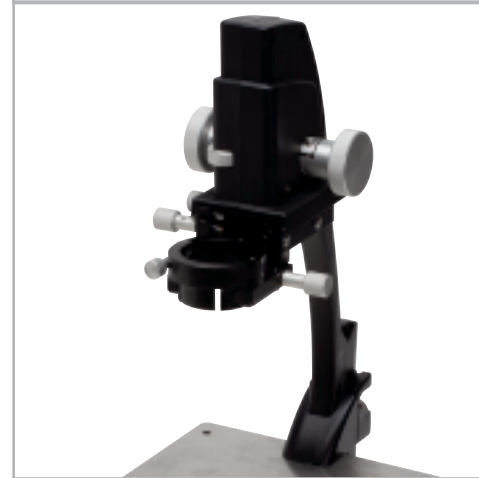
The preheater can be used in two modes; manual for constant heater temperature, and profile for greater control to maintain PCB board temperature with external thermocouple feedback.

With four programmable heating zones and one cooling zone, users select time and temperature targets, creating a preheat thermal profile. The PCT-1000 also has an advanced heater control function where the temperature is controlled either at the heater output (internal) or at the board (external thermocouple).

The PCT-1000 is equipped with an advanced convection heater creating a vortex effect that efficiently directs and concentrates heat.

BH-2000 Board Holder

The BH-2000 is a free-standing board holder that provides a solid and stable base for a variety of PCB's. The unit features easily adjustable rails to accommodate boards 8" (203mm) x 12" (305mm).



MRS-1100A Features

- Digital display for repeatable temperature settings and profile control
- Automatic control of the preheater for simple operation
- Easy profile creation for operator repeatability
- Integrated vacuum pickup for easy component removal
- Hand held or tool holder mounted for operator comfort
- Manual mode for quick setup
- External thermocouple for process setup and verification
- Digital controlled airflow for repeatable results
- X, Y, Z and Theta controls for component alignment
- Adjustable PCB holder for easy change outs
- Automatic vacuum lift off at the end of the cycle
- Password lockout of programmed profiles

MRS-1100A Applications

The MRS-1100A is perfect for removal and reflow of SMT Components. Specific examples of applications include:

- Simple removal and replacement of delicate SMT components.
- Quick, easy and cost effective removal of BGA & CSP that will later be placed with your dedicated Array Package Rework System, this increases the productivity of your rework area and reduces your technicians workload.
- Automatically lifts the component at the end of the cycle preventing operators from prematurely lifting components and damaging expensive PCBs.

ACCESSORIES

Light Magnifier Add-on

The **LM-1000A** Light Magnifier is an integrated light and magnifier. It features a 4x magnification lens and an integrated LED lighting system for shadow free illumination. Supplied with base plate. The LM-1000A includes: LM-1000 Light Magnifier and LM-BP base plate.



LM-1000A

LM-BP

Adjustable Tool Holder Option

The ATH-1100A can be attached to the PCT-1000 or used as a standalone unit thanks to its base plate.

ATH-BASE Optional Base plate for ATH-1100A.



BH-1000

Other Board Holder Options

BH-1000

Post-Rail Board Holder (incl. 4 posts, 2 rails with sliding clips, 4 support pins and flat-head support)

BH-PK1000

Board Holder Pin Kit (incl. 2 discs, 2 long pins, 2 short pins)

BH-PK1000



Nozzles for HCT-1000

A series of 14 Nozzles are available for use with the MRS-1100A / HCT-1000. The nozzles fit applications reworking components of all sizes from (including, but not limited to) BGAs, QFPs, LGAs, PLCC and SOIC. A custom nozzle program is also available.

HCT-NC

Carrier for HN Series Nozzles

Other Accessories for HCT-1000

HCT-FS2

Footswitch, Dual, HCT-1000

HCT-HTRASSY

Heater Assembly

AC-TCK-40-36

Thermocouple 40 AWG, pack of 2

HCT-NC



HN Series Nozzles



HCT-FS2

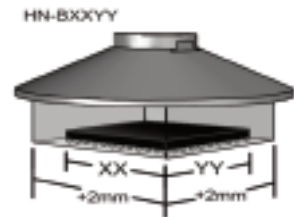
Systems and Nozzles Selection

Part Number	Description
MRS-1100A	Modular Rework System Advanced. <i>Incl.: HCT-1000, PCT-1000, ATH-1100A and BH-2000</i>
HCT-1000	Programmable Hand Held Convection Tool <i>Incl.:</i>
HCT-PS1000	HCT-1000 Power Supply
HCT-HV1	Hand-piece with integral vacuum, cord and connector
HCTA-VC50-5	Vacuum Cup, 3/16" (5.00mm), pack of 5
HCTA-VC64-5	Vacuum Cup, 1/4" (6.4mm), pack of 5
HCTA-VC80-5	Vacuum Cup, 5/16" (8mm), pack of 5
HCTA-VC11-5	Vacuum Cup, 7/16" (11mm), pack of 5
HCTA-TH1	Hand-piece Tool Holder
HNA-1	Nozzle Adapter
HCTA-NW1	Nozzle Wrench
AC-TCK-36-36	Thermocouple 36 AWG, pack of 2
HCTA-CC	Communications Cable 4ft
HN-J0005	5mm Ø nozzle
ATH-1100A	Adjustable Tool Holder, Advanced Head (no base)
PCT-1000	Programmable Preheater <i>Incl.:</i>
AC-TCK-36-36	Thermocouple 36 AWG, pack of 2
PCT-FS1	PCT-1000 Foot Switch
BH-2000	Free Standing Board Holder



Nozzles	Component Dimension*
HN-B0707	7mm X 7mm, CSP, LGA44
HN-B1010	10mm X 10mm, CSP, LGA178, LCC28
HN-B1414	14mm X 14mm
HN-B1408	14mm X 8mm, CSP, SOIC24M
HN-B1515	15mm X 15mm, BGA
HN-B1818	18mm X 18mm, PLCC44,CSP, TQFP100, BGA
HN-B2525	25mm x 25mm, BGA , PLCC68
HN-B1809	18.2mm X 8.5mm,SOJ28, SOIC28M, TSOP32
HN-B2519	24.5mm X 18.5mm, QFP100, QFP80
HN-B2727	27mm X 27mm, BGA
HN-B3232	32mm X 32mm, BGA
HN-B3535	35mm X 35mm, BGA
HN-B4040	40mm X 40mm, BGA
HN-J0005	5mm Ø, DISCRETE

* For the nozzle internal dimension, 2mm have been added to each side to allow for component access.



TECHNICAL SPECIFICATIONS

	PCT-1000	HCT-1000
Size	13" x 8" x 3" (330 x 203 x 76mm)	9" x 7" x 6" (229 x 178 x 152)
Weight	7.5 lbs (3.4kg)	12 lbs. (5.4kg)
Rated Power	1200 W	600 W
Input Voltage	100-240 VAC, 50/60 Hz	100-240 VAC, 50/60 Hz
Storage Temperature	0°C to 50°C (32°F to 122°F)	0°C to 50°C (32°F to 122°F)
Air Flow	19 cfm	5-25 l/minute
Vacuum Pump		15" Hg (381mm Hg)
Noise Level		<55 dB
Source Temperature Range	25°C to 400°C (77°F to 752°F)	Up to 450°C (840°F)
Operational Modes	Setup, Run, Manual, Active Setup	
Display	LCD 20 x 4 display segments	
Number of Programs	50 memory locations	
Number of Zones	5 (4 Heat Zones, 1 Cool Down Zone)	

	LM-1000A	BH-2000
Magnification	4x	Maximum board size
Lighting	8 LEDs, white	Maximum thickness
Power	24V DC	
Lens Size	90mm diameter	