

## har-flex Power F str 2P SMT PL1 280pcs

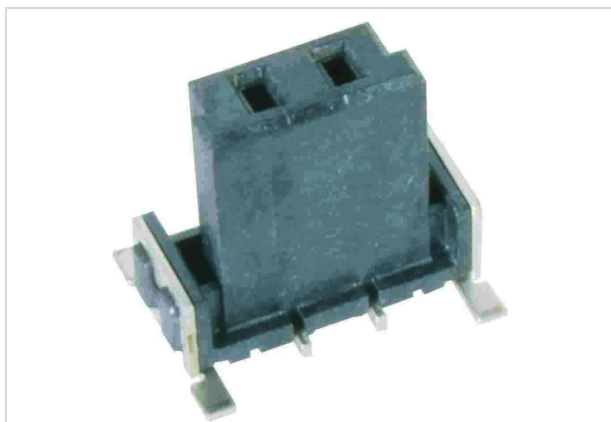


Image is for illustration purposes only. Please refer to product description.

Part number	15 62 002 2601 000
Specification	har-flex Power F str 2P SMT PL1 280pcs
HARTING eCatalogue	<a href="https://b2b.harting.com/15620022601000">https://b2b.harting.com/15620022601000</a>

### Version

Termination method	Reflow soldering termination (SMT)
Connection type	Motherboard to daughtercard Mezzanine
Number of contacts	2
Details	According to IEC 61984, it is an unencapsulated connector. Protection against electric shock must be ensured by the type of installation by the user.
Pack contents	280 pieces on reel

### Technical characteristics

Contact spacing (termination side)	2.54 mm
Contact spacing (mating side)	2.54 mm
Stacking height	9.05 mm
Rated current	25 A
Rated voltage	180 V
Rated voltage	acc. to IEC 60664-1
Rated impulse voltage	1.5 kV
Pollution degree	2
Clearance distance	≥1.74 mm
Creepage distance	≥1.74 mm PCB ≥1.89 mm Connector
Insulation resistance	>10 <sup>10</sup> Ω
Contact resistance	≤25 mΩ
Limiting temperature	-55 ... +125 °C
Performance level	1



Pushing Performance  
Since 1945

## Technical characteristics

Mating cycles	≥500
Test voltage $U_{r.m.s.}$	1.39 kV
Isolation group	IIIa ( $175 \leq CTI < 400$ )
Moisture Sensitivity Level (MSL)	1 acc. to ECA/IPC/JEDEC J-STD-020D
Process Sensitivity Level (PSL)	R0 acc. to ECA/IPC/JEDEC J-STD-020D
Coplanarity of contacts	0.1 mm

## Material properties

Material (insert)	Liquid crystal polymer (LCP)
Colour (insert)	Black
Material (contacts)	Copper alloy
Surface (contacts)	Noble metal over Ni Mating side Sn over Ni Termination side
Material flammability class acc. to UL 94	V-0
RoHS	compliant
ELV status	compliant
China RoHS	e
REACH Annex XVII substances	Not contained
REACH ANNEX XIV substances	Not contained
REACH SVHC substances	Not contained
California Proposition 65 substances	Not contained

## Commercial data

Packaging size	1
Country of origin	China
European customs tariff number	85366990
GTIN	5713140204348
eCl@ss	27460201 PCB connector (board connector)