



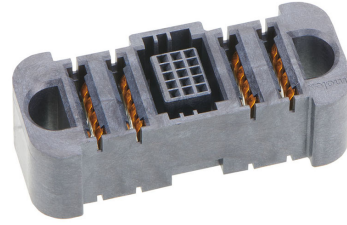
Part Number : [2195630025](#)

Product Description : EXTreme Guardian HD Vertical Receptacle Assembly with Guide Receivers, 5 Power Circuits, 15 Signal Circuits, 5 Power Circuits

Series Number : 219563

Status : Active

Product Category : Board-to-Board Connectors



Documents & Resources

Drawings

[Drawing 2195630025_sd.pdf](#)

3D Models and Design Files

[3D Model PDF 2195630025.pdf](#)

[3D Model 2195630025_stp.zip](#)

Specifications

[Product Specification 2141130000-PS-000.pdf](#)

Product Environment Compliance

Compliance

GADSL/IMDS	Compliant with Exemption 44; 34; 33
China RoHS	
EU ELV	Not Relevant
Low-Halogen Status	Low-Halogen per
REACH SVHC	Not Contained per D(2023)3788-DC (14 Jun 2023)
EU RoHS	Compliant per EU 2015/863

[Multiple Part Product Compliance Statements](#)

- Eu RoHS
- REACH SVHC
- Low-Halogen

[Multiple Part Industry Compliance Documents](#)

- IPC 1752A Class C
- IPC 1752A Class D
- Molex Product Compliance Declaration
- IEC-62474
- chemSHERPA (xml)

EU RoHS Certificate of Compliance

Part Details

General

Status	Active
Category	Board-to-Board Connectors
Series	219563
Description	EXTreme Guardian HD Vertical Receptacle Assembly with Guide Receivers, 5 Power Circuits, 15 Signal Circuits, 5 Power Circuits
Application	Board-to-Board, Power, Signal
Component Type	PCB Receptacle
Product Family	EXTreme Guardian System
Product Name	EXTreme Guardian HD
UPC	196823044373

Agency

CSA	LR19980
UL	E29179

Electrical

Current - Maximum per Contact	130.0A
Voltage - Maximum	125V

Physical

Breakaway	No
Circuits (Loaded)	25
Circuits (maximum)	25
Color - Resin	Black
Durability (mating cycles max)	200

First Mate / Last Break	No
Flammability	94V-0
Glow-Wire Capable	No
Guide to Mating Part	Yes
Keying to Mating Part	None
Lock to Mating Part	No
Mated Height	12.74mm
Material - Metal	High Conductivity Copper
Material - Plating Mating	Gold
Material - Plating Termination	Tin
Material - Resin	Liquid Crystal Polymer
Net Weight	27.785/g
Number of Rows	1, 5
Orientation	Vertical
Packaging Type	Tray
PC Tail Length	2.42mm, 2.83mm
PCB Locator	No
PCB Retention	None
PCB Thickness - Recommended	1.58mm
Pitch - Mating Interface	5.78mm, 2.00mm
Plating min - Mating	0.762µm
Plating min - Termination	2.540µm
Polarized to Mating Part	Yes
Polarized to PCB	Yes
(p)ower-(s)ignal Configuration	5p - 15s - 5p
Temperature Range - Operating	-40° to +125°C, -40° to +105°C
Termination Interface Style	Through Hole - Compliant Pin

Mates With / Use With

Mates with Part(s)

Description	Part Number
EXTreme Guardian HD Right-Angle Plug Assembly with Guide Pins, 5 Power Circuits, 15 Signal Circuits, 5 Power Circuits	<u>2195620025</u>

This document was generated on Sep 06, 2023