



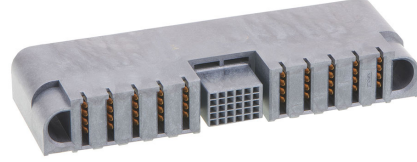
Part Number : [2195640028](#)

Product Description : EXTreme Guardian HD Right-Angle Receptacle Assembly with Guide Receivers, 3 Power Circuits, 30 Signal Circuits, 3 Power Circuits

Series Number : 219564

Status : Active

Product Category : Board-to-Board Connectors



Documents & Resources

Drawings

[Drawing 2195640028_sd.pdf](#)

3D Models and Design Files

[3D Model PDF 2195640028.pdf](#)

[3D Model 2195640028_stp.zip](#)

Specifications

[Product Specification 2141130000-PS-000.pdf](#)

Product Environment Compliance

Compliance

| | |
|--------------------|--|
| GADSL/IMDS | Compliant with Exemption 44; 34; 33 |
| China RoHS | |
| EU ELV | Not Relevant |
| Low-Halogen Status | Low-Halogen per |
| REACH SVHC | Not Contained per D(2023)3788-DC (14 Jun 2023) |
| EU RoHS | Compliant per EU 2015/863 |

[Multiple Part Product Compliance Statements](#)

- Eu RoHS
- REACH SVHC
- Low-Halogen

[Multiple Part Industry Compliance Documents](#)

- IPC 1752A Class C
- IPC 1752A Class D
- Molex Product Compliance Declaration
- IEC-62474
- chemSHERPA (xml)

EU RoHS Certificate of Compliance

Part Details

General

| | |
|----------------|--|
| Status | Active |
| Category | Board-to-Board Connectors |
| Series | 219564 |
| Description | EXTreme Guardian HD Right-Angle Receptacle Assembly with Guide Receivers, 3 Power Circuits, 30 Signal Circuits, 3 Power Circuits |
| Application | Board-to-Board, Power, Signal |
| Component Type | PCB Receptacle |
| Product Family | EXTreme Guardian System |
| Product Name | EXTreme Guardian HD |
| UPC | 196823044717 |

Agency

| | |
|-----|---------|
| CSA | LR19980 |
| UL | E29179 |

Electrical

| | |
|-------------------------------|--------|
| Current - Maximum per Contact | 130.0A |
| Voltage - Maximum | 125V |

Physical

| | |
|--------------------------------|-------|
| Breakaway | No |
| Circuits (Loaded) | 36 |
| Circuits (maximum) | 36 |
| Color - Resin | Black |
| Durability (mating cycles max) | 200 |

| | |
|--------------------------------|--------------------------------|
| First Mate / Last Break | No |
| Flammability | 94V-0 |
| Glow-Wire Capable | No |
| Guide to Mating Part | Yes |
| Keying to Mating Part | None |
| Lock to Mating Part | No |
| Mated Height | 12.74mm |
| Material - Metal | High Conductivity Copper |
| Material - Plating Mating | Gold |
| Material - Plating Termination | Tin |
| Material - Resin | Liquid Crystal Polymer |
| Net Weight | 34.548/g |
| Number of Rows | 1, 5 |
| Orientation | Right Angle |
| Packaging Type | Tray |
| PC Tail Length | 2.50mm, 3.30mm |
| PCB Locator | Yes |
| PCB Retention | Yes |
| PCB Thickness - Recommended | 1.58mm |
| Pitch - Mating Interface | 5.78mm, 2.00mm |
| Plating min - Mating | 0.762µm |
| Plating min - Termination | 2.540µm |
| Polarized to Mating Part | Yes |
| Polarized to PCB | Yes |
| (p)ower-(s)ignal Configuration | 3p - 30s - 3p |
| Temperature Range - Operating | -40° to +125°C, -40° to +105°C |
| Termination Interface Style | Through Hole - Compliant Pin |

Mates With / Use With

Mates with Part(s)

| Description | Part Number |
|---|-------------------|
| EXTreme Guardian HD Right-Angle Plug Assembly with Guide Pins, 3 Power Circuits, 30 Signal Circuits, 3 Power Circuits | <u>2195620028</u> |

This document was generated on Sep 06, 2023