



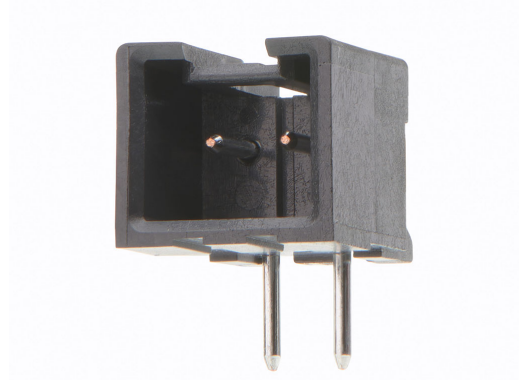
**Part Number :** [534269021](#)

**Product Description :** 2.50mm Pitch, Mini-Lock PCB Header, Single Row, Right-Angle, Through Hole, Tin Plating, Positive Lock, 2 Circuits, Tray, 3.40mm PC Tail Length, Glow-Wire Capable, Black

**Series Number :** 53426

**Status :** Active

**Product Category :** PCB Headers and Receptacles



---

## Documents & Resources

### Drawings

[Drawing 534269021\\_sd.pdf](#)

### Specifications

[Packaging Specification SPK-53426-002-001.pdf](#)

[Product Specification 511630000-PS-000.pdf](#)

---

## Product Environment Compliance

### Compliance

GADSL/IMDS	Not Relevant
China RoHS	
EU ELV	Not Relevant
Low-Halogen Status	Not Low-Halogen per IEC 61249-2-21
REACH SVHC	Not Contained per D(2023)3788-DC (14 Jun 2023)
EU RoHS	Compliant per EU 2015/863

### [Multiple Part Product Compliance Statements](#)

- Eu RoHS
- REACH SVHC
- Low-Halogen

### [Multiple Part Industry Compliance Documents](#)

- IPC 1752A Class C
- IPC 1752A Class D

- Molex Product Compliance Declaration
- IEC-62474
- chemSHERPA (xml)

EU RoHS Certificate of Compliance

---

## Part Details

### General

Status	Active
Category	PCB Headers and Receptacles
Series	53426
Description	2.50mm Pitch, Mini-Lock PCB Header, Single Row, Right-Angle, Through Hole, Tin Plating, Positive Lock, 2 Circuits, Tray, 3.40mm PC Tail Length, Glow-Wire Capable, Black
Application	Signal, Wire-to-Board
Component Type	PCB Header
Product Family	Mini-Lock Wire-to-Board Connector System
Product Name	Mini-Lock
UPC	196823332562

### Agency

UL	E29179
----	--------

### Electrical

Current - Maximum per Contact	3.0A
Voltage - Maximum	250V AC (RMS)/DC

### Physical

Breakaway	No
Circuits (Loaded)	2
Circuits (maximum)	2
Color - Resin	Black
Durability (mating cycles max)	30
Glow-Wire Capable	Yes

Keying to Mating Part	None
Lock to Mating Part	Yes
Material - Metal	Phosphor Bronze
Material - Plating Mating	Tin
Material - Plating Termination	Tin
Material - Resin	Polyamide
Net Weight	382.360/mg
Number of Rows	1
Orientation	Right Angle
Packaging Type	Tray
PC Tail Length	3.40mm
PCB Locator	No
PCB Retention	Yes
PCB Thickness - Recommended	1.60mm
Pitch - Mating Interface	2.50mm
Polarized to Mating Part	Yes
Polarized to PCB	No
Shrouded	Fully
Stackable	No
Temperature Range - Operating	-55° to +105°C
Termination Interface Style	Through Hole

---

## Mates With / Use With

### Mates with Part(s)

Description	Part Number
Mini-Lock Single Row Receptacle Housings	<u>51163</u>
Mini-Lock-to-Mini-Lock Off-the-Shelf (OTS) Cable Assemblies	<u>15137</u>