



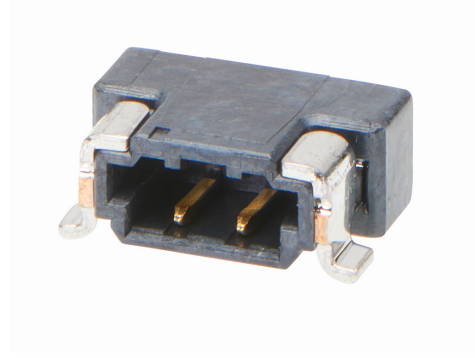
Part Number : [2147210021](#)

Product Description : Zero-Hachi Header, 0.80mm Pitch, Single Row, Right-Angle, Surface Mount, Gold (Au) Plating, Friction Lock, 2 Circuits, Tape and Reel

Series Number : 214721

Status : Active

Product Category : PCB Headers and Receptacles



Documents & Resources

Drawings

[Drawing 2147210021_sd.pdf](#)

3D Models and Design Files

[2D Drawing DXF 2147210021.dxf](#)

[2D Drawing DXF \(PDF\) 2147210021.pdf](#)

[3D Model 2147210021_stp.zip](#)

Product Environment Compliance

Compliance

GADSL/IMDS	Not Relevant
China RoHS	
EU ELV	Compliant per 2000/53/EC
Low-Halogen Status	Low-Halogen per IEC 61249-2-21
REACH SVHC	Not Contained per D(2023)3788-DC (14 Jun 2023)
EU RoHS	Compliant per EU 2015/863

Multiple Part Product Compliance Statements

- Eu RoHS
- REACH SVHC
- Low-Halogen

Multiple Part Industry Compliance Documents

- IPC 1752A Class C
- IPC 1752A Class D
- Molex Product Compliance Declaration

- IEC-62474

- chemSHERPA (xml)

EU RoHS Certificate of Compliance

Part Details

General

Status	Active
Category	PCB Headers and Receptacles
Series	214721
Description	Zero-Hachi Header, 0.80mm Pitch, Single Row, Right-Angle, Surface Mount, Gold (Au) Plating, Friction Lock, 2 Circuits, Tape and Reel
Application	Signal, Wire-to-Board
Component Type	PCB Header
Product Family	Zero-Hachi Connector System
Product Name	Zero-Hachi
UPC	196823391033

Agency

UL	E29179
----	--------

Electrical

Current - Maximum per Contact	2.5A
Voltage - Maximum	30V AC (RMS)/DC

Physical

Breakaway	No
Circuits (Loaded)	2
Circuits (maximum)	2
Color - Resin	Black
Durability (mating cycles max)	20
First Mate / Last Break	No
Glow-Wire Capable	No
Guide to Mating Part	No
Keying to Mating Part	None

Lock to Mating Part	Yes
Material - Metal	Copper Alloy
Material - Plating Mating	Gold
Material - Plating Termination	Matte Tin
Material - Resin	Liquid Crystal Polymer
Net Weight	25.630/mg
Number of Rows	1
Orientation	Right Angle
Packaging Type	Embossed Tape on Reel
PCB Locator	No
PCB Retention	Yes
Pitch - Mating Interface	0.80mm
Pitch - Termination Interface	0.80mm
Plating min - Mating	1.000µm
Polarized to Mating Part	Yes
Polarized to PCB	Yes
Robotic Placement	Vacuum Pick-Up Area
Shrouded	Yes
Temperature Range - Operating	-40° to +85°C
Termination Interface Style	Surface Mount
Unmated Height	1.60mm

Mates With / Use With

Mates with Part(s)

Description	Part Number
Zero-Hachi Single Row Receptacle Housings	<u>214719</u>