



Part Number : [936010121](#)

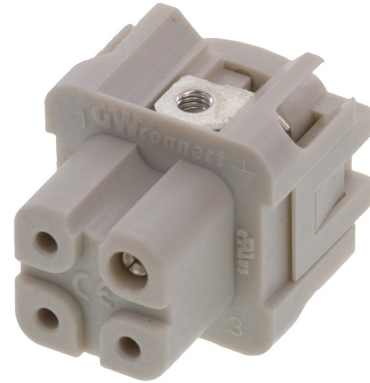
Product Description : GWconnect Screw Terminal Insert, Female, 3-Pole, 10A, without Wire Protection, Silver (Ag) Plated Contacts, Size 3A «21x21», Grey

Series Number : 93601

Status : Active


Product Category : Heavy-Duty Connectors

Engineering Number : 7203.6001.0



Product Environment Compliance

Compliance

GADSL/IMDS	Not Relevant
China RoHS	
EU ELV	Not Relevant
Low-Halogen Status	Low-Halogen per IEC 61249-2-21
REACH SVHC	Contains Lead per D(2023)3788-DC (14 Jun 2023)
EU RoHS	Compliant with Exemption 6(c) per EU 2015/863

Multiple Part Product Compliance Statements

- Eu RoHS
- REACH SVHC
- Low-Halogen

Multiple Part Industry Compliance Documents

- IPC 1752A Class C
- IPC 1752A Class D
- Molex Product Compliance Declaration
- IEC-62474
- chemSHERPA (xml)

EU RoHS Certificate of Compliance

Part Details

General

Status	Active
Category	Heavy-Duty Connectors
Series	93601
Description	GWconnect Screw Terminal Insert, Female, 3-Pole, 10A, without Wire Protection, Silver (Ag) Plated Contacts, Size 3A «21x21», Grey
Component Type	Inserts - Screw Terminal
Insert Series	S-A3/4
Product Family	GWconnect Heavy Duty Connectors (HDC)
Product Name	GWconnect
Standard	CSA C22.2 NO. 182.3, EN 60664-1, EN 61984, UL 1977
UPC	887191871394

Agency

CSA	256883
UL	E249674

Electrical

Current - Maximum per Contact	10.0A
Voltage - Maximum	230V / 400V
Wire Protection	No

Physical

Component Size	3A «21x21»
Durability (mating cycles max)	500
Gender	Female
Insert Color	Grey
Material - Contact	Copper Alloy
Material - Insert	Polycarbonate
Material - Plating	Silver
Net Weight	12.200/g
Number of Rows	2

Packaging Type	Bag
Polarized to Mating Part	Yes
Poles	3
Stripping Length	6.00mm
Temperature Range - Operating	-40° to +125°C
Tightening Test Torque	0.25 Nm
Wire Size (AWG)	14-20
Wire Size mm ²	0.50-2.50

Mates With / Use With

Mates with Part(s)

Description	Part Number
GWconnect Screw Terminal Insert, Male, 3-Pole, 10A, without Wire Protection, Silver (Ag) Plated Contacts, Size 3A «21x21», Grey	<u>0936010125</u>

Use with Part(s)

Description	Part Number
Use With	Size 3A «21x21» Hoods and Housings