



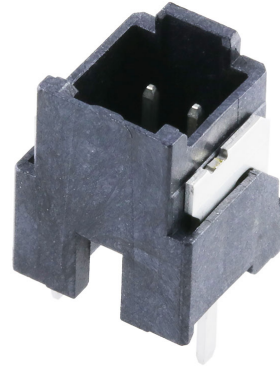
Part Number : [2200291025](#)

Product Description : Micro-One Wire-to-Board Header, Vertical, 2.00mm Pitch, Single Row, Glow-Wire Capable, Through Hole, 2 Circuits, Tin-Bismuth Plating, Black, with Potting Capability

Series Number : 220029

Status : Active

Product Category : PCB Headers and Receptacles



Documents & Resources

Drawings

[Drawing 2200291025_sd.pdf](#)

3D Models and Design Files

[2D Drawing DXF 2200291025.dxf](#)

[2D Drawing DXF \(PDF\) 2200291025.pdf](#)

[3D Model 2200291025_stp.zip](#)

Specifications

[Application Specification 2059790000-AS-000.pdf](#)

[Packaging Specification 2200299200-SPK-200.pdf](#)

[Product Specification 2059790000-PS-000.pdf](#)

Product Environment Compliance

Compliance

GADSL/IMDS	Not Relevant
China RoHS	
EU ELV	Not Relevant
Low-Halogen Status	Low-Halogen per IEC 61249-2-21
REACH SVHC	Not Contained per D(2023)3788-DC (14 Jun 2023)
EU RoHS	Compliant per EU 2015/863

[Multiple Part Product Compliance Statements](#)

- Eu RoHS
- REACH SVHC

- Low-Halogen

Multiple Part Industry Compliance Documents

- IPC 1752A Class C
- IPC 1752A Class D
- Molex Product Compliance Declaration
- IEC-62474
- chemSHERPA (xml)

EU RoHS Certificate of Compliance

Part Details

General

Status	Active
Category	PCB Headers and Receptacles
Series	220029
Description	Micro-One Wire-to-Board Header, Vertical, 2.00mm Pitch, Single Row, Glow-Wire Capable, Through Hole, 2 Circuits, Tin-Bismuth Plating, Black, with Potting Capability
Application	Signal, Wire-to-Board
Component Type	PCB Header
Product Family	Micro-One Wire-to-Board Connector System
Product Name	Micro-One
UPC	196823228780

Electrical

Current - Maximum per Contact	4.0A
Voltage - Maximum	250V AC (RMS)/DC

Physical

Breakaway	No
Circuits (Loaded)	2
Circuits (maximum)	2
Color - Resin	Black
Durability (mating cycles max)	30
First Mate / Last Break	No

Glow-Wire Capable	Yes
Lock to Mating Part	Yes
Material - Metal	Brass
Material - Plating Mating	Tin-Bismuth
Material - Resin	Liquid Crystal Polymer
Net Weight	689.200/mg
Number of Rows	1
Orientation	Vertical
Packaging Type	Tray
PC Tail Length	2.90mm
PCB Retention	Yes
Pitch - Mating Interface	2.00mm
Polarized to PCB	Yes
Shrouded	Fully
Temperature Range - Operating	-40° to +105°C
Termination Interface Style	Through Hole

Mates With / Use With

Mates with Part(s)

Description	Part Number
Micro-One Wire-to-Board Receptacle Housings	<u>205979</u>
Micro-One Single Row Receptacle Housings	<u>212724</u>