



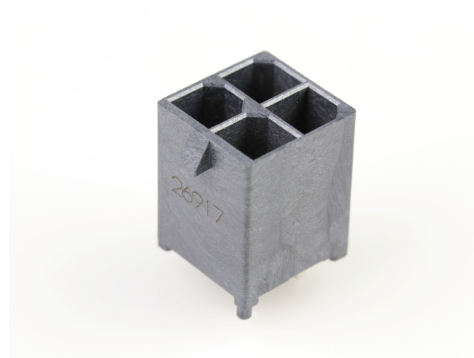
Part Number : [1720650204](#)

Product Description : Mega-Fit Slim Vertical Header, Through Hole, 5.70mm Pitch, Dual Row, 4 Circuits, 0.38µm Gold (Au) Plating, Glow-Wire Capable, Black

Series Number : 172065

Status : Active

Product Category : PCB Headers and Receptacles



Documents & Resources

Drawings

[Drawing 1720650204_sd.pdf](#)

[Packaging Design Drawing 768291100-000.pdf](#)

3D Models and Design Files

[3D Model 1720650204_stp.zip](#)

Specifications

[Application Specification 768232000-AS-000.pdf](#)

[Application Specification AS-76823-100-001.pdf](#)


[Product Specification PS-76823-100-001.pdf](#)

[Test Summary 1720631000-TS-000.pdf](#)

[Test Summary TS-76823-100-001.pdf](#)

Product Environment Compliance

Compliance

GADSL/IMDS	Not Relevant
China RoHS	
EU ELV	Not Relevant
Low-Halogen Status	Low-Halogen per IEC 61249-2-21
REACH SVHC	Not Contained per D(2023)3788-DC (14 Jun 2023)
EU RoHS	Compliant per EU 2015/863

[Multiple Part Product Compliance Statements](#)

- Eu RoHS

- REACH SVHC

- Low-Halogen

Multiple Part Industry Compliance Documents

- IPC 1752A Class C
- IPC 1752A Class D
- Molex Product Compliance Declaration
- IEC-62474
- chemSHERPA (xml)

EU RoHS Certificate of Compliance

Part Details

General

Status	Active
Category	PCB Headers and Receptacles
Series	172065
Description	Mega-Fit Slim Vertical Header, Through Hole, 5.70mm Pitch, Dual Row, 4 Circuits, 0.38µm Gold (Au) Plating, Glow-Wire Capable, Black
Application	Power, Wire-to-Board
Component Type	PCB Header
Product Family	Mega-Fit Power Connectors
Product Name	Mega-Fit
UPC	889056897129

Agency

UL	E29179
----	--------

Electrical

Current - Maximum per Contact	23.5A
Voltage - Maximum	600V AC (RMS)/DC

Physical

Breakaway	No
Circuits (Loaded)	4
Circuits (maximum)	4
Color - Resin	Black

Durability (mating cycles max)	200
First Mate / Last Break	No
Flammability	94V-0
Glow-Wire Capable	Yes
Keying to Mating Part	Yes
Lock to Mating Part	Yes
Mated Height	16.78mm
Material - Metal	High Conductivity Copper
Material - Plating Mating	Gold
Material - Plating Termination	Matte Tin
Material - Resin	Liquid Crystal Polymer
Net Weight	2.394/g
Number of Rows	2
Orientation	Vertical
Packaging Type	Tray
PC Tail Length	3.73mm
PCB Locator	Yes
PCB Retention	Yes
PCB Thickness - Recommended	1.58mm
Pitch - Mating Interface	5.70mm
Pitch - Termination Interface	5.70mm
Plating min - Mating	0.381µm
Plating min - Termination	2.540µm
Polarized to Mating Part	Yes
Polarized to PCB	Yes
Shrouded	Yes
Temperature Range - Operating	-40° to +120°C
Termination Interface Style	Through Hole
Unmated Height	14.80mm

Mates With / Use With

Mates with Part(s)

Description	Part Number
-------------	-------------

Mega-Fit Dual Row Receptacle Housings	<u>170001</u>
Mega-Fit Dual Row Receptacle Housings	<u>171692</u>
Mega-Fit-to-Mega-Fit Off-the-Shelf (OTS) Overmolded Cable Assemblies	<u>245136</u>

This document was generated on Nov 06, 2023