



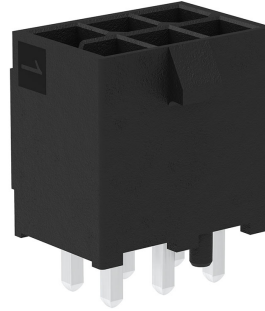
**Part Number :** [2125201004](#)

**Product Description :** Mini-Fit Max Vertical Header, Dual Row, 4 Circuits, Tin (Sn) Plating, Black, Glow-Wire Capable

**Series Number :** 212520

**Status :** Active

**Product Category :** PCB Headers and Receptacles



---

## Documents & Resources

### Drawings

[Drawing 2125201004\\_sd.pdf](#)

[Packaging Design Drawing 2125200001-PK-000.pdf](#)

### 3D Models and Design Files

[3D Model 2125201004\\_stp.zip](#)

### Specifications

[Application Specification 1722990000-AS-000.pdf](#)

[Product Specification 2125150000-PS-000.pdf](#)

[Test Summary 2125150000-TS-000.pdf](#)

---

## Product Environment Compliance

### Compliance

GADSL/IMDS	Not Relevant
China RoHS	
EU ELV	Not Relevant
Low-Halogen Status	Low-Halogen per IEC 61249-2-21
REACH SVHC	Not Contained per D(2023)3788-DC (14 Jun 2023)
EU RoHS	Compliant per EU 2015/863

### [Multiple Part Product Compliance Statements](#)

- Eu RoHS
- REACH SVHC
- Low-Halogen

### [Multiple Part Industry Compliance Documents](#)

- IPC 1752A Class C
- IPC 1752A Class D
- Molex Product Compliance Declaration
- IEC-62474
- chemSHERPA (xml)

EU RoHS Certificate of Compliance

---

## Part Details

### General

Status	Active
Category	PCB Headers and Receptacles
Series	212520
Description	Mini-Fit Max Vertical Header, Dual Row, 4 Circuits, Tin (Sn) Plating, Black, Glow-Wire Capable
Application	Power, Wire-to-Board
Component Type	PCB Header
Product Family	Mini-Fit Family Power Connectors
Product Name	Mini-Fit Max
UPC	193264595518

### Electrical

Current - Maximum per Contact	20.0A
Voltage - Maximum	600V AC (RMS)/DC

### Physical

Breakaway	No
Circuits (Loaded)	4
Circuits (maximum)	4
Color - Resin	Black
Durability (mating cycles max)	30
First Mate / Last Break	No
Glow-Wire Capable	Yes
Guide to Mating Part	No
Keying to Mating Part	Yes
Lock to Mating Part	Yes

Material - Metal	Copper Alloy
Material - Plating Mating	Tin
Material - Resin	Liquid Crystal Polymer
Net Weight	1.780/g
Number of Rows	2
Orientation	Vertical
Packaging Type	Tray
PCB Locator	Yes
PCB Retention	Yes
PCB Thickness - Recommended	1.60mm
Pitch - Mating Interface	4.20mm
Pitch - Termination Interface	4.20mm
Polarized to Mating Part	Yes
Polarized to PCB	Yes
Shrouded	Fully
Temperature Range - Operating	-40° to +105°C
Termination Interface Style	Through Hole

---

## Mates With / Use With

### Mates with Part(s)

Description	Part Number
Mini-Fit Max Dual Row Receptacle Housings	<u>212514</u>