



Part Number : [39289128](#)

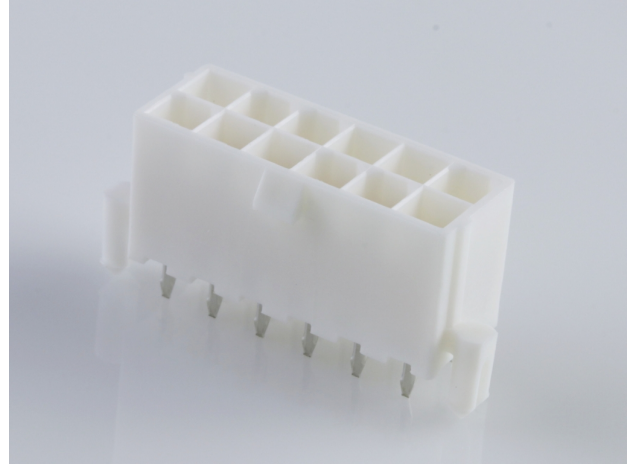
Product Description : Mini-Fit Jr. Vertical Header, 4.20mm Pitch, Dual Row, 12 Circuits, with Snap-in Plastic Peg PCB Lock, Gold, Natural

Series Number : 5566

Status : Active

Product Category : PCB Headers and Receptacles

Engineering Number : 5566-12B2GS-210



Documents & Resources

Drawings

[Drawing 039289128_sd.pdf](#)

[Packaging Design Drawing PK-5566-001-001.pdf](#)

3D Models and Design Files

[3D Model 039289128_stp.zip](#)

Specifications

[Application Specification AS-5557-001-001.pdf](#)

[Application Specification AS-5566-001-001.pdf](#)

[Product Specification PS-5556-001-001.pdf](#)

[Test Summary TS-5556-002-001.pdf](#)

[Test Summary TS-5566-002-001.pdf](#)

Product Environment Compliance

Compliance

GADSL/IMDS	Not Relevant
China RoHS	
EU ELV	Not Relevant
Low-Halogen Status	Low-Halogen per IEC 61249-2-21
REACH SVHC	Not Contained per D(2023)3788-DC (14 Jun 2023)
EU RoHS	Compliant per EU 2015/863

[Multiple Part Product Compliance Statements](#)

- Eu RoHS
- REACH SVHC
- Low-Halogen

Multiple Part Industry Compliance Documents

- IPC 1752A Class C
- IPC 1752A Class D
- Molex Product Compliance Declaration
- IEC-62474
- chemSHERPA (xml)

EU RoHS Certificate of Compliance

Part Details

General

Status	Active
Category	PCB Headers and Receptacles
Series	5566
Description	Mini-Fit Jr. Vertical Header, 4.20mm Pitch, Dual Row, 12 Circuits, with Snap-in Plastic Peg PCB Lock, Gold, Natural
Application	Power, Wire-to-Board
Comments	The 5566 header should be used with standard Mini-Fit female terminals. If increased amperage of up to 13A per circuit is needed, please consider using the Mini-Fit Plus HCS family 45750 terminals with 46015 headers; See Molex Product specification PS-5666-001 for current de-rating information.
Component Type	PCB Header
Product Family	Mini-Fit Family Power Connectors
Product Name	Mini-Fit Jr.
UPC	800754930253

Agency

CSA	LR19980
UL	E29179

Electrical

Current - Maximum per Contact	9.0A
-------------------------------	------

Voltage - Maximum	600V
-------------------	------

Physical

Breakaway	No
Circuits (Loaded)	12
Circuits (maximum)	12
Color - Resin	Natural
Durability (mating cycles max)	30
First Mate / Last Break	No
Flammability	94V-0
Glow-Wire Capable	No
Guide to Mating Part	No
Keying to Mating Part	None
Lock to Mating Part	Yes
Material - Metal	Brass
Material - Plating Mating	Gold
Material - Plating Termination	Matte Tin
Material - Resin	Nylon
Net Weight	2.536/g
Number of Rows	2
Orientation	Vertical
Packaging Type	Tray
PC Tail Length	3.50mm
PCB Locator	Yes
PCB Retention	Yes
PCB Thickness - Recommended	1.60mm
Pitch - Mating Interface	4.20mm
Pitch - Termination Interface	4.20mm
Plating min - Mating	0.762µm
Plating min - Termination	2.540µm
Polarized to Mating Part	Yes
Polarized to PCB	Yes
Shrouded	Fully
Stackable	No
Temperature Range - Operating	-40° to +105°C

Termination Interface Style	Through Hole
-----------------------------	--------------

Solder Process Data

Max-Duration	5
Lead-Free Process Capability	WAVE
Max-Cycle	1
Max-Temp	240

Mates With / Use With

Mates with Part(s)

Description	Part Number
Mini-Fit TPA2 and Mini-Fit Sigma Dual Row Receptacle Housings	<u>172708</u>
Mini-Fit Jr. Receptacle Housings	<u>5557</u>