



Part Number : [15060245](#)

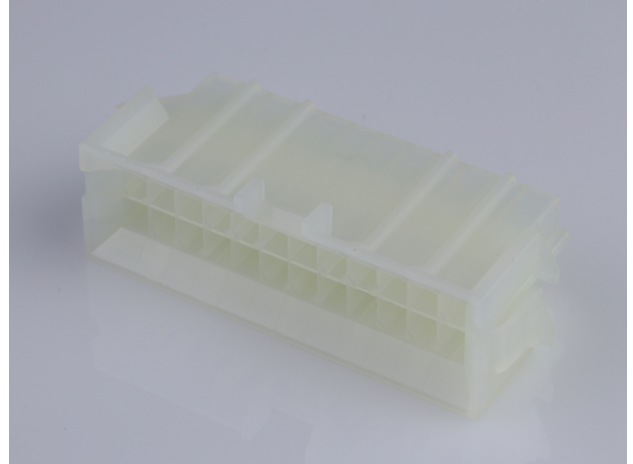
Product Description : Mini-Fit BMI Plug Housing, 4.20mm Pitch Dual Row with Panel Mount Ears, PA Polyamide Nylon 6/6, UL 94V-2, 24 Circuits

Series Number : 42475

Status : Active

Product Category : Connector Housings

Engineering Number : 42475-2411



Documents & Resources

Drawings

[Drawing 015060245_sd.pdf](#)

3D Models and Design Files

[3D Model 015060245_stp.zip](#)

Specifications

[Packaging Specification PK-42474-001-001.pdf](#)

[Product Specification PS-45750-001-001.pdf](#)

[Product Specification 55560002-PS-ES-000.pdf](#)

[Product Specification PS-5556-002-001.pdf](#)

[Product Specification 55560002-PS-CH-000.pdf](#)

[Product Specification 55560002-PS-SK-000.pdf](#)

[Test Summary TS-5556-002-001.pdf](#)

[Test Summary TS-42475-001-001.pdf](#)

Product Environment Compliance

Compliance

GADSL/IMDS	Not Relevant
China RoHS	
EU ELV	Not Relevant
Low-Halogen Status	Low-Halogen per IEC 61249-2-21
REACH SVHC	Not Contained per D(2023)3788-DC (14 Jun 2023)
EU RoHS	Compliant per EU 2015/863

Multiple Part Product Compliance Statements

- Eu RoHS
- REACH SVHC
- Low-Halogen

Multiple Part Industry Compliance Documents

- IPC 1752A Class C
- IPC 1752A Class D
- Molex Product Compliance Declaration
- IEC-62474
- chemSHERPA (xml)

EU RoHS Certificate of Compliance

Part Details

General

Status	Active
Category	Connector Housings
Series	42475
Description	Mini-Fit BMI Plug Housing, 4.20mm Pitch Dual Row with Panel Mount Ears, PA Polyamide Nylon 6/6, UL 94V-2, 24 Circuits
Application	Power, Wire-to-Board, Wire-to-Wire
Comments	Current = 13A max. per circuit when header is mated to a receptacle loaded with 45750 series terminals crimped to 16 AWG wire. See Molex product specification PS-45750-001 for additional current derating information.
Product Family	Mini-Fit Family Power Connectors
Product Name	Mini-Fit BMI
UPC	800755672725

Agency

CSA	LR19980
UL	E29179

Physical

Circuits (maximum)	24
--------------------	----

Color - Resin	Natural
Flammability	94V-2
Gender	Plug
Glow-Wire Capable	No
Lock to Mating Part	Yes
Material - Resin	Nylon
Net Weight	8.360/g
Number of Rows	2
Packaging Type	Bag
Panel Mount	Yes
Pitch - Mating Interface	4.20mm
Pitch - Termination Interface	4.20mm
Polarized to Mating Part	Yes
Stackable	No
Temperature Range - Operating	-40° to +105°C

Mates With / Use With

Mates with Part(s)

Description	Part Number
Mini-Fit BMI Receptacle Housing, 4.20mm Pitch, Dual Row with Panel Mount Ears, PA Polyamide Nylon 6/6, UL 94V-2, 24 Circuits	<u>0015060240</u>
Mini-Fit Jr. Receptacle Housing, Dual Row, 24 Circuits, UL 94V-2, Natural	<u>0039012240</u>
Mini-Fit HCS Receptacle Header, 4.20mm Pitch, Dual Row, Vertical, Blind Mating, with Snap-in Plastic Pegs, 24 Circuits	<u>0444752411</u>
Mini-Fit BMI Receptacle Housing, 4.20mm Pitch, Dual Row, Panel Mount, Slide-and-Lock, Nylon 6/6, UL 94V-0, 18 Circuits	<u>0445160009</u>
Mini-Fit BMI Vertical Dual Row Receptacle Headers	<u>42385</u>

Use with Part(s)

Description	Part Number
-------------	-------------

Pre-Crimped Lead Mini-Fit Male-to-Mini-Fit Male, Tin (Sn) Plating, 150.00mm Length, 18 AWG, Red	/content/molex/molex-dot-com/us/en/products/product-page.html/797580005.html
Pre-Crimped Lead Mini-Fit Male-to-Mini-Fit Male, Tin (Sn) Plating, 300.00mm Length, 18 AWG, Red	/content/molex/molex-dot-com/us/en/products/product-page.html/797580013.html
Mini-Fit Male Crimp Terminals	<u>5558</u>
Mini-Fit Plus Male Crimp Terminals	<u>46012</u>

This document was generated on Nov 06, 2023