



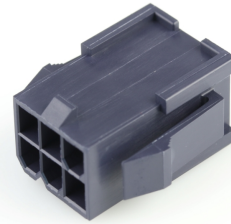
Part Number : [469930610](#)

Product Description : Mini-Fit Jr. Plug Housing, Dual Row with Panel Mount Ears, Nylon 6/6,UL 94V-2, Panel Mount, 6 Circuits, Glow-Wire Capable, Black

Series Number : 46993

Status : Active

Product Category : Connector Housings



Documents & Resources

Drawings

[Drawing 469930610_sd.pdf](#)

3D Models and Design Files

[3D Model 469930610_stp.zip](#)

Specifications

[Application Specification 55560001-AS-000.pdf](#)

[Packaging Specification PK-5559-001-001.pdf](#)

[Product Specification PS-45750-001-001.pdf](#)

[Product Specification PS-5556-001-001.pdf](#)

[Test Summary TS-5556-002-001.pdf](#)

[Test Summary 55560010-TS-000.pdf](#)

[Test Summary 457500003-TS-000.pdf](#)

Product Environment Compliance

Compliance

GADSL/IMDS	Not Relevant
China RoHS	
EU ELV	Not Relevant
Low-Halogen Status	Not Low-Halogen per IEC 61249-2-21
REACH SVHC	Not Contained per D(2023)3788-DC (14 Jun 2023)
EU RoHS	Compliant per EU 2015/863

[Multiple Part Product Compliance Statements](#)

- Eu RoHS

- REACH SVHC

- Low-Halogen

Multiple Part Industry Compliance Documents

- IPC 1752A Class C

- IPC 1752A Class D

- Molex Product Compliance Declaration

- IEC-62474

- chemSHERPA (xml)

EU RoHS Certificate of Compliance

Part Details

General

Status	Active
Category	Connector Housings
Series	46993
Description	Mini-Fit Jr. Plug Housing, Dual Row with Panel Mount Ears, Nylon 6/6,UL 94V-2, Panel Mount, 6 Circuits, Glow-Wire Capable, Black
Application	Power, Wire-to-Board, Wire-to-Wire
Product Family	Mini-Fit Family Power Connectors
Product Name	Mini-Fit Jr.
UPC	887191638799

Agency

CSA	LR19980
UL	E29179

Electrical

Current - Maximum per Contact	13.0A
-------------------------------	-------

Physical

Circuits (maximum)	6
Color - Resin	Black
Flammability	94V-2
Gender	Plug
Glow-Wire Capable	Yes

Keying to Mating Part	None
Lock to Mating Part	Yes
Material - Resin	Nylon
Net Weight	2.497/g
Number of Rows	2
Packaging Type	Bag
Panel Mount	No
Pitch - Mating Interface	4.20mm
Pitch - Termination Interface	4.20mm
Polarized to Mating Part	Yes
Ports	1
Stackable	No
Temperature Range - Operating	-40° to +105°C

Solder Process Data

Lead-Free Process Capability	N/A
------------------------------	-----

Mates With / Use With

Mates with Part(s)

Description	Part Number
Mini-Fit Jr. Dual Row Receptacle Housings	<u>46992</u>

Use with Part(s)

Description	Part Number
Mini-Fit Male Crimp Terminals	<u>5558</u>
Mini-Fit Plus Male Crimp Terminals	<u>46012</u>