

SKU:SEN0485 (<https://www.dfrobot.com/product-2341.html>)

Introduction
Features
Specification
Board Overview
Dimension
Tutorial
FAQ
More Documents

(<https://www.dfrobot.com/product-2341.html>)

Introduction

This small 5V non-contact liquid level sensor with Gravity Interface is able to detect 0-100°C conductive liquid levels in non-metallic containers within 3mm. Provided with digital output(low), the sensor can be directly used on Arduino UNO for liquid level detection of water tank, beverage machine, water pipe, scientific experiment test tube, etc.

With IP67 protection level, the module employs an integrated seamless shell and fully enclosed waterproof glue encapsulation process to block the intrusion of dust and protect internal electric components. Besides, the sensor cable, with great electrical conductivity, is flexible, durable, waterproof, and oil-proof.



Features

- Gravity interface, easy to connect
- Small size, IP67 protection grade

Specification

- Supply Voltage: 5V
- Sensing Distance: 3mm
- Applicable Medium: 0-100°C conductive liquid (can only detect non-metallic containers)
- Output Mode: high/low(low level output)

- Working Current: <5mA
- Working Temperature: -5~80°C
- Storage Temperature: -20~85°C
- Protection Level: IP67

[Introduction](#)[Features](#)[Specification](#)[Board Overview](#)[Dimension](#)[Tutorial](#)[FAQ](#)[More Documents](#)

Board Overview



Label	Name	Description
Green	OUT	Sensor signal output
Red	VCC	Power supply +
Black	GND	Power supply -

>

Dimension

[Introduction](#)

[Features](#)

[Specification](#)

[Board Overview](#)

[Dimension](#)

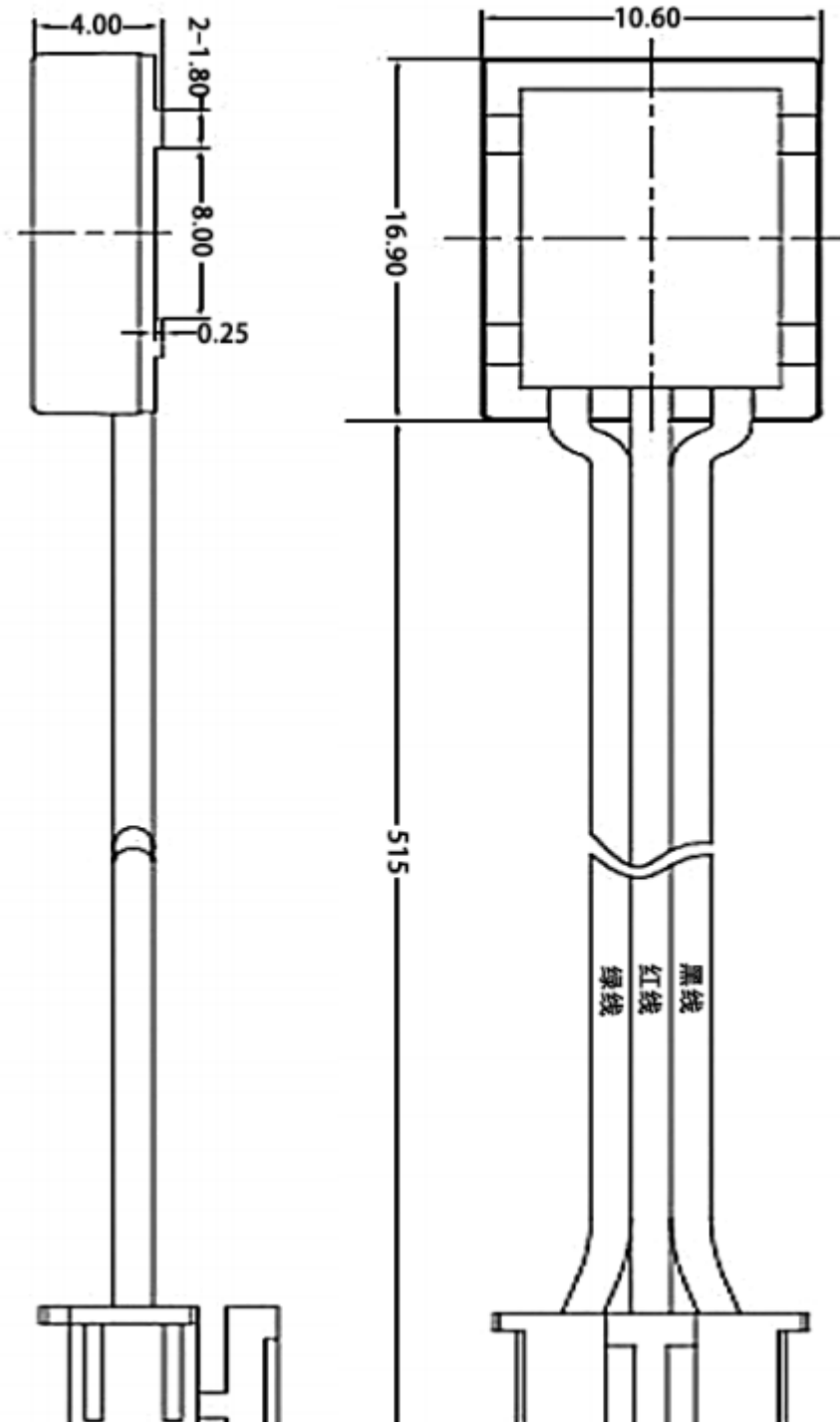
[Tutorial](#)

[FAQ](#)

[More Documents](#)



- Introduction
- Features
- Specification
- Board Overview
- Dimension
- Tutorial
- FAQ
- More Documents



>



Introduction

Features

Specification

Board Overview

Dimension

Tutorial

FAQ

More Documents

Tutorial

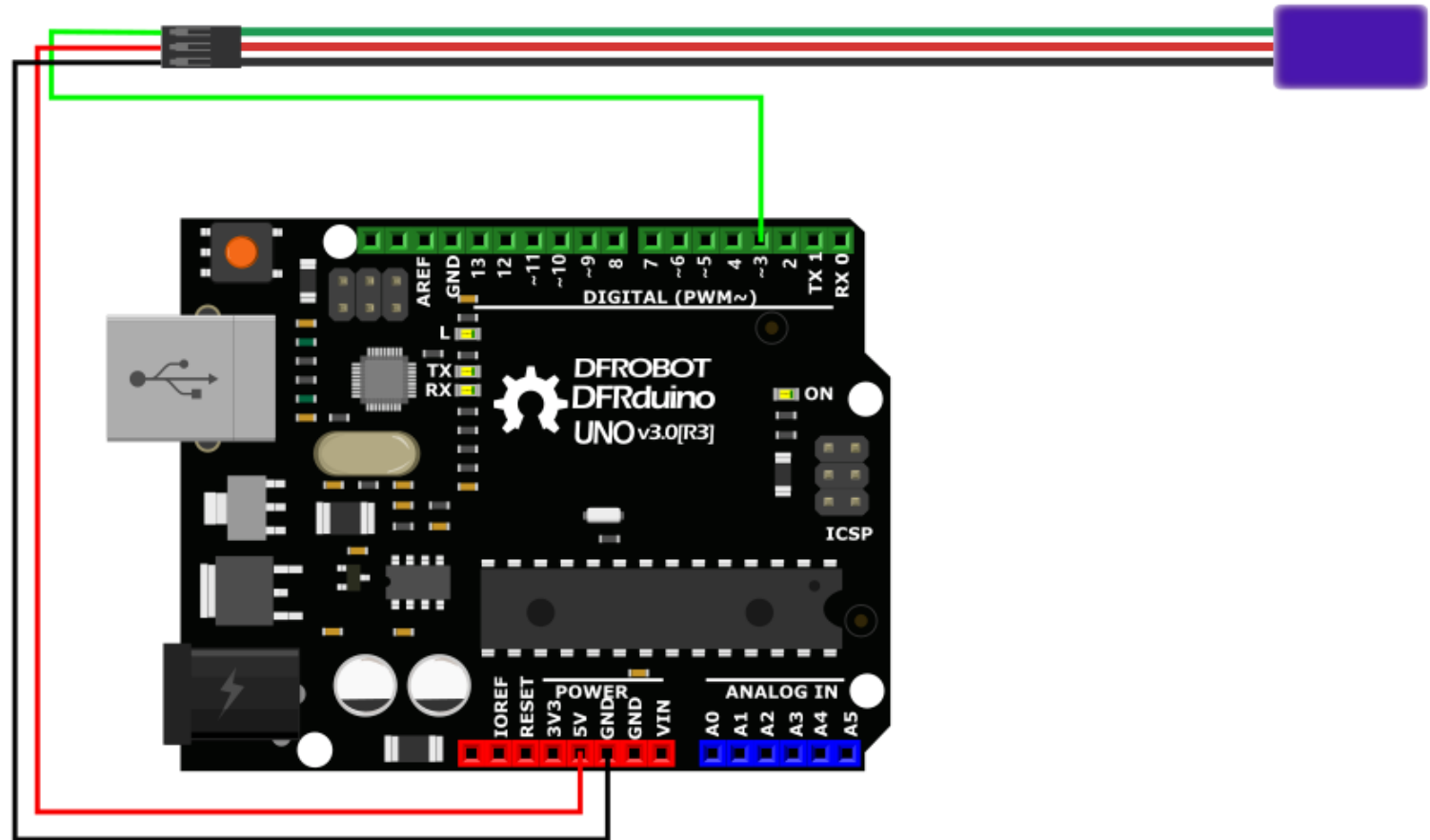
Requirements

- **Hardware**
 - DFRduino UNO R3 (<https://www.dfrobot.com/product-838.html>) (or similar) × 1
 - 5V Non-contact Liquid Level Sensor × 1
- **Software**
 - Arduino IDE (<https://www.arduino.cc/en/Main/Software>)

>

Connection Diagram

- Introduction
- Features
- Specification
- Board Overview
- Dimension
- Tutorial
- FAQ
- More Documents



>

Sample Code

Introduction
Features
Specification
Board Overview
Dimension
Tutorial
FAQ
More Documents

>

```
* @File Infrared_Approach_Sensor.ino
* @brief Detect the status of IO3 and print it in serial port
* @copyright Copyright (c) 2010 DFRobot Co.Ltd (http://www.dfrobot.com)
* @licence The MIT License (MIT)
* @version V1.0
* @date 2021-03-15
*/
int OUT = 3;
int i = 0;
void setup()
{
  Serial.begin(9600);
  pinMode(OUT, INPUT);
}
void loop()
{
  i = digitalRead (OUT);
  Serial.println(i);
  delay(5);
}
```

Expected Results

Read the status of IO3 in real time. When the sensor detects the existence of a liquid at a particular level in a container, the serial port prints 0. Otherwise, the serial port prints 1.

- Introduction
- Features
- Specification
- Board Overview
- Dimension
- Tutorial
- FAQ
- More Documents

>


A screenshot of a serial monitor window titled "COM8". The window has a title bar with standard minimize, maximize, and close buttons. Below the title bar is a text input field and a "发送" (Send) button. The main area of the window displays a vertical list of characters: 1, 1, 1, 1, 1, 1, 1, 1, 1, 1, 0, 0, 0, 0, 0, 0, 0, 0. At the bottom of the window, there are several controls: a checkbox for "自动滚屏" (Auto scroll) which is checked, a checkbox for "Show timestamp" which is unchecked, a dropdown menu for "换行符" (Line feed) set to "换行符", a dropdown menu for "波特率" (Baud rate) set to "9600", and a "清空输出" (Clear output) button.

Introduction
Features
Specification
Board Overview
Dimension
Tutorial
FAQ
More Documents

FAQ

For any questions, advice or cool ideas to share, please visit the **DFRobot Forum** (<https://www.dfrobot.com/forum/>).

More Documents

 **Get 5V Non-contact Liquid Level Sensor** (<https://www.dfrobot.com/product-2341.html>) from DFRobot Store or **DFRobot Distributor**. (<https://www.dfrobot.com/distributor>)

Turn to the Top

>