



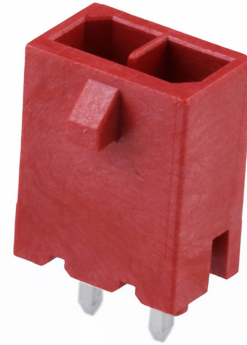
**Part Number :** [2165711024](#)

**Product Description :** Micro-Fit+ Versa Color Vertical Header, Through Hole, 3.00mm Pitch, Single Row, 4 Circuits, Matte Tin (Sn) Plating, Glow-Wire Capable, Red

**Series Number :** 216571

**Status :** Active

**Product Category :** PCB Headers and Receptacles



---

## Documents & Resources

### Drawings

[Drawing 2165711024\\_sd.pdf](#)

[Packaging Design Drawing 2165710002-PK-000.pdf](#)

### 3D Models and Design Files

[3D Model 2165711024\\_stp.zip](#)

### Specifications

[Application Specification 2064600001-AS-000.pdf](#)

[Product Specification 2064600000-PS-000.pdf](#)

[Test Summary 2157590005-TS-000.pdf](#)

---

## Product Environment Compliance

### Compliance

GADSL/IMDS	Not Relevant
China RoHS	
EU ELV	Not Relevant
Low-Halogen Status	Low-Halogen per IEC 61249-2-21
REACH SVHC	Not Contained per D(2023)3788-DC (14 Jun 2023)
EU RoHS	Compliant per EU 2015/863

### [Multiple Part Product Compliance Statements](#)

- Eu RoHS
- REACH SVHC
- Low-Halogen

## Multiple Part Industry Compliance Documents

- IPC 1752A Class C
- IPC 1752A Class D
- Molex Product Compliance Declaration
- IEC-62474
- chemSHERPA (xml)

## EU RoHS Certificate of Compliance

---

### Part Details

#### General

Status	Active
Category	PCB Headers and Receptacles
Series	216571
Description	Micro-Fit+ Versa Color Vertical Header, Through Hole, 3.00mm Pitch, Single Row, 4 Circuits, Matte Tin (Sn) Plating, Glow-Wire Capable, Red
Application	Power, Wire-to-Board
Component Type	PCB Header
Product Family	Micro-Fit+ Connector System
Product Name	Micro-Fit+ Versa Color
UPC	196823366437

#### Agency

CSA	LR19980
UL	E29179

#### Electrical

Current - Maximum per Contact	13.0A
Voltage - Maximum	600V AC (RMS)/DC

#### Physical

Breakaway	No
Circuits (Loaded)	4
Circuits (maximum)	4
Color - Resin	Red

Durability (mating cycles max)	25
First Mate / Last Break	No
Flammability	94V-0
Glow-Wire Capable	Yes
Keying to Mating Part	Yes
Lock to Mating Part	Yes
Material - Metal	High Copper Alloy
Material - Plating Mating	Matte Tin
Material - Plating Termination	Matte Tin
Material - Resin	Liquid Crystal Polymer
Net Weight	0.647/g
Number of Rows	1
Orientation	Vertical
Packaging Type	Tray
PC Tail Length	3.18mm
PCB Retention	Yes
PCB Thickness - Recommended	1.57mm
Pitch - Mating Interface	3.00mm
Pitch - Termination Interface	3.00mm
Polarized to Mating Part	Yes
Polarized to PCB	Yes
Shrouded	Yes
Temperature Range - Operating	-40° to +105°C
Termination Interface Style	Through Hole

---

## Mates With / Use With

### Mates with Part(s)

Description	Part Number
Micro-Fit+ Single Row Receptacle Housings	<u>215759</u>