



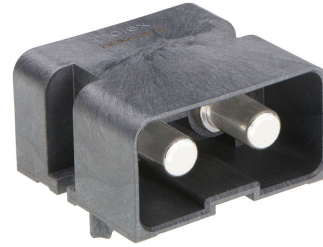
Part Number : [2155108241](#)

Product Description : PowerWize BMI
8.00mm, 2-circuit, Solder Tail, Right-Angle
Header in Tray

Series Number : 215510

Status : Active

Product Category : PCB Headers and
Receptacles



Documents & Resources

Drawings

[Drawing 2155108241_sd.pdf](#)

[Packaging Design Drawing 2155108121-PK-000.pdf](#)

Specifications


[Application Specification 2155101000-AS-000.pdf](#)

[Product Specification 2155100008-PS-000.pdf](#)

[Test Summary 2155108000-TS-000.pdf](#)

Product Environment Compliance

Compliance

GADSL/IMDS	Compliant with Exemption 33
China RoHS	
EU ELV	Not Relevant
Low-Halogen Status	Low-Halogen per IEC 61249-2-21
REACH SVHC	Not Contained per D(2023)3788-DC (14 Jun 2023)
EU RoHS	Compliant per EU 2015/863

Multiple Part Product Compliance Statements

- Eu RoHS
- REACH SVHC
- Low-Halogen

Multiple Part Industry Compliance Documents

- IPC 1752A Class C
- IPC 1752A Class D

- Molex Product Compliance Declaration
- IEC-62474
- chemSHERPA (xml)

EU RoHS Certificate of Compliance

Part Details

General

Status	Active
Category	PCB Headers and Receptacles
Series	215510
Description	PowerWize BMI 8.00mm, 2-circuit, Solder Tail, Right-Angle Header in Tray
Application	Panel-to-Board, Power
Component Type	PCB Header
Product Family	PowerWize BMI Connectors
Product Name	PowerWize BMI
UPC	195842229051

Agency

UL	E29179
----	--------

Electrical

Current - Maximum per Contact	175.0A
Voltage - Maximum	1000V

Physical

Breakaway	No
Circuits (Loaded)	2
Circuits (maximum)	2
Color - Resin	Black
Diameter	8.00mm
Durability (mating cycles max)	200
Flammability	94V-0
Glow-Wire Capable	No
Keying to Mating Part	None

Lock to Mating Part	No
Material - Metal	Copper Alloy
Material - Plating Mating	Silver
Material - Plating Termination	Silver
Material - Resin	Liquid Crystal Polymer
Net Weight	73.790/g
Number of Rows	1
Orientation	Right Angle
Packaging Type	Tray
PC Tail Length	3.50mm
PCB Locator	Yes
PCB Retention	Yes
PCB Thickness - Recommended	2.36mm
Pitch - Mating Interface	19.00mm
Pitch - Termination Interface	19.00mm
Plating min - Mating	3.180µm
Plating min - Termination	3.180µm
Polarized to Mating Part	Yes
Polarized to PCB	Yes
Temperature Range - Operating	-40° to +125°C
Termination Interface Style	Solder

Mates With / Use With

Mates with Part(s)

Description	Part Number
PowerWize BMI 8.00mm, 2-circuit, Black Panel Mount Receptacle Housing in Bag	<u>2155118121</u>