



## EX-AZM 415-02/02ZPK 24VAC/DC-3D

- Ex-Zone 22
- Metal enclosure
- 130 mm x 100 mm x 46,5 mm
- Clamping force 3500N
- 2 switches in one enclosure
- Adjustable ball latch to 400 N
- Interlock with protection against incorrect locking.
- Problem-free opening of stressed doors by means of bell-crank system
- 2 cable entries M 20 x 1.5

## Data

### Ordering data

Product type description	EX-AZM 415-02/02ZPK 24VAC/DC-3D
Article number (order number)	101188673
EAN (European Article Number)	4030661344546
eCl@ss number, version 12.0	27-27-26-03
eCl@ss number, version 11.0	27-27-26-03
eCl@ss number, version 9.0	27-27-26-03
ETIM number, version 7.0	EC002593
ETIM number, version 6.0	EC002593

### Explosion protection

Explosion protection: regulations	EN IEC 60079-0 EN 60079-31
Explosion protection zones	22
Explosion protection category	3D

## General data

Standards	EN IEC 60947-5-1
Working principle	electromechanical
Housing material	Aluminium
Housing coating material	painted
Gross weight	910 g

## General data - Features

Power to unlock	Yes
Number of actuating directions	1
Number of safety contacts	4

## Safety classification

Standards	EN ISO 13849-1
Mission time	20 Year(s)

## Safety classification - Safety outputs

B <sub>10D</sub> Normally-closed contact (NC)	2,000,000 Operations
---	----------------------

## Mechanical data

Mechanical life, minimum	1,000,000 Operations
Impact energy, maximum	4 J
Holding force	3,500 N
Latching force, minimum	80 N
Latching force, maximum	400 N
Positive break travel	5 mm
Positive break force, minimum	15 N

Actuating speed, maximum	1 m/s
--------------------------	-------

### Mechanical data - Connection technique

Termination	Screw terminals M20 x 1.5
Cable cross-section of the cable glands, minimum	7 mm
Cable cross-section of the cable glands, maximum	12 mm
Cable section, minimum	0.75 mm <sup>2</sup>
Cable section, maximum	2.5 mm <sup>2</sup>
Note (Cable section)	All indications including the conductor ferrules.

### Mechanical data - Dimensions

Length of sensor	46.5 mm
Width of sensor	130 mm
Height of sensor	100 mm

### Ambient conditions

Degree of protection	IP67
Ambient temperature	-10 ... +50 °C

### Ambient conditions - Insulation values

Rated insulation voltage $U_i$	250 VAC
Rated impulse withstand voltage $U_{imp}$	4 kV

### Electrical data

Thermal test current	6 A
Rated control voltage	24 VAC
Rated control voltage	24 VDC
Utilisation category AC-15	230 VAC
Utilisation category AC-15	4 A

Electrical power consumption, maximum	10 W
Switching element	NO contact, NC contact
Switching principle	Slow action
Material of the contacts, electrical	Silver

## Scope of delivery

Scope of delivery	Actuator must be ordered separately. Including Ex-certified screwed cable gland and screw plug
-------------------	---

## Ordering code

Product type description:  
EX-AZM 415-(1)ZPK(2)-24VAC/DC-(3)-3D

(1)

<b>11/11</b>	2 NC contacts / 2 NO contacts
<b>02/11</b>	3 NC contacts / 1 NO contacts
<b>02/20</b>	2 NC contacts / 2 NO contacts
<b>02/02</b>	4 NC contact

(2)

<b>without</b>	Power to unlock
<b>A</b>	Power to lock

(3)

<b>1637</b>	Gold-plated contacts
-------------	----------------------

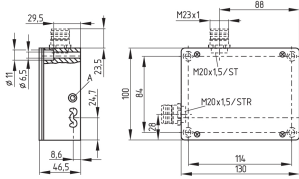
## Pictures

### Product picture (catalogue individual photo)



ID: kexazf10  
 | 455.3 kB | .jpg | 352.778 x 235.303 mm - 1000 x 667 px - 72 dpi  
 | 32.9 kB | .png | 74.083 x 49.389 mm - 210 x 140 px - 72 dpi  
 | 59.3 kB | .jpg | 123.472 x 82.197 mm - 350 x 233 px - 72 dpi

## Dimensional drawing basic component



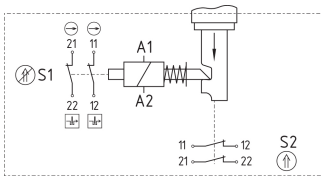
ID: 1azm4g01

| 35.2 kB | .cdr |

| 9.5 kB | .png | 74.083 x 51.506 mm - 210 x 146 px - 72 dpi

| 132.1 kB | .jpg | 352.778 x 245.181 mm - 1000 x 695 px - 72 dpi

## Diagram



ID: kazm4k23

| 67.0 kB | .ai | 297 x 210.002 mm - 841 x 595 px - 72 dpi

| 83.0 kB | .jpg | 352.778 x 188.031 mm - 1000 x 533 px - 72 dpi

| 3.7 kB | .png | 74.083 x 39.511 mm - 210 x 112 px - 72 dpi

Schmersal Ltd., Sparrowhawk Close, WR14 1GL Malvern

The details and data referred to have been carefully checked. Images may diverge from original. Further technical data can be found in the manual. Technical amendments and errors possible.

Generated on: 14/02/2024, 04:56