



## EX-T. 454-22Z-H-DN

- Ex-Zone 1 and 21
- Cast iron enclosure, 2K paint
- Exterior parts made of stainless steel
- 2 switching angles (prewarning, deactivation)

## Data

### Ordering data

Note (Delivery capacity)	Phased-out product
Product type description	EX-T. 454-22Z-H-DN
Article number (order number)	103025519
EAN (European Article Number)	4030661514154
eCl@ss number, version 12.0	27-27-06-01
eCl@ss number, version 11.0	27-27-06-01
eCl@ss number, version 9.0	27-27-06-01
ETIM number, version 7.0	EC000030
ETIM number, version 6.0	EC000030

### Approvals - Standards

Certificates	TÜV ATEX IEC Ex INMETRO
--------------	----------------------------------

### Explosion protection

Explosion protection: regulations	EN IEC 60079-0 EN 60079-31
Explosion protection zones	21
Explosion protection category	2D
Explosion protection designation	⊕ II 2D Ex tb IIIC T80°C Db

## General data

Gross weight	1,970 g
--------------	---------

## Mechanical data

Mechanical life, minimum	1,000,000 Operations
--------------------------	----------------------

## Mechanical data - Connection technique

Cable section, minimum	0.25 mm <sup>2</sup>
Cable section, maximum	2.5 mm <sup>2</sup>

## Ambient conditions - Insulation values

Rated insulation voltage $U_i$	400 V
Rated impulse withstand voltage $U_{imp}$	6 kV

## Electrical data

Utilisation category AC-15	230 VAC
Utilisation category AC-15	4 A
Utilisation category DC-13	24 VDC
Utilisation category DC-13	1 A
Switching principle	Slow action

## Ordering code

Product type description:  
EX-T. 454-(1)Z-(2)(3)(4)

(1)	
<b>11</b>	1 NO contacts/1 NC contact
<b>02</b>	2 NC contact
<b>20</b>	2 NO contacts
<b>22</b>	2 NO contacts/2 NC contact
<b>13</b>	1 NO contacts/3 NC contact
<b>31</b>	3 NO contacts/1 NC contact
<b>04</b>	4 NC contact

(2)	
<b>without</b>	Without staggered contacts, standard for 11, 02, 20
<b>H</b>	With staggered contacts for 22, 13, 31, 04

(3)	
<b>without</b>	Included in standard version
<b>DN</b>	With integrated Dupline® input module (only Zone 21 and 22)

(4)	
<b>without</b>	Smooth shaft (Standard)
<b>1801</b>	Toothed shaft (10° increments)

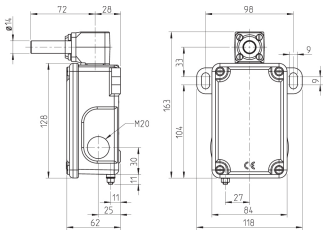
## Pictures

### Product picture (catalogue individual photo)



ID: kt454f04  
 | 62.2 kB | .png | 73.731 x 107.597 mm - 209 x 305 px - 72 dpi  
 | 865.3 kB | .jpg | 352.778 x 513.644 mm - 1000 x 1456 px - 72 dpi  
 | 47.0 kB | .jpg | 84.667 x 123.472 mm - 240 x 350 px - 72 dpi

### Dimensional drawing basic component

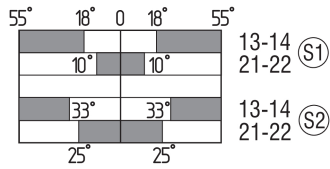


ID: kext4g01

| 129.8 kB | .jpg | 352.778 x 245.886 mm - 1000 x 697 px - 72 dpi

| 18.0 kB | .png | 74.083 x 51.506 mm - 210 x 146 px - 72 dpi

## Switch travel diagram



ID: kext4s01

| 2.8 kB | .png | 74.083 x 38.453 mm - 210 x 109 px - 72 dpi

| 93.2 kB | .jpg | 352.778 x 183.444 mm - 1000 x 520 px - 72 dpi

Schmersal Ltd., Sparrowhawk Close, WR14 1GL Malvern

The details and data referred to have been carefully checked. Images may diverge from original. Further technical data can be found in the manual. Technical amendments and errors possible.

Generated on: 05/02/2024, 09:20