



EX-T4V7H335-11Y-2138

- Ex-Zone 1 and 21
- Metal enclosure
- Good resistance to oil and petroleum spirit
- 40,5 mm x 76 mm x 38 mm
- Actuator heads can be repositioned by 4 x 90°
- Mounting details to EN 50041
- 1 Cable entry M 20 x 1.5

Data



Ordering data

Product type description	EX-T4V7H335-11Y-2138
Article number (order number)	101212070
EAN (European Article Number)	4030661581927
eCl@ss number, version 12.0	27-27-26-01
eCl@ss number, version 11.0	27-27-26-01
eCl@ss number, version 9.0	27-27-26-01
ETIM number, version 7.0	EC000030
ETIM number, version 6.0	EC000030

Approvals - Standards

Certificates	cULus IEC Ex CCC CCC EX DEKRA
--------------	---

Explosion protection

Explosion protection: regulations	EN IEC 60079-0 EN 60079-1 EN 60079-7 EN 60079-31
Explosion protection zones	1 21
Explosion protection category	2G 2D
Explosion protection designation	 II 2G Ex d e IIC T6 Gb  II 2D Ex tb IIIC T80°C Db

General data

Standards	BG-GS-ET-15 EN IEC 60947-5-1
Housing construction form	Norm construction design
Housing material	Metal, zinc die-cast
Housing coating material	painted
Lever material	Metal film
Gross weight	400 g

General data - Features

Safety functions	Yes
------------------	-----

Safety classification

Standards	EN ISO 13849-1
Mission time	20 Year(s)

Safety classification - Safety outputs

B _{10D} Normally-closed contact (NC)	20,000,000 Operations
---	-----------------------

Mechanical data

Actuating element	Roller lever
-------------------	--------------

Roller material	Plastic
Mechanical life, minimum	1,000,000 Operations
Impact energy, maximum	7 J
Actuating speed, maximum	1 m/s
Note (Actuating speed)	Actuating speed with actuating angle 30° to switch axis

Mechanical data - Connection technique

Termination	Screw terminals M20 x 1.5
Cable cross-section of the cable glands, minimum	7 mm
Cable cross-section of the cable glands, maximum	12 mm
Cable section, minimum	1 mm ²
Cable section, maximum	2.5 mm ²
Note (Cable section)	All indications including the conductor ferrules.
Wire cross-section	13 AWG

Mechanical data - Dimensions

Length of sensor	57.3 mm
Width of sensor	40.5 mm
Height of sensor	173.5 mm

Ambient conditions

Degree of protection	IP65
Ambient temperature, maximum (Cable section 1mm ²)	+50 °C
Ambient temperature, maximum (Cable section 2.5mm ²)	+55 °C

Ambient conditions - Insulation values

Rated insulation voltage U_i	500 V
Rated impulse withstand voltage $U_{i,imp}$	4 kV

Electrical data

Thermal test current	10 A
Utilisation category AC-15	230 VAC
Utilisation category AC-15	4 A
Utilisation category DC-13	24 VDC
Utilisation category DC-13	1 A
Switching principle	Slow action
Bounce duration, maximum	3 ms
Switching frequency	1,800 /h
Material of the contacts, electrical	Silver

Scope of delivery

Scope of delivery	Ex-certified screwed cable gland
-------------------	----------------------------------

Ordering code

Product type description:

EX-(1)(2) 335-(3)Z(4)-(5)-(6)-(7)-3G/D

(1)

Z	Snap action
T	Slow action (not for AF/S)

(2)

S	Plunger S
R	Roller plunger R
H	Roller lever H
10H	Rod lever 10H
7H	Roller lever 7H
7H-2138	Roller lever 7H for position switches with safety function
1K	Offset roller lever 1K
3K	Angle roller lever 3K

(3)	
11	1 NO contacts/1 NC contact
02	2 NC contact
20	2 NO contacts (not suitable for safety applications)
01/01	1 NC contact left / 1 NC contact right
12	1 NO contact/2 NC contacts
03	3 NC contact
(4)	
H	Slow action with staggered contacts
UE	Slow action with overlapping contacts
(5)	
1297	Enclosure with transverse slotted holes
(6)	
2138	Roller lever 7H for position switches with safety function
(7)	
1637	Gold-plated contacts

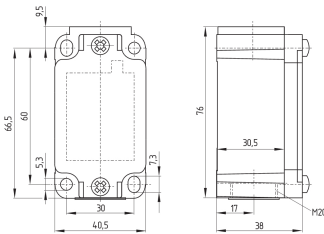
Pictures

Product picture (catalogue individual photo)



ID: k335hf05
 | 1.1 MB | .jpg | 352.778 x 977.547 mm - 1000 x 2771 px - 72 dpi
 | 124.4 kB | .png | 74.083 x 204.964 mm - 210 x 581 px - 72 dpi
 | 30.7 kB | .jpg | 44.45 x 123.472 mm - 126 x 350 px - 72 dpi

Dimensional drawing basic component



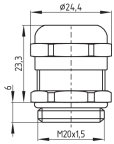
ID: k-335g01

| 27.9 kB | .cdr |

| 4.1 kB | .png | 74.083 x 52.211 mm - 210 x 148 px - 72 dpi

| 126.8 kB | .jpg | 352.778 x 248.708 mm - 1000 x 705 px - 72 dpi

Dimensional drawing basic component

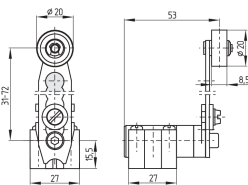


ID: 1xzm1g07

| 2.5 kB | .png | 74.083 x 51.153 mm - 210 x 145 px - 72 dpi

| 46.3 kB | .jpg | 352.778 x 243.769 mm - 1000 x 691 px - 72 dpi

Dimensional drawing actuator



ID: 1h336g02

| 88.3 kB | .cdr |

| 10.3 kB | .png | 74.083 x 52.211 mm - 210 x 148 px - 72 dpi

| 102.9 kB | .jpg | 352.778 x 248.003 mm - 1000 x 703 px - 72 dpi

Schmersal Ltd., Sparrowhawk Close, WR14 1GL Malvern

The details and data referred to have been carefully checked. Images may diverge from original. Further technical data can be found in the manual. Technical amendments and errors possible.

Generated on: 14/02/2024, 05:08