



## EX-T4VH335-11Y

- Ex-Zone 1 and 21
- Metal enclosure
- Good resistance to oil and petroleum spirit
- 40,5 mm x 76 mm x 38 mm
- Actuator heads can be repositioned by 4 x 90°
- Mounting details to EN 50041
- 1 Cable entry M 20 x 1.5
- 

## Data



### Ordering data

Product type description	EX-T4VH335-11Y
Article number (order number)	101212058
EAN (European Article Number)	4030661440095
eCl@ss number, version 12.0	27-27-26-01
eCl@ss number, version 11.0	27-27-26-01
eCl@ss number, version 9.0	27-27-26-01
ETIM number, version 7.0	EC000030
ETIM number, version 6.0	EC000030

### Approvals - Standards

Certificates	cULus IEC Ex CCC CCC EX DEKRA
--------------	---

### Explosion protection

Explosion protection: regulations	EN IEC 60079-0 EN 60079-1 EN 60079-7 EN 60079-31
Explosion protection zones	1 21
Explosion protection category	2G 2D
Explosion protection designation	 II 2G Ex d e IIC T6 Gb  II 2D Ex tb IIIC T80°C Db

## General data

Standards	BG-GS-ET-15 EN IEC 60947-5-1
Housing construction form	Norm construction design
Actuator type to EN 50041	A
Housing material	Metal, zinc die-cast
Housing coating material	painted
Lever material	Metal film
Gross weight	400 g

## General data - Features

Safety functions	Yes
Number of auxiliary contacts	1
Number of safety contacts	1

## Safety classification

Standards	EN ISO 13849-1
Mission time	20 Year(s)

## Safety classification - Safety outputs

B <sub>10D</sub> Normally-closed contact (NC)	20,000,000 Operations
---	-----------------------

## Mechanical data

Actuating element	Roller lever
Roller material	Plastic
Mechanical life, minimum	1,000,000 Operations
Impact energy, maximum	7 J
Actuating speed, maximum	1 m/s
Note (Actuating speed)	Actuating speed with actuating angle 30° to switch axis
Note (Switchover time)	Switchover time in accordance with actuating speed
Actuating torque, minimum	0.3 Nm

## Mechanical data - Connection technique

Termination	Screw terminals M20 x 1.5
Cable cross-section of the cable glands, minimum	7 mm
Cable cross-section of the cable glands, maximum	12 mm
Cable section, minimum	1 mm <sup>2</sup>
Cable section, maximum	2.5 mm <sup>2</sup>
Note (Cable section)	All indications including the conductor ferrules.
Wire cross-section	13 AWG

## Mechanical data - Dimensions

Length of sensor	60.6 mm
Width of sensor	40.5 mm
Height of sensor	134 mm

## Ambient conditions

Degree of protection	IP65
Ambient temperature, maximum (Cable section 1mm <sup>2</sup> )	+50 °C
Ambient temperature, maximum (Cable section 2.5mm <sup>2</sup> )	+55 °C

## Ambient conditions - Insulation values

Rated insulation voltage $U_i$	250 VAC 500 V
Rated impulse withstand voltage $U_{imp}$	4 kV

## Electrical data

Thermal test current	5 A
Utilisation category AC-15	230 VAC
Utilisation category DC-13	24 VDC
Switching element	NO contact, NC contact
Switching principle	Slow action
Bounce duration, maximum	3 ms
Switching frequency	1,800 /h
Material of the contacts, electrical	Silver

## Scope of delivery

Scope of delivery	Ex-certified screwed cable gland
-------------------	----------------------------------

## Ordering code

Product type description:  
EX-T(1) 335-(2)Y(3)-(4)-(5)

(1)

---

<b>S</b>	Plunger S
<b>R</b>	Roller plunger R
<b>H</b>	Roller lever H
<b>10H</b>	Rod lever 10H
<b>7H</b>	Roller lever 7H
<b>7H-2138</b>	Roller lever 7H for position switches with safety function
<b>1K</b>	Offset roller lever 1K

<b>3K</b>	Angle roller lever 3K
(2)	
<b>11</b>	1 NO contacts/1 NC contact
<b>02</b>	2 NC contact
<b>20</b>	2 NO contacts (not suitable for safety applications)
(3)	
<b>UE</b>	Slow action with overlapping contacts
<b>without</b>	Slow action with staggered contacts
(4)	
<b>2138</b>	Roller lever 7H for position switches with safety function
(5)	
<b>RMS</b>	Roller made from brass

## Pictures

### Product picture (catalogue individual photo)



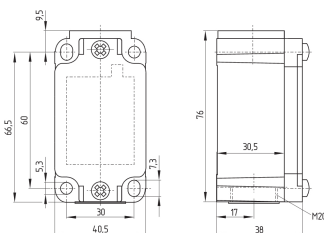
ID: k335hf01

| 1.1 MB | .jpg | 352.778 x 834.319 mm - 1000 x 2365 px - 72 dpi

| 106.3 kB | .png | 74.083 x 174.978 mm - 210 x 496 px - 72 dpi

| 34.5 kB | .jpg | 52.211 x 123.472 mm - 148 x 350 px - 72 dpi

### Dimensional drawing basic component



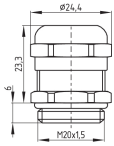
ID: k-335g01

| 27.9 kB | .cdr |

| 4.1 kB | .png | 74.083 x 52.211 mm - 210 x 148 px - 72 dpi

| 126.8 kB | .jpg | 352.778 x 248.708 mm - 1000 x 705 px - 72 dpi

## Dimensional drawing basic component

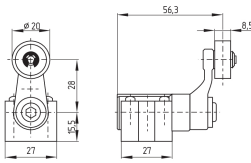


ID: 1xzm1g07

| 2.5 kB | .png | 74.083 x 51.153 mm - 210 x 145 px - 72 dpi

| 46.3 kB | .jpg | 352.778 x 243.769 mm - 1000 x 691 px - 72 dpi

## Dimensional drawing actuator



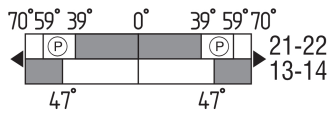
ID: 1h336g01

| 65.6 kB | .cdr |

| 4.1 kB | .png | 74.083 x 51.858 mm - 210 x 147 px - 72 dpi

| 84.5 kB | .jpg | 352.778 x 247.297 mm - 1000 x 701 px - 72 dpi

## Switch travel diagram



ID: kh335s27

| 21.5 kB | .cdr |

| 2.3 kB | .png | 74.083 x 23.636 mm - 210 x 67 px - 72 dpi

| 69.1 kB | .jpg | 352.778 x 112.889 mm - 1000 x 320 px - 72 dpi

Schmersal Ltd., Sparrowhawk Close, WR14 1GL Malvern

The details and data referred to have been carefully checked. Images may diverge from original. Further technical data can be found in the manual. Technical amendments and errors possible.

Generated on: 14/02/2024, 05:12