



## EX-TV7H 235-20Z-2138-3D

- Metal enclosure
- Wide range of alternative actuators
- Good resistance to oil and petroleum spirit
- 30 mm x 63,5 mm x 30 mm
- Actuator heads can be repositioned by 4 x 90°
- Mounting details to EN 50047
- 1 Cable entry M 20 x 1.5
- Lever angle adjustable in 10° steps

## Data

### Ordering data

Product type description	EX-TV7H 235-20Z-2138-3D
Article number (order number)	103002225
EAN (European Article Number)	4030661423333
eCl@ss number, version 12.0	27-27-06-01
eCl@ss number, version 11.0	27-27-06-01
eCl@ss number, version 9.0	27-27-06-01
ETIM number, version 7.0	EC000030
ETIM number, version 6.0	EC000030

### Approvals - Standards

Certificates	INMETRO
--------------	---------

### Explosion protection

Explosion protection: regulations	EN IEC 60079-0 EN IEC 60079-15 EN 60079-31
-----------------------------------	--

Explosion protection zones	2 22
Explosion protection category	3G 3D
Explosion protection designation	⊕ II 3G Ex nC IIC T5 Gc X ⊕ II 3D Ex tc IIIC T90°C Dc X
Manufacturer declaration	ATEX Zone 2 and 22

## General data

Standards	BG-GS-ET-15 EN IEC 60947-5-1
Housing construction form	Norm construction design
Housing material	Metal, zinc die-cast
Housing coating material	painted
Lever material	Metal film
Gross weight	260 g

## General data - Features

Number of auxiliary contacts	2
Number of safety contacts	0

## Safety classification

Standards	EN ISO 13849-1
Mission time	20 Year(s)

## Mechanical data

Actuating element	Roller lever
Roller material	Plastic
Mechanical life, minimum	20,000,000 Operations
Actuating speed, minimum	1,440 mm/min
Actuating speed, maximum	1 m/s

Note (Actuating speed)	Actuating speed with actuating angle 30° to switch axis
Note Bounce duration	Bounce duration in accordance with actuating speed
Note (Switchover time)	Switchover time in accordance with actuating speed
Actuating torque, minimum	0.2 Nm
Positive break torque	0.2 Nm

### Mechanical data - Connection technique

Termination	Screw terminals M20 x 1.5
Cable cross-section of the cable glands, minimum	7 mm
Cable cross-section of the cable glands, maximum	12 mm
Cable section, minimum	0.75 mm <sup>2</sup>
Cable section, maximum	2.5 mm <sup>2</sup>
Note (Cable section)	All indications including the conductor ferrules.
Wire cross-section	13 AWG

### Mechanical data - Dimensions

Length of sensor	49 mm
Width of sensor	30 mm
Height of sensor	160.5 mm

### Ambient conditions

Degree of protection	IP67
Ambient temperature	-20 ... +60 °C

### Ambient conditions - Insulation values

Rated insulation voltage $U_i$	500 V
Rated impulse withstand voltage $U_{imp}$	6 kV

### Electrical data

Thermal test current	10 A
Utilisation category AC-15	230 VAC
Utilisation category AC-15	4 A
Utilisation category DC-13	24 VDC
Utilisation category DC-13	1 A
Switching element	Normally open contact (NO)
Switching principle	Slow action
Switching frequency	5,000 /h
Material of the contacts, electrical	Silver

## Scope of delivery

Scope of delivery	Ex-certified screwed cable gland
-------------------	----------------------------------

## Ordering code

Product type description:

EX-(1)(2) 235-(3)Z-(4)-(5)-(6)-(7)-3D

(1)

<b>Z</b>	Snap action
<b>T</b>	Slow action (not for AF/S)

(2)

<b>S</b>	Plunger S
<b>R</b>	Roller plunger R
<b>4S</b>	Plunger 4S
<b>4R</b>	Roller plunger 4R
<b>1R</b>	Offset roller lever 1R
<b>K</b>	Offset roller lever K
<b>3K</b>	Angle roller lever 3K
<b>4K</b>	Angle roller lever 4K
<b>K4</b>	Angle roller lever K4
<b>1H</b>	Roller lever 1H

<b>7H</b>	Roller lever 7H
<b>10H</b>	Rod lever 10H
<b>12H</b>	Roller lever 12H
<b>14H</b>	Roller lever 14H
(3)	
<b>02</b>	2 NC contact
<b>11</b>	1 NO contacts/1 NC contact
<b>20</b>	2 NO contacts, (switches with 2 NO contacts are not suitable for safety applications)
(4)	
<b>H</b>	Slow action with staggered contacts
<b>UE</b>	Slow action with overlapping contacts
(5)	
<b>1297</b>	Enclosure with transverse slotted holes
(6)	
<b>2138</b>	Roller lever 7H for position switches with safety function
(7)	
<b>1637</b>	Gold-plated contacts

## Pictures

### Product picture (catalogue individual photo)



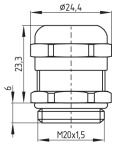
ID: k235hf02

| 344.5 kB | .jpg | 103.364 x 395.817 mm - 293 x 1122 px - 72 dpi

| 292.7 kB | .png | 74.083 x 283.633 mm - 210 x 804 px - 72 dpi

| 34.1 kB | .jpg | 32.103 x 123.472 mm - 91 x 350 px - 72 dpi

## Dimensional drawing basic component

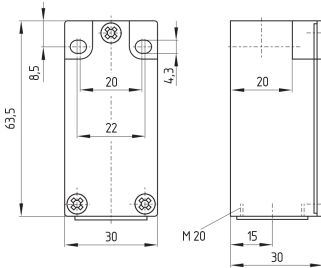


ID: 1xzm1g07

| 2.5 kB | .png | 74.083 x 51.153 mm - 210 x 145 px - 72 dpi

| 46.3 kB | .jpg | 352.778 x 243.769 mm - 1000 x 691 px - 72 dpi

## Dimensional drawing basic component



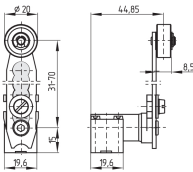
ID: k-235g01

| 24.5 kB | .cdr |

| 3.6 kB | .png | 74.083 x 61.736 mm - 210 x 175 px - 72 dpi

| 111.2 kB | .jpg | 352.778 x 293.511 mm - 1000 x 832 px - 72 dpi

## Dimensional drawing actuator



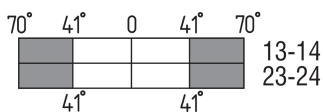
ID: 1h236g02

| 31.7 kB | .cdr |

| 9.1 kB | .png | 74.083 x 51.506 mm - 210 x 146 px - 72 dpi

| 89.0 kB | .jpg | 352.778 x 245.181 mm - 1000 x 695 px - 72 dpi

## Switch travel diagram



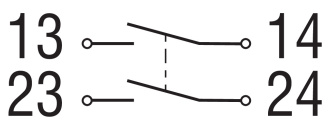
ID: kh235s04

| 24.5 kB | .cdr |

| 1.6 kB | .png | 74.083 x 22.931 mm - 210 x 65 px - 72 dpi

| 49.0 kB | .jpg | 352.778 x 109.714 mm - 1000 x 311 px - 72 dpi

## Diagram



ID: k--2sk01

| 51.9 kB | .jpg | 352.778 x 135.819 mm - 1000 x 385 px - 72 dpi

| 2.6 kB | .png | 74.083 x 28.575 mm - 210 x 81 px - 72 dpi

Schmersal Ltd., Sparrowhawk Close, WR14 1GL Malvern

The details and data referred to have been carefully checked. Images may diverge from original. Further technical data can be found in the manual. Technical amendments and errors possible.

Generated on: 14/02/2024, 05:25