



## EX-Z3K 335-11Z-3G/D

- Snap action with constant contact pressure up to switching point
- Explosion protection for ATEX Zones 2 and 22
- Metal enclosure
- Wide range of alternative actuators
- Good resistance to oil and petroleum spirit
- 40,5 mm x 76 mm x 38 mm
- Actuator heads can be repositioned by 4 x 90°
- Mounting details to EN 50041
- 1 Cable entry M 20 x 1.5
- Actuation from bottom parallel to the switch, therefore only suitable for small housings.

## Data

### Ordering data

Product type description	EX-Z3K 335-11Z-3G/D
Article number (order number)	101193996
EAN (European Article Number)	4030661632322
eCl@ss number, version 12.0	27-27-26-01
eCl@ss number, version 11.0	27-27-26-01
eCl@ss number, version 9.0	27-27-26-01
ETIM number, version 7.0	EC000030
ETIM number, version 6.0	EC000030

### Explosion protection

Explosion protection: regulations	EN IEC 60079-0 EN IEC 60079-15 EN 60079-31
Explosion protection zones	2 22

Explosion protection category	3G 3D
Explosion protection designation	⊕ II 3G Ex nC IIC T5 Gc X ⊕ II 3D Ex tc IIIC T90°C Dc X
Manufacturer declaration	ATEX Zone 2 and 22

## General data

Housing construction form	Norm construction design
Housing material	Aluminium
Housing coating material	Painted
Gross weight	212 g

## General data - Features

Safety functions	Yes
Number of auxiliary contacts	1
Number of safety contacts	1

## Safety classification

Standards	EN ISO 13849-1
Mission time	20 Year(s)

## Safety classification - Safety outputs

B <sub>10D</sub> Normally-closed contact (NC)	20,000,000 Operations
---	-----------------------

## Mechanical data

Actuating element	Angle roller lever
Mechanical life, minimum	30,000,000 Operations
Impact energy, maximum	4 J
Actuating force, minimum	12 N
Actuating speed, maximum	0.5 m/s

Note (Actuating speed)	Actuating speed with actuating angle 30° to switch axis
Note Bounce duration	Bounce duration in accordance with actuating speed

### Mechanical data - Connection technique

Termination	Screw terminals M20 x 1.5
Cable cross-section of the cable glands, minimum	7 mm
Cable cross-section of the cable glands, maximum	12 mm
Cable section, minimum	0.75 mm <sup>2</sup>
Cable section, maximum	2.5 mm <sup>2</sup>
Note (Cable section)	All indications including the conductor ferrules.
Wire cross-section	13 AWG

### Mechanical data - Dimensions

Length of sensor	38 mm
Width of sensor	58.3 mm
Height of sensor	121.5 mm

### Ambient conditions

Degree of protection	IP67
Ambient temperature	-20 ... +60 °C

### Ambient conditions - Insulation values

Rated insulation voltage $U_i$	500 V
Rated impulse withstand voltage $U_{imp}$	6 kV

### Electrical data

Thermal test current	10 A
Utilisation category AC-15	230 VAC
Utilisation category AC-15	4 A

Utilisation category DC-13	24 VDC
Utilisation category DC-13	4 A
Switching element	NO contact, NC contact
Switching principle	Snap action
Switching frequency	5,000 /h
Switchover time, maximum	2 ms
Material of the contacts, electrical	Silver

## Ordering code

Product type description:

EX-(1)(2) 335-(3)Z(4)-(5)-(6)-(7)-3G/D

(1)

<b>Z</b>	Snap action
<b>T</b>	Slow action (not for AF/S)

(2)

<b>S</b>	Plunger S
<b>R</b>	Roller plunger R
<b>H</b>	Roller lever H
<b>10H</b>	Rod lever 10H
<b>7H</b>	Roller lever 7H
<b>7H-2138</b>	Roller lever 7H for position switches with safety function
<b>1K</b>	Offset roller lever 1K
<b>3K</b>	Angle roller lever 3K

(3)

<b>11</b>	1 NO contacts/1 NC contact
<b>02</b>	2 NC contact
<b>20</b>	2 NO contacts (not suitable for safety applications)
<b>01/01</b>	1 NC contact left / 1 NC contact right
<b>12</b>	1 NO contact/2 NC contacts
<b>03</b>	3 NC contact

(4)	
<b>H</b>	Slow action with staggered contacts
<b>UE</b>	Slow action with overlapping contacts
(5)	
<b>1297</b>	Enclosure with transverse slotted holes
(6)	
<b>2138</b>	Roller lever 7H for position switches with safety function
(7)	
<b>1637</b>	Gold-plated contacts

## Pictures

### Product picture (catalogue individual photo)



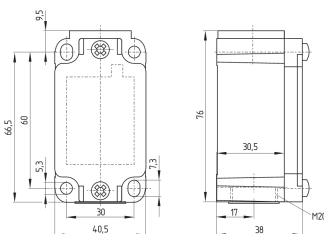
ID: k335kf02

| 444.7 kB | .jpg | 185.914 x 360.892 mm - 527 x 1023 px - 72 dpi

| 98.8 kB | .png | 74.083 x 143.581 mm - 210 x 407 px - 72 dpi

| 48.6 kB | .jpg | 63.5 x 123.472 mm - 180 x 350 px - 72 dpi

### Dimensional drawing basic component



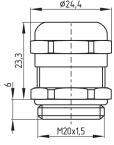
ID: k-335g01

| 27.9 kB | .cdr |

| 4.1 kB | .png | 74.083 x 52.211 mm - 210 x 148 px - 72 dpi

| 126.8 kB | .jpg | 352.778 x 248.708 mm - 1000 x 705 px - 72 dpi

### Dimensional drawing basic component

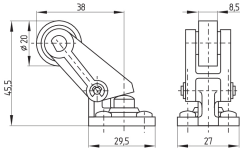


ID: 1xzm1g07

| 2.5 kB | .png | 74.083 x 51.153 mm - 210 x 145 px - 72 dpi

| 46.3 kB | .jpg | 352.778 x 243.769 mm - 1000 x 691 px - 72 dpi

## Dimensional drawing actuator



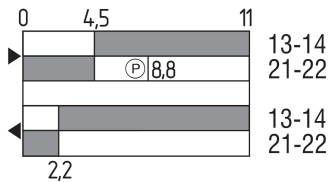
ID: 1k336g02

| 60.3 kB | .cdr |

| 8.9 kB | .png | 74.083 x 51.506 mm - 210 x 146 px - 72 dpi

| 94.1 kB | .jpg | 352.778 x 245.886 mm - 1000 x 697 px - 72 dpi

## Switch travel diagram



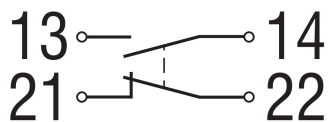
ID: kk335s05

| 25.9 kB | .cdr |

| 2.4 kB | .png | 74.083 x 40.217 mm - 210 x 114 px - 72 dpi

| 71.1 kB | .jpg | 352.778 x 191.206 mm - 1000 x 542 px - 72 dpi

## Diagram



ID: k1o1sk01

| 52.2 kB | .jpg | 352.778 x 143.581 mm - 1000 x 407 px - 72 dpi

| 2.6 kB | .png | 74.083 x 29.986 mm - 210 x 85 px - 72 dpi

Schmersal Ltd., Sparrowhawk Close, WR14 1GL Malvern

The details and data referred to have been carefully checked. Images may diverge from original. Further technical data can be found in the manual. Technical amendments and errors possible.

Generated on: 14/02/2024, 05:27