

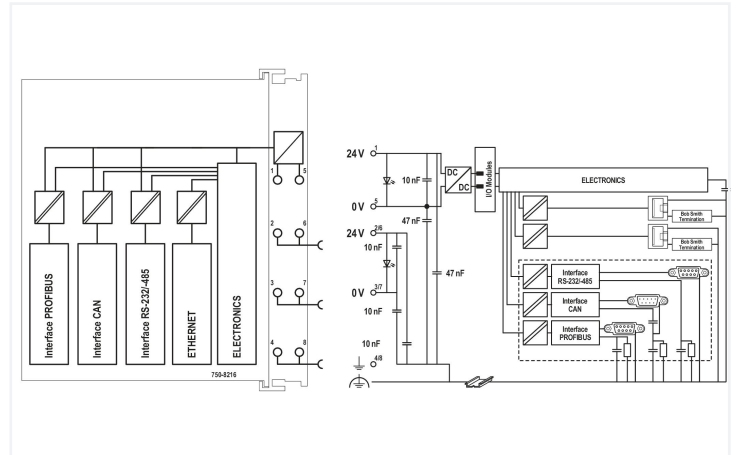
# Data Sheet | Item Number: 750-8216

Controller PFC200; 2nd Generation; 2 x ETHERNET, RS-232/-485, CAN, CANopen, PROFIBUS Slave

<https://www.wago.com/750-8216>

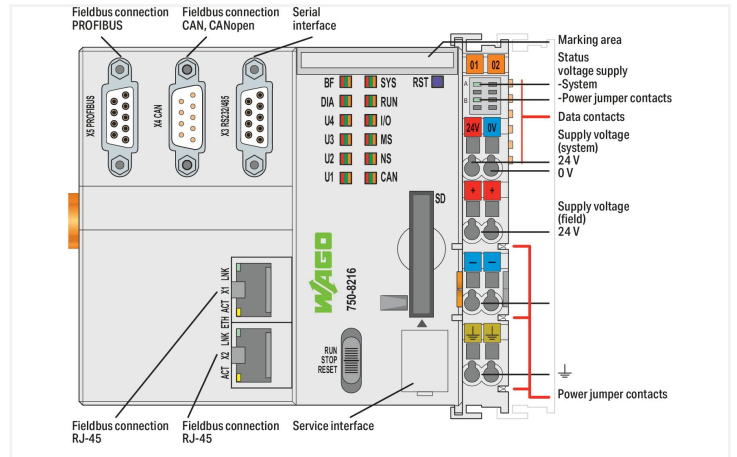


Color: ■ light gray



PFC200 Communication Options Overview

Option	Part No.	Description	Ordering	Part No.	Part Description
1	750-8216-000	Standard PFC200 (2x Ethernet, RS-232/485, CAN, CANopen, PROFIBUS DP Slave)	Standard	750-8216-000	Standard PFC200 (2x Ethernet, RS-232/485, CAN, CANopen, PROFIBUS DP Slave)
2	750-8216-001	Standard PFC200 (2x Ethernet, RS-232/485, CAN, CANopen, PROFIBUS DP Slave) with 1x RS-485	Optional	750-8216-001	Standard PFC200 (2x Ethernet, RS-232/485, CAN, CANopen, PROFIBUS DP Slave) with 1x RS-485
3	750-8216-002	Standard PFC200 (2x Ethernet, RS-232/485, CAN, CANopen, PROFIBUS DP Slave) with 2x RS-485	Optional	750-8216-002	Standard PFC200 (2x Ethernet, RS-232/485, CAN, CANopen, PROFIBUS DP Slave) with 2x RS-485
4	750-8216-003	Standard PFC200 (2x Ethernet, RS-232/485, CAN, CANopen, PROFIBUS DP Slave) with 1x RS-485 and 1x RS-232	Optional	750-8216-003	Standard PFC200 (2x Ethernet, RS-232/485, CAN, CANopen, PROFIBUS DP Slave) with 1x RS-485 and 1x RS-232
5	750-8216-004	Standard PFC200 (2x Ethernet, RS-232/485, CAN, CANopen, PROFIBUS DP Slave) with 1x RS-485 and 2x RS-232	Optional	750-8216-004	Standard PFC200 (2x Ethernet, RS-232/485, CAN, CANopen, PROFIBUS DP Slave) with 1x RS-485 and 2x RS-232
6	750-8216-005	Standard PFC200 (2x Ethernet, RS-232/485, CAN, CANopen, PROFIBUS DP Slave) with 1x RS-485, 1x RS-232, and 1x RS-485	Optional	750-8216-005	Standard PFC200 (2x Ethernet, RS-232/485, CAN, CANopen, PROFIBUS DP Slave) with 1x RS-485, 1x RS-232, and 1x RS-485
7	750-8216-006	Standard PFC200 (2x Ethernet, RS-232/485, CAN, CANopen, PROFIBUS DP Slave) with 1x RS-485, 2x RS-232, and 1x RS-485	Optional	750-8216-006	Standard PFC200 (2x Ethernet, RS-232/485, CAN, CANopen, PROFIBUS DP Slave) with 1x RS-485, 2x RS-232, and 1x RS-485
8	750-8216-007	Standard PFC200 (2x Ethernet, RS-232/485, CAN, CANopen, PROFIBUS DP Slave) with 1x RS-485, 1x RS-232, and 2x RS-485	Optional	750-8216-007	Standard PFC200 (2x Ethernet, RS-232/485, CAN, CANopen, PROFIBUS DP Slave) with 1x RS-485, 1x RS-232, and 2x RS-485
9	750-8216-008	Standard PFC200 (2x Ethernet, RS-232/485, CAN, CANopen, PROFIBUS DP Slave) with 1x RS-485, 2x RS-232, and 2x RS-485	Optional	750-8216-008	Standard PFC200 (2x Ethernet, RS-232/485, CAN, CANopen, PROFIBUS DP Slave) with 1x RS-485, 2x RS-232, and 2x RS-485
10	750-8216-009	Standard PFC200 (2x Ethernet, RS-232/485, CAN, CANopen, PROFIBUS DP Slave) with 1x RS-485, 1x RS-232, and 1x RS-485 (with 1x RS-232)	Optional	750-8216-009	Standard PFC200 (2x Ethernet, RS-232/485, CAN, CANopen, PROFIBUS DP Slave) with 1x RS-485, 1x RS-232, and 1x RS-485 (with 1x RS-232)
11	750-8216-010	Standard PFC200 (2x Ethernet, RS-232/485, CAN, CANopen, PROFIBUS DP Slave) with 1x RS-485, 2x RS-232, and 1x RS-485 (with 2x RS-232)	Optional	750-8216-010	Standard PFC200 (2x Ethernet, RS-232/485, CAN, CANopen, PROFIBUS DP Slave) with 1x RS-485, 2x RS-232, and 1x RS-485 (with 2x RS-232)
12	750-8216-011	Standard PFC200 (2x Ethernet, RS-232/485, CAN, CANopen, PROFIBUS DP Slave) with 1x RS-485, 1x RS-232, and 2x RS-485 (with 1x RS-232)	Optional	750-8216-011	Standard PFC200 (2x Ethernet, RS-232/485, CAN, CANopen, PROFIBUS DP Slave) with 1x RS-485, 1x RS-232, and 2x RS-485 (with 1x RS-232)
13	750-8216-012	Standard PFC200 (2x Ethernet, RS-232/485, CAN, CANopen, PROFIBUS DP Slave) with 1x RS-485, 2x RS-232, and 2x RS-485 (with 2x RS-232)	Optional	750-8216-012	Standard PFC200 (2x Ethernet, RS-232/485, CAN, CANopen, PROFIBUS DP Slave) with 1x RS-485, 2x RS-232, and 2x RS-485 (with 2x RS-232)
14	750-8216-013	Standard PFC200 (2x Ethernet, RS-232/485, CAN, CANopen, PROFIBUS DP Slave) with 1x RS-485, 1x RS-232, and 1x RS-485 (with 1x RS-232 and 1x RS-485)	Optional	750-8216-013	Standard PFC200 (2x Ethernet, RS-232/485, CAN, CANopen, PROFIBUS DP Slave) with 1x RS-485, 1x RS-232, and 1x RS-485 (with 1x RS-232 and 1x RS-485)
15	750-8216-014	Standard PFC200 (2x Ethernet, RS-232/485, CAN, CANopen, PROFIBUS DP Slave) with 1x RS-485, 2x RS-232, and 1x RS-485 (with 2x RS-232 and 1x RS-485)	Optional	750-8216-014	Standard PFC200 (2x Ethernet, RS-232/485, CAN, CANopen, PROFIBUS DP Slave) with 1x RS-485, 2x RS-232, and 1x RS-485 (with 2x RS-232 and 1x RS-485)
16	750-8216-015	Standard PFC200 (2x Ethernet, RS-232/485, CAN, CANopen, PROFIBUS DP Slave) with 1x RS-485, 1x RS-232, and 2x RS-485 (with 1x RS-232 and 2x RS-485)	Optional	750-8216-015	Standard PFC200 (2x Ethernet, RS-232/485, CAN, CANopen, PROFIBUS DP Slave) with 1x RS-485, 1x RS-232, and 2x RS-485 (with 1x RS-232 and 2x RS-485)
17	750-8216-016	Standard PFC200 (2x Ethernet, RS-232/485, CAN, CANopen, PROFIBUS DP Slave) with 1x RS-485, 2x RS-232, and 2x RS-485 (with 2x RS-232 and 2x RS-485)	Optional	750-8216-016	Standard PFC200 (2x Ethernet, RS-232/485, CAN, CANopen, PROFIBUS DP Slave) with 1x RS-485, 2x RS-232, and 2x RS-485 (with 2x RS-232 and 2x RS-485)



The PFC200 Controller is a compact PLC for the modular WAGO I/O System. Besides network and fieldbus interfaces, the controller supports all digital, analog and specialty modules found within the 750/753 Series.

Two ETHERNET interfaces and an integrated switch enable line topology wiring. An integrated Webserver provides user configuration options, while displaying PFC200 status information. Besides the processing industry and building automation, typical applications for the PFC200 include standard machinery and equipment control (e.g., packaging, bottling and manufacturing systems, as well as textile, metal and wood processing machines).

- Programming per IEC 61131-3
- Programmable with CODESYS V3.5 from Firmware Release 23, WAGO-I/O-PRO V2.3 or **e!COCKPIT** up to Firmware Release 22
  - Direct connection of WAGO's I/O modules
  - 2 x ETHERNET (configurable), RS-232/-485, CAN, CANopen, PROFIBUS DP Slave
  - Linux operating system with RT-Preempt patch
  - Configuration via CODESYS, **e!COCKPIT** or Web-Based Management user interface
  - Maintenance-free

### Connection data

Connection technology: communication/fieldbus	PROFIBUS: 1 x D-sub 9 socket; CANopen: 1 x D-sub 9 plug; Modbus (TCP, UDP): 2 x RJ-45; Modbus RTU: 1 x D-sub 9 socket; RS-232 serial interface: 1 x D-sub 9 socket; RS-485 interface: 1 x D-sub 9 socket
Connection technology: system supply	2 x CAGE CLAMP®
Connection technology: field supply	6 x CAGE CLAMP®
Connection type 1	System/field supply
Solid conductor	0.08 ... 2.5 mm <sup>2</sup> / 28 ... 14 AWG
Fine-stranded conductor	0.08 ... 2.5 mm <sup>2</sup> / 28 ... 14 AWG
Strip length	8 ... 9 mm / 0.31 ... 0.35 inches
Connection technology: device configuration	1 x Male connector; 4-pole

### Physical data

Width	112 mm / 4.409 inches
Height	100 mm / 3.937 inches
Depth	71.9 mm / 2.831 inches
Depth from upper-edge of DIN-rail	64.7 mm / 2.547 inches

### Mechanical data

Weight	260.7 g
Color	light gray
Housing material	Polycarbonate; polyamide 6.6
Conformity marking	CE

### Environmental requirements

Ambient temperature (operation)	0 ... +55 °C
Ambient temperature (storage)	-25 ... +85 °C
Protection type	IP20
Pollution degree	2 per IEC 61131-2
Operating altitude	without temperature derating: 0 ... 2000 m; with temperature derating: 2000 ... 5000 m (0.5 K/100 m); 5000 m (max.)
Relative humidity (without condensation)	95 %
Mounting position	any
Mounting type	DIN-35 rail
Vibration resistance	4g per IEC 60068-2-6
Shock resistance	15g per IEC 60068-2-27
EMC immunity to interference	per EN 61000-6-2, marine applications
EMC emission of interference	per EN 61000-6-3, marine applications
Exposure to pollutants	per IEC 60068-2-42 and IEC 60068-2-43
Fire load	2.911 MJ
Permissible H <sub>2</sub> S contaminant concentration at a relative humidity 75 %	10 ppm
Permissible SO <sub>2</sub> contaminant concentration at a relative humidity 75 %	25 ppm

### Commercial data

eCl@ss 10.0	27-24-26-07
eCl@ss 9.0	27-24-26-07
ETIM 8.0	EC000236
ETIM 7.0	EC000236
PU (SPU)	1 pcs
Packaging type	Box
Country of origin	DE
GTIN	4055143759809
Customs tariff number	8537109190

**Environmental Product Compliance**

CAS-No.	1303-86-2 1317-36-8 693-98-1 7439-92-1 79-94-7
REACH Candidate List Substance	2,2',6,6'-tetrabromo-4,4'-isopropylidenediphenol 2-methylimidazole Diboron trioxide Lead Lead monoxide Perfluorobutane sulfonic acid (PFBS) and its salts
RoHS Compliance Status	Compliant,With Exemption
RoHS Exemption	6(c) 7(a) 7(c)-I 7(c)-II
SCIP notification number (Austria)	b9fd5afa-0337-4021-8eca-e378fe47c970
SCIP notification number (Belgium)	2435620a-a05f-4cb8-ae93-324c3122fc51
SCIP notification number (Bulgaria)	d83ad98d-22ad-40fe-b550-71778e46eb23
SCIP notification number (Czech Republic)	cffe418e-2e41-436f-80a1-73ddc85fc981
SCIP notification number (Denmark)	cbd8f492-fdb2-43a9-ac34-10ffd93b9a2e
SCIP notification number (Finland)	0844fb3c-422c-401b-bf0a-d0436d8fe674
SCIP notification number (France)	7d18f8be-67fb-4ed0-b2a8-3275d95ad5ed
SCIP notification number (Germany)	1b0e5cda-b6c2-412b-bf8b-3622deefbcf2
SCIP notification number (Hungary)	df082563-983b-46d4-be43-fb5a224b3be8
SCIP notification number (Italy)	dbf0ec57-3037-41f7-9f30-931b065c9635
SCIP notification number (Netherlands)	84b1c473-df7f-4830-a056-d4f123ba8175
SCIP notification number (Poland)	a3c3560c-ad82-401a-b6cc-ebb7c853989e
SCIP notification number (Romania)	5b20b554-a0b6-441d-8c14-f084d53e9f8d
SCIP notification number (Sweden)	f7d11444-434f-4f38-86f1-7994bdaa17bc

**Approvals / Certificates**

**General approvals** **Declarations of conformity and manufacturer's declarations**

Approval	Standard	Certificate Name
EAC Brjansker Zertifizierungs- stelle	TP TC 020/2011	EAC RU C-DE.AM02. B.00087/19
KC National Radio Research Agency	Article 58-2, Clause 3	MSIP-REM-W43-PFC750
UL Underwriters Laboratories Inc. (ORDINARY LOCATI- ONS)	-	E175199

Approval	Standard	Certificate Name
EU-Declaration of Confor- mity WAGO GmbH & Co. KG	-	-
BSH Bundesamt fuer See- schifffahrt und Hydrogra- phie	-	1104
BV Bureau Veritas S.A.	Rules for class. of Steel Ships	66711/A0
DNV DNV GL SE	DNV-CG-0339,Aug.2021	TAA0000194
KR Korean Register of Ship- ping	-	KR HMB05880-AC001

**Approvals for marine applications**

Approval	Standard	Certificate Name
ABS American Bureau of Ship- ping	-	22-2219060

Approvals for marine applications		
LR Lloyds Register EMEA	-	LR22180952TA
RINA RINA Germany GmbH	-	ELE343521XG001

Approvals for hazardous areas



Approval	Standard	Certificate Name
ATEX TUEV Nord Cert GmbH	EN 60079-0	TUEV14ATEX148929X (II 3 G Ex ec IIC T4 Gc)
CCCEX CQST/CNEx	CNCA-C23-01	2020312310000213 (Ex ec IIC T4 Gc)
EAC Brjansker Zertifizierungsstelle	TP TC 012/2011	EAC RU C-DE.AM02.B.00163/19 (2Ex e IIC T4 Gc X)
IECEx TUEV Nord Cert GmbH	IEC 60079-0	IECEx TUN 14.0035 X (Ex ec IIC T4 Gc)
INMETRO TUV Rheinland do Brasil Ltda.	IEC 60079-0	TUV 12.1297 X
UKEx WAGO GmbH & Co. KG	EN 60079-0	UKCA_WA GO22UKEX003X_ec
UL Underwriters Laboratories Inc. (HAZARDOUS LOCATIONS)	UL 121201	E198726 Sec.1

Downloads

Environmental Product Compliance

Compliance Search	
Environmental Product Compliance 750-8216	<a href="#">↓</a>

Documentation

Manual			
WAGO Solution Builder <a href="#">↓</a>			
Cyber Security for Controller PFC100 / PFC200	V 1.2.0	pdf 8128.80 KB	<a href="#">↓</a>
Product Manual PFC200 G2 2ETH RS CAN DPS	1.12.0 / FW 26 27.11.2023	pdf 5211.39 KB	<a href="#">↓</a>
System Manual WAGO I/O System 750/753	V 3.3.3 29.08.2023	pdf 8512.61 KB	<a href="#">↓</a>
System Manual Series 750/753 <a href="#">↓</a>			
Product Manual OPC UA Mapping Editor	V 1.1.0 11.03.2022	pdf 3314.23 KB	<a href="#">↓</a>
OPC_UA Mapping Editor <a href="#">↓</a>			
Product Manual WAGO MODBUS Master Configurator	V 1.1.0	pdf 1761.59 KB	<a href="#">↓</a>
Product Manual Documentation WAGO Solution Builder	2.0.0 14.11.2023	pdf 11121.40 KB	<a href="#">↓</a>

System Description		
Overview on WAGO-I/O-SYSTEM 750 approvals	pdf 770.48 KB	<a href="#">↓</a>
Controller PFC100/200, General Product Information	pdf 578.66 KB	<a href="#">↓</a>

Tutorial			
Establish connection to a controller using SSH	1.0 05.08.2017	mp4 28368.02 KB	<a href="#">↓</a>
Set IP address with Ethernet Settings	3.0 18.12.2017	mp4 86272.82 KB	<a href="#">↓</a>

Bid Text			
750-8216	19.02.2019	xml 10.11 KB	<a href="#">↓</a>
750-8216	23.01.2019	docx 22.57 KB	<a href="#">↓</a>

Additional Information			
WAGO OPC UA Server	V 1.1.0 28.01.2021	pdf 1132.87 KB	<a href="#">↓</a>

Instruction Leaflet			
CCC Ex (Additional information)	26.04.2023	pdf 159.76 KB	<a href="#">↓</a>

## Application Notes

Application Note CoDeSys 2.3			
Application note for installing a MySQL-Server on a PFC-Controller	1.0.4 16.05.2019	zip 4392.22 KB	<a href="#">↓</a>
Application note Cloud Connectivity	2019-09-17 17.09.2019	zip 3973.74 KB	<a href="#">↓</a>
HART Tool Routing via ETHERNET with 750-820x/750-88x and CODESYS 2.3 (a116120)	1.0.0 22.03.2019	pdf 3798.36 KB	<a href="#">↓</a>
HART Tool Routing via PROFIBUS with 750-833 and 750-333 (a116140)	1.0.0 22.03.2019	pdf 5214.96 KB	<a href="#">↓</a>
Using the web visualization with Java™ runtime environment (JRE, JVM) 7 update 51 (7u51) (a500690)	1.2.4 26.02.2019	zip 4896.43 KB	<a href="#">↓</a>
Application Note PowerMeasurement_03 Library	19.01.2011 19.03.2012	zip 932.08 KB	<a href="#">↓</a>
Application Note: DMX_02	26.04.2017 26.04.2017	zip 733.43 KB	<a href="#">↓</a>
HVAC System Macros	10.03.2017 15.03.2019	zip 13252.92 KB	<a href="#">↓</a>
Application Note: Mp-Bus_03 Library	2020-08-14 14.08.2020	zip 513.66 KB	<a href="#">↓</a>
Connection of a Thermokon Thanos SR L MODBUS room control unit to the WAGO-I/O-SYSTEM	02.05.2013 13.05.2013	zip 305.89 KB	<a href="#">↓</a>
Anbindung der HKW-Elektronik Wetterprognose-Station WS-K xx T ModBus	1.1 07.07.2017	zip 762.78 KB	<a href="#">↓</a>
Application Note Scheduler_03.lib	20.05.2011 20.05.2011	zip 1717.92 KB	<a href="#">↓</a>
Application Note Connecting with an iPod Touch	30.03.2011 28.10.2011	zip 428.79 KB	<a href="#">↓</a>
GRUNDFOS GENibus interface, application note	20.03.2017 20.03.2017	zip 279.86 KB	<a href="#">↓</a>
Connection of Thermokon Multi-function room control units WRF 08	10.04.2019 10.04.2019	zip 855.84 KB	<a href="#">↓</a>

Application Note CoDeSys 2.3			
Connection of DMX devices to the WAGO-I/O-SYSTEM via the ArtNet-DMX STAGE-PROFI 1.1	11.01.2013 11.01.2013	zip 1450.63 KB	<a href="#">↓</a>
Connection of Thermokon Multi-function room control units WRF 06	10.04.2019 08.04.2016	zip 826.10 KB	<a href="#">↓</a>
Application Note for the 750-494 3-Phase Power Measurement Module	24.01.2014 11.11.2014	zip 1629.99 KB	<a href="#">↓</a>
Application Note: EnOcean_06 Library	30.11.2016 30.11.2016	zip 822.25 KB	<a href="#">↓</a>
Application Note for the 750-495 3-Phase Power Measurement Module	24.01.2014 24.01.2014	zip 1806.18 KB	<a href="#">↓</a>
Application Note Library WagoDatalogger_02	2020-05-20 20.05.2020	zip 1256.74 KB	<a href="#">↓</a>
Application Note Weather Station Elsner P03 Modbus	01.12.2011 28.10.2011	zip 269.09 KB	<a href="#">↓</a>
Application note: DALI 753-647 Configuration Interface	1.0.2 29.04.2019	zip 3032.71 KB	<a href="#">↓</a>
HLK-Anlagenmakros für TRIC	2015-07-10 10.07.2015	zip 74963.43 KB	<a href="#">↓</a>
Application Note Library ModuleAccess_01	05.01.2016 29.01.2016	zip 1001.22 KB	<a href="#">↓</a>
Anwendungshinweis für die Steuerung eines Icus robotlink	12.11.2015 12.11.2015	zip 1281.38 KB	<a href="#">↓</a>

Application Note e!COCKPIT			
e!COCKPIT application note installation MyS-QL-Server	1.0.3 09.09.2019	pdf 1868.46 KB	<a href="#">↓</a>
e!COCKPIT application note WagoAppCloud	2022-11-04 04.11.2022	zip 2678.52 KB	<a href="#">↓</a>
HART Tool Routing via ETHERNET with 750-820x and e!RUNTIME (a116130)	1.0.0 22.03.2019	pdf 2867.01 KB	<a href="#">↓</a>
SNMP Communication (a500850)	1.1.0 20.02.2020	zip 3743.05 KB	<a href="#">↓</a>

## CAD/CAE-Data

CAD data		CAE data	
2D/3D Models 750-8216	<a href="#">↓</a>	EPLAN Data Portal 750-8216	<a href="#">↓</a>
		ZUKEN Portal 750-8216	<a href="#">↓</a>

## Engineering-Software

Configuration and Commissioning Software			
WAGO-IO-PRO Demo-Version (759-912) / Serie 750, 758 und 762	V 2.3.9.68 17.02.2022	zip 122524.17 KB	<a href="#">↓</a>
(759-316) WAGO Ethernet Settings / Serie 750	06.18.01.01 02.09.2021	zip 26678.54 KB	<a href="#">↓</a>
WAGUpload	1.16.1.0 02.02.2022	zip 12111.45 KB	<a href="#">↓</a>

## Runtime Software

Firmware			
Image Update (SD Karte) PFC100/200 für Codesys V2.3 u. Elcockpit	V 22 SP1 12.12.2022	zip 205815.20 KB	<a href="#">↓</a>
PFC200, Firmware Update für CoDeSys V3.5	V 23 24.02.2023	zip 167985.38 KB	<a href="#">↓</a>
WUP Update (WAGUploadTool) PFC100/200 Codesys V2.3 u. Elcockpit	V 22 SP1 12.12.2022	zip 203580.70 KB	<a href="#">↓</a>

**Libraries**

Device Description File			
750-910; GSD files for PROFIBUS / 750, 752, 755, 758 and 767 Series	6.8 15.01.2023	zip 5322.44 KB	<a href="#">↓</a>
750-914; EDS file for CANopen / 750, 752 and 767 Series	XT 12.03.2021	zip 1728.38 KB	<a href="#">↓</a>

Library			
WagoConfigToolLIB	1.0.0 08.10.2013	pdf 340.92 KB	<a href="#">↓</a>
WagoLibLed	1.0.0	pdf 504.39 KB	<a href="#">↓</a>
WagoLibNetSnmpManager	1.1.0	pdf 1090.83 KB	<a href="#">↓</a>
WagoLibDiagnosticIDs	1.0.0	pdf 291.17 KB	<a href="#">↓</a>
WagoLibCpuUsage	1.0.0	pdf 259.51 KB	<a href="#">↓</a>
Library WagoLib-Cloud_02.lib	2.2.4 21.01.2020	zip 56.21 KB	<a href="#">↓</a>
WAGO_Datalogger_02.lib	2.7 20.05.2020	zip 662.90 KB	<a href="#">↓</a>

**1 Compatible Products**

**1.1 Optional Accessories**

**1.1.1 Cables and connectors**

**1.1.1.1 Connector plug**



**Item No.: 750-979/000-011**  
Connector ETHERNET; RJ-45; Cat. 6A; angled; Code T568A; AWG 22; Strain relief



**Item No.: 750-979/000-021**  
Connector ETHERNET; RJ-45; Cat. 6A; angled; Code T568A; AWG 24; Strain relief



**Item No.: 750-979/000-012**  
Connector ETHERNET; RJ-45; Cat. 6A; angled; Code T568B; AWG 22; Strain relief



**Item No.: 750-979/000-022**  
Connector ETHERNET; RJ-45; Cat. 6A; angled; Code T568B; AWG 24; Strain relief



**Item No.: 750-977/000-011**  
Connector ETHERNET; RJ-45; Cat. 6A; straight; Code T568A; AWG 22



**Item No.: 750-978/000-011**  
Connector ETHERNET; RJ-45; Cat. 6A; straight; Code T568A; AWG 22; Strain relief



**Item No.: 750-977/000-021**  
Connector ETHERNET; RJ-45; Cat. 6A; straight; Code T568A; AWG 24



**Item No.: 750-978/000-021**  
Connector ETHERNET; RJ-45; Cat. 6A; straight; Code T568A; AWG 24; Strain relief



**Item No.: 750-977/000-012**  
Connector ETHERNET; RJ-45; Cat. 6A; straight; Code T568B; AWG 22



**Item No.: 750-978/000-012**  
Connector ETHERNET; RJ-45; Cat. 6A; straight; Code T568B; AWG 22; Strain relief



**Item No.: 750-977/000-022**  
Connector ETHERNET; RJ-45; Cat. 6A; straight; Code T568B; AWG 24



**Item No.: 750-978/000-022**  
Connector ETHERNET; RJ-45; Cat. 6A; straight; Code T568B; AWG 24; Strain relief



**Item No.: 750-975**  
ETHERNET RJ-45 connector, IP20; ETHERNET 10/100 Mbit/s; for field assembly



**Item No.: 750-963**  
Fieldbus Connector CANopen; with D-sub female connector; 9-pole



**Item No.: 750-960**  
Fieldbus Connector PROFIBUS; with D-sub male connector; 9-pole

### 1.1.2 Communication

#### 1.1.2.1 Communication cable



**Item No.: 750-923**

Configuration cable; USB connector;  
Length: 2.5 m

**Item No.: 750-923/000-001**

Configuration cable; USB connector;  
Length: 5 m

### 1.1.3 DIN-rail

#### 1.1.3.1 Mounting accessories



**Item No.: 210-196**

Aluminum carrier rail; 35 x 8.2 mm; 1.6 mm thick; 2 m long; unslotted; similar to EN 60715; silver-colored

**Item No.: 210-198**

Copper carrier rail; 35 x 15 mm; 2.3 mm thick; 2 m long; unslotted; according to EN 60715; copper-colored

**Item No.: 210-508**

Steel carrier rail; 35 x 15 mm; 1.5 mm thick; 2 m long; slotted; galvanized; similar to EN 60715; silver-colored

**Item No.: 210-197**

Steel carrier rail; 35 x 15 mm; 1.5 mm thick; 2 m long; slotted; similar to EN 60715; silver-colored



**Item No.: 210-506**

Steel carrier rail; 35 x 15 mm; 1.5 mm thick; 2 m long; unslotted; galvanized; similar to EN 60715; silver-colored

**Item No.: 210-114**

Steel carrier rail; 35 x 15 mm; 1.5 mm thick; 2 m long; unslotted; similar to EN 60715; silver-colored

**Item No.: 210-118**

Steel carrier rail; 35 x 15 mm; 2.3 mm thick; 2 m long; unslotted; according to EN 60715; silver-colored

**Item No.: 210-115**

Steel carrier rail; 35 x 7.5 mm; 1 mm thick; 2 m long; slotted; according to EN 60715; "Hole width 18 mm; silver-colored



**Item No.: 210-112**

Steel carrier rail; 35 x 7.5 mm; 1 mm thick; 2 m long; slotted; according to EN 60715; "Hole width 25 mm; silver-colored

**Item No.: 210-504**

Steel carrier rail; 35 x 7.5 mm; 1 mm thick; 2 m long; slotted; galvanized; according to EN 60715; silver-colored

**Item No.: 210-113**

Steel carrier rail; 35 x 7.5 mm; 1 mm thick; 2 m long; unslotted; according to EN 60715; silver-colored

**Item No.: 210-505**

Steel carrier rail; 35 x 7.5 mm; 1 mm thick; 2 m long; unslotted; galvanized; according to EN 60715; silver-colored

### 1.1.4 Marking

#### 1.1.4.1 Group marker carrier



**Item No.: 750-107**

Group marker carrier

#### 1.1.4.2 Marker



**Item No.: 2009-145/000-006**

Mini-WSB Inline; for Smart Printer; 1700 pieces on roll; stretchable 5 - 5.2 mm; plain; snap-on type; blue

**Item No.: 2009-145/000-007**

Mini-WSB Inline; for Smart Printer; 1700 pieces on roll; stretchable 5 - 5.2 mm; plain; snap-on type; gray

**Item No.: 2009-145/000-023**

Mini-WSB Inline; for Smart Printer; 1700 pieces on roll; stretchable 5 - 5.2 mm; plain; snap-on type; green

**Item No.: 2009-145/000-012**

Mini-WSB Inline; for Smart Printer; 1700 pieces on roll; stretchable 5 - 5.2 mm; plain; snap-on type; orange



**Item No.: 2009-145/000-005**

Mini-WSB Inline; for Smart Printer; 1700 pieces on roll; stretchable 5 - 5.2 mm; plain; snap-on type; red

**Item No.: 2009-145/000-024**

Mini-WSB Inline; for Smart Printer; 1700 pieces on roll; stretchable 5 - 5.2 mm; plain; snap-on type; violet

**Item No.: 2009-145**

Mini-WSB Inline; for Smart Printer; 1700 pieces on roll; stretchable 5 - 5.2 mm; plain; snap-on type; white

**Item No.: 2009-145/000-002**

Mini-WSB Inline; for Smart Printer; 1700 pieces on roll; stretchable 5 - 5.2 mm; plain; snap-on type; yellow



**Item No.: 248-501/000-006**

Mini-WSB marking card; as card; not stretchable; plain; snap-on type; blue

**Item No.: 248-501/000-007**

Mini-WSB marking card; as card; not stretchable; plain; snap-on type; gray

**Item No.: 248-501/000-023**

Mini-WSB marking card; as card; not stretchable; plain; snap-on type; green

**Item No.: 248-501/000-017**

Mini-WSB marking card; as card; not stretchable; plain; snap-on type; light green



1.1.4.2 Marker



**Item No.: 248-501/000-012**  
Mini-WSB marking card; as card; not stretchable; plain; snap-on type; orange

**Item No.: 248-501/000-005**  
Mini-WSB marking card; as card; not stretchable; plain; snap-on type; red

**Item No.: 248-501/000-024**  
Mini-WSB marking card; as card; not stretchable; plain; snap-on type; violet

**Item No.: 248-501**  
Mini-WSB marking card; as card; not stretchable; plain; snap-on type; white



**Item No.: 248-501/000-002**  
Mini-WSB marking card; as card; not stretchable; plain; snap-on type; yellow

1.1.4.3 Marker carrier



**Item No.: 750-103**  
Group marker carrier

1.1.5 Memory card

1.1.5.1 Memory card



**Item No.: 758-879/000-2108**  
Memory Card SD; pSLC-NAND; 8 GB; Temperature range: -40 to 90°C

**Item No.: 758-879/000-001**  
Memory Card SD; SLC-NAND; 2 GByte; Temperature from -40 to 90 °C

1.1.6 Shield termination

1.1.6.1 Shield clamping saddles



**Item No.: 790-108**  
Shield clamping saddle; 11 mm wide; diameter of compatible conductor; 3 ... 8 mm

**Item No.: 790-208**  
Shield clamping saddle; 12.4 mm wide; 3 ... 8 mm

**Item No.: 790-116**  
Shield clamping saddle; 19 mm wide; diameter of compatible conductor; 7 ... 16 mm

**Item No.: 790-216**  
Shield clamping saddle; 21.8 mm wide; 6 ... 16 mm



**Item No.: 790-124**  
Shield clamping saddle; 27 mm wide; diameter of compatible conductor; 6 ... 24 mm

**Item No.: 790-220**  
Shield clamping saddle; 30 mm wide; 6 ... 20 mm

**Item No.: 790-140**  
Shield clamping saddle; diameter of compatible conductor

1.1.7 Software

1.1.7.1 Basic version



**Item No.: 2759-101/1110-4000**  
e!COCKPIT; Buy-out License

**Item No.: 2759-101/1110-2005**  
e!COCKPIT; Multi-User License; 05 pcs

**Item No.: 2759-101/1110-2010**  
e!COCKPIT; Multi-User License; 10 pcs

**Item No.: 2759-101/1110-2015**  
e!COCKPIT; Multi-User License; 15 pcs



**Item No.: 2759-101/1110-2020**  
e!COCKPIT; Multi-User License; 20 pcs

**Item No.: 2759-101/1110-3000**  
e!COCKPIT; Site License

**Item No.: 2759-101/1110-2002**  
e!COCKPIT; Workstation License

**Item No.: 759-333**  
WAGO-I/O-PRO



**Item No.: 759-333/000-923**  
WAGO-I/O-PRO; USB-Set

1.1.7.2 Software Application



**Item No.: 2759-120/1121-1000**  
e!COCKPIT MTP; Single License; Online activation

**Item No.: 2759-245/211-1000**  
Library Controller Redundancy Master; Single License; Online activation

**Item No.: 2759-208/211-1000**  
Library MTP; Single License; Online activation

**Item No.: 2759-203/211-1000**  
Library Power Plant Control; VDE-AR-N 4110 / 4120; Single License; Online activation

1.1.8 System enclosure

1.1.8.1 System enclosure



**Item No.: 850-825**  
IP65 enclosure; Aluminium (RAL 7032); WxHxD (160x100x160 mm); 9 x M12, 4 x M20

**Item No.: 850-826**  
IP65 enclosure; Aluminium (RAL 7032); WxHxD (240x100x160 mm); 4 x M20, 4 x M16, 14 x M12 cable grip

**Item No.: 850-827**  
IP65 enclosure; Aluminium (RAL 7032); WxHxD (320x100x160 mm); 4 x M20, 8 x M16, 17 x M12 cable grip

**Item No.: 850-828**  
IP65 enclosure; Aluminium (RAL 7032); WxHxD (480x100x160 mm); 4 x M20, 10 x M16, 35 x M12 cable grip



**Item No.: 850-826/002-000**  
IP65 enclosure; Aluminium (RAL 7035); WxHxD (240x100x160 mm); 4 x M20, 4 x M16, 14 x M12 cable grip

**Item No.: 850-827/002-000**  
IP65 enclosure; Aluminium (RAL 7035); WxHxD (320x100x160 mm); 4 x M20, 8 x M16, 17 x M12 cable grip

**Item No.: 850-828/002-000**  
IP65 enclosure; Aluminium (RAL 7035); WxHxD (480x100x160 mm); 4 x M20, 10 x M16, 35 x M12 cable grip

**Item No.: 850-834**  
IP65 enclosure; Polyester (RAL 7032); WxHxD (164x100x164 mm); 9 x M12, 4 x M20



**Item No.: 850-835**  
IP65 enclosure; Polyester (RAL 7032); WxHxD (244x100x164 mm); 4 x M20, 4 x M16, 14 x M12 cable grip

**Item No.: 850-836**  
IP65 enclosure; Polyester (RAL 7032); WxHxD (324x100x164 mm); 4 x M20, 8 x M16, 17 x M12 cable grip

**Item No.: 850-814/002-000**  
IP65 enclosure; Sheet steel (RAL 7035); WxHxD (200x120x200 mm); without flange plate

**Item No.: 850-815/002-000**  
IP65 enclosure; Sheet steel (RAL 7035); WxHxD (300x120x200 mm); without flange plate



**Item No.: 850-816/002-000**  
IP65 enclosure; Sheet steel (RAL 7035); WxHxD (400x120x200 mm); without flange plate

**Item No.: 850-817/002-000**  
IP65 enclosure; Sheet steel (RAL 7035); WxHxD (600x120x200 mm); without flange plate