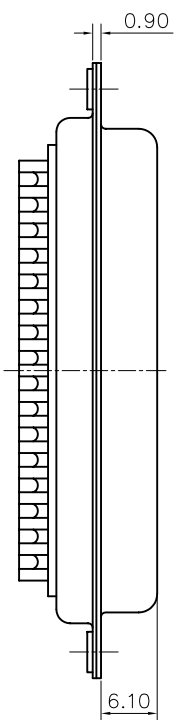
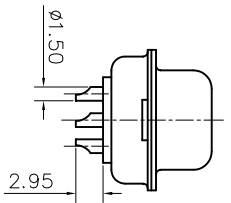
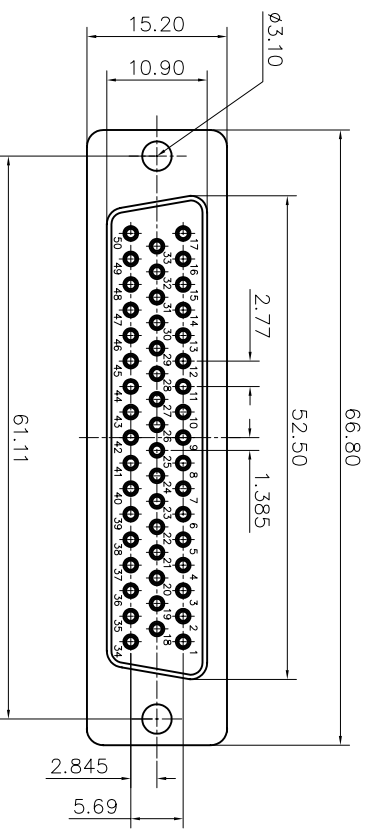


This document is the property of Amphenol Corporation and is intended for the specific condition that it is not to be duplicated, reproduced or used, in whole or in part, for any other purpose without the prior consent of Amphenol Corporation. No right is granted to make copies of this document or to use any information in this document.



Customer drawing

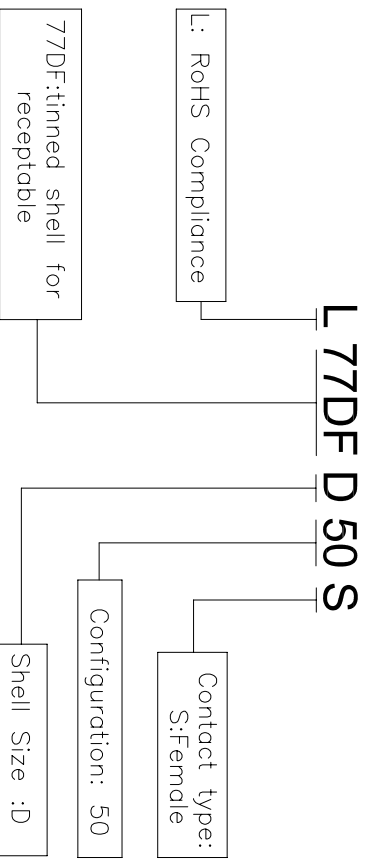
REVISIONS				
S/N	ECN	DESCRIPTION	DATE	APPROVED
1		Release manufacturing drawing	01/02/08	IP

D-SUB TECHNICAL DATA

SHELL : Steel 2.5um (100u") min tin over 1.25um (50u") min nickel
 BODY : Glass filled thermoplastic.
 Flame retardant to UL94 V-0 Color Black
 CONTACTS : Copper alloy
 0.4um (15u") min gold over 1.25um (50u") min nickel
 ELECTRICAL : Voltage rating : 1000 V RMS at 50 Hz
 Current rating 7.5A.
 Insulation resistance >5000 M Ohms
 Contact resistance 20 mOhms max.
 CLIMATIC : Temperature range -55 °C up to 125°C.
 Damp heat 56 days(40 °C-95% HR)
 MARKING : Amphenol...(Series No.)
 Commercial reference
 Manufacturing date

PRODUCT CODE

L 77DF D 50 S



DIMENSIONS SPECIFIED		APPROVAL		DATE	
TOLERANCES	U.S.	DRAWN	Checked and	01/02/08	
	METRIC	CHECKED	10k. verified	01/02/08	
			CHECKED		
X	±0.50				
XX	±0.30				
XXX	±0.20				
FACTORS					
ANGLES	S				
FOR MATERIALS AND FINISHES SEE MATERIALS AND FINISHES					
REMOVE SHARP EDGES					
DIMENSIONS					
TYPICAL					
MATERIAL					
DRAWING FILE : M77DFD50S					
ANGLE OF PROJECTION					
TITLE					
Machined contacts connector, DF series					
SIZE	DRAWING NO.	REV.			
A4	M L77DFD50S	1			
SCALE	NONE	SHEET 1 OF 1			