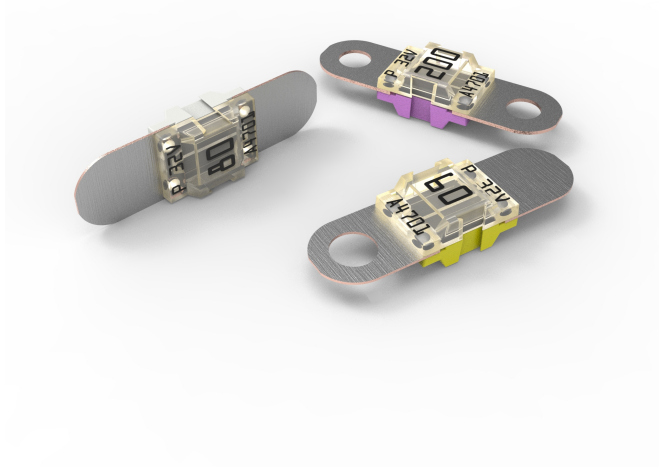


# BF1

## Bolt-down Fuse Rated 32V



### Specifications

|   |   |                |
|---|---|----------------|
| <b>Voltage Rating:</b>                        | 32 VDC                                      |                |
| <b>Interrupting Rating:</b>                   | 30A:  | 1000A @ 32 VDC |
|   | 40 A - 150 A:                               | 2000A @ 32 VDC |
|   | 200 A:                                      | 1500A @ 32 VDC |
| <b>Recommended Environmental Temperature:</b> | -40°C to +125°C                             |                |
| <b>Terminals Material:</b>                    | Tin plated Copper                           |                |
| <b>Opaque Housing Material:</b>               | PET-GF33 (U.L. 94 Flammability rating – V0) |                |
| <b>Clear Housing Material:</b>                | PES (U.L. 94 Flammability rating – HB)      |                |
| <b>Mounting Torque M5:</b>                    | 4.5 Nm +/- 1Nm                              |                |
| <b>Mounting Torque M6:</b>                    | 6.0 Nm +/- 1Nm                              |                |
| <b>Complies with:</b>                         | UL 248 Special Purpose Fuse                 |                |
| <b>Refers To:</b>                             | ISO 8820-5:2015                             |                |

### Description

BF1 32V fuses use Slo-Blo® technology to protect high-current wiring harnesses. Use the 150 A and 200 A fuses only for short circuit protection.

### Applications

- Cars
- Trucks
- SUVs
- Offroad vehicles
- Buses
- Watercraft as approved by Littelfuse®

### Features & Benefits

- Color coding indicates ampere rating
- High-contrast ampere rating stamps aid identification
- Available with one, two or no mounting holes
- Transparent cover make it easier to see when fuse blow








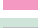
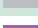

### Ordering Information

| Part Number   | Ratings  | Package Size | Bolt Size | Bolt Hole Qty |
|---------------|----------|--------------|-----------|---------------|
| 153.5631.xxx2 | 30A-200A | 1000         | M5        | 2             |
| 153.5631.xxx1 | 30A-200A | 10           | M5        | 2             |
| 153.7010.xxx2 | 30A-150A | 1000         | M6        | 2             |
| 153.7000.xxx2 | 150-200A | 500          | M6        | 2             |
| 153.0010.xxx2 | 60A-125A | 1000         | M6        | 1             |
| 153.0020.xxx2 | 30A-200A | 500          | --        | 0             |

# BF1

## Bolt-down Fuse Rated 32V

### Ratings

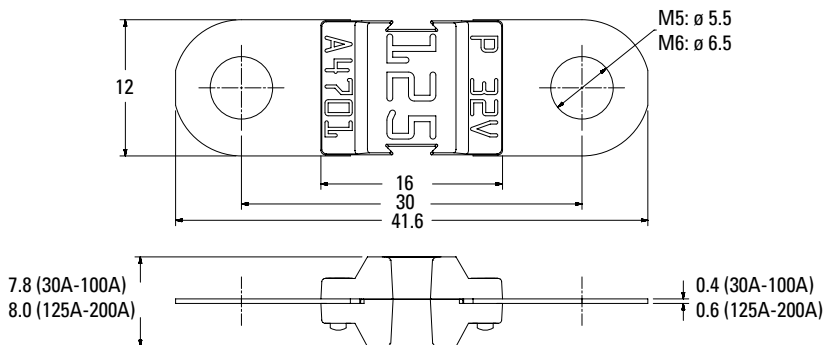
| Part Number                | Current Rating (A) | Housing Material Color  | Test Cable Size (mm <sup>2</sup> ) | Typ. Voltage Drop (mV) | Typ. Cold Resistance (mΩ) | Typ. I <sup>2</sup> t (A <sup>2</sup> s) |
|----------------------------|--------------------|---|------------------------------------|------------------------|---------------------------|--|
| 153.xxxx.530_              | 30                 |  | 2.5                                | 105                    | 2.70                      | 5 100                                    |
| 153.xxxx.540_              | 40                 |  | 4                                  | 90                     | 1.56                      | 6 800                                    |
| 153.xxxx.550_              | 50                 |  | 6                                  | 80                     | 1.03                      | 6 900                                    |
| 153.xxxx.560_              | 60                 |  | 6                                  | 75                     | 0.75                      | 16 200                                   |
| 153.xxxx.570_              | 70                 |  | 10                                 | 70                     | 0.64                      | 22 000                                   |
| 153.xxxx.580_              | 80                 |  | 10                                 | 70                     | 0.55                      | 25 600                                   |
| 153.xxxx.610_              | 100                |  | 16                                 | 70                     | 0.44                      | 42 500                                   |
| 153.xxxx.612_              | 125                |  | 25                                 | 70                     | 0.34                      | 62 500                                   |
| 153.xxxx.615_ <sup>1</sup> | 150                |  | 25                                 | 70                     | 0.29                      | 83 400                                   |
| 153.xxxx.620_ <sup>3</sup> | 200                |  | 35                                 | 70                     | 0.24                      | 126 000                                  |

Note 1: Short Circuit Protector only

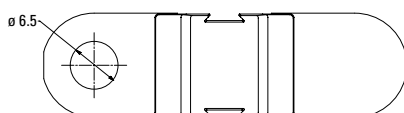
The typical I<sup>2</sup>t is an average value calculated from the breaking capacity tests by using the melting time before the arcing occurs.

### Dimensions

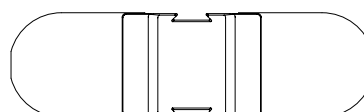
Dimensions in mm for reference only.  
See outline drawing for dimensions and tolerances.



1 Hole M6 version



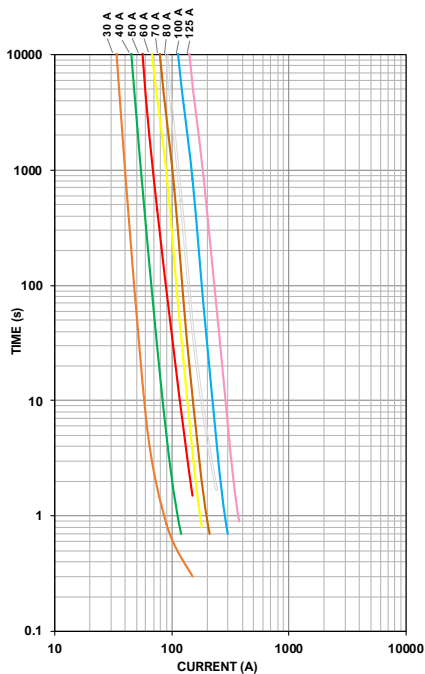
No Holes versions



# BF1

## Bolt-down Fuse Rated 32V

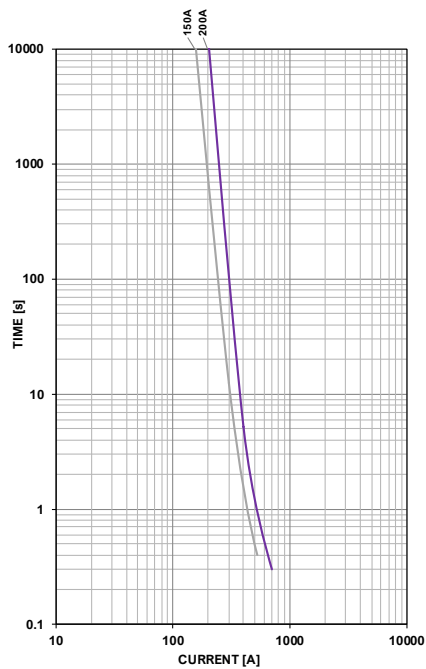
### Time-Current Characteristic Curves



### Time-Current Characteristics

#### Time-Current Characteristics

| % of Rating | Opening Time Min / Max (s) |             |
|-------------|----------------------------|-------------|
|             | 30-125A                    | 150-200 A   |
| 75          | - / -                      | 360,000 / ∞ |
| 100         | 360,000 / ∞                | - / -       |
| 110         | 14,400 / ∞                 | - / -       |
| 150         | 90 / 3,600                 | - / -       |
| 200         | 3 / 100                    | 1 / 15      |
| 300         | 0.3 / 3                    | - / -       |
| 350         | - / -                      | 0.3 / 5     |
| 500         | 0.1 / 1                    | - / -       |
| 600         | - / -                      | 0.1 / 1     |



# BF1

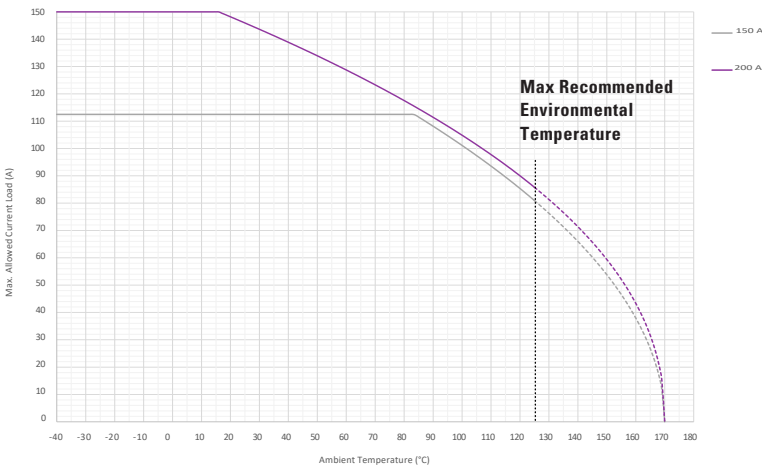
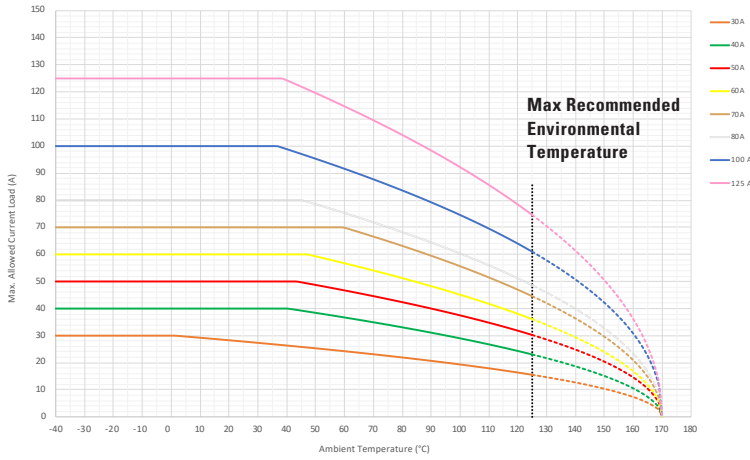
## Bolt-down Fuse Rated 32V

### Typical Derating of Fuse Melting Element

Temperature Security Margin is 20%

Wire Cross Section And Fixture Test Set Up Refer To ISO 8820-3

Please Contact Littelfuse® For Details Regarding Derating Test Set Up



### Temperature Table

|              | max. allowed current load (A) at ambient temperature (typical derating) |     |      |      |      |       |       |
|--------------|---|-----|------|------|------|-------|-------|
|              | -40°C   | 0°C | 20°C | 65°C | 85°C | 110°C | 125°C |
| <b>30 A</b>  | 30  | 30  | 28   | 24   | 21   | 18    | 16    |
| <b>40 A</b>  | 40  | 40  | 40   | 36   | 32   | 27    | 23    |
| <b>50 A</b>  | 50  | 50  | 50   | 46   | 41   | 35    | 30    |
| <b>60 A</b>  | 60  | 60  | 60   | 55   | 50   | 42    | 36    |
| <b>70 A</b>  | 70  | 70  | 70   | 68   | 61   | 51    | 45    |
| <b>80 A</b>  | 80  | 80  | 80   | 74   | 66   | 56    | 49    |
| <b>100 A</b> | 100   | 100 | 100  | 90   | 81   | 70    | 61    |
| <b>125 A</b> | 125   | 125 | 125  | 112  | 101  | 86    | 75    |
| <b>150 A</b> | 113   | 113 | 113  | 113  | 111  | 94    | 81    |
| <b>200 A</b> | 150   | 150 | 148  | 126  | 115  | 98    | 86    |

Derating curves may change depending on the final condition of the application (terminals characteristics, wire size etc..). Please ask Littelfuse® for more information.