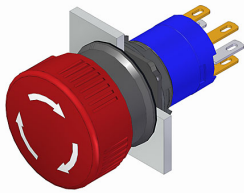


EAO – Your Expert Partner for Human Machine Interfaces

51-253.022 - Stop switch complete

51-253.022 - Stop switch complete



Attention: The preview is based on a sample product. This can differ from your current configuration.

Mounting

Mounting cut-out Ø 16 mm
Design raised

Front

Front dimension Ø 24.5 mm
Front shape round

Other Attributes

Weight 0,011 kg

Operating-/Indication part

Lens material Plastic
Lens colour red
Lens profile Mushroom
Lens optics opaque
Lens illumination non-illuminative

IP-Rating

Front protection IP65

Connection Method

Terminal Solder 2.8 x 0.5 mm

Actuator

Switching action Maintained

Switching element

Switching system Snap-action switching element
Contacts 1 NC + 1 NO
Switching current 5 A
Contact material gold-plated silver
Switching voltage 250 V AC

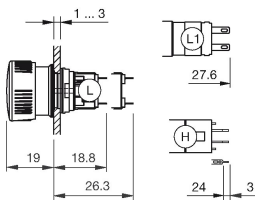
Function

Stop switch

EAO – Your Expert Partner for Human Machine Interfaces

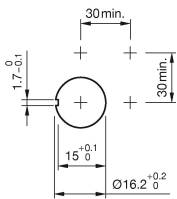
51-253.022 - Stop switch complete

Dimensions

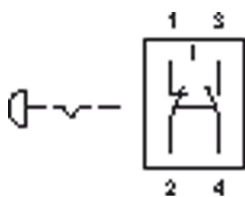


H = Universal terminal 2.0 x 0.5 mm

Mounting cut-outs



Wiring diagram



Additional information

Marking arrows

If the anti-twist ring is not used the panel thickness increases to 4 mm

Legend

Contacts: NC = Normally closed, NO = Normally open

Switching action: C = Maintained