



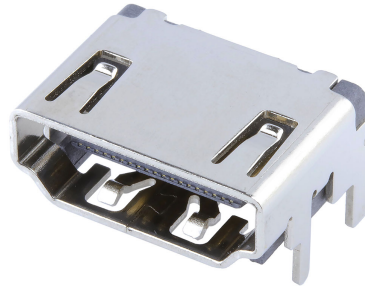
Part Number : [2086581003](#)

Product Description : HDMI v2.1 Receptacle, Right-Angle, Gold Flash Plating, 2.70mm Tab, Tape and Reel, 19 Circuits

Series Number : 208658

Status : Active

Product Category : I/O Connectors



Documents & Resources

Drawings

[Drawing 2086581003_sd.pdf](#)

[Packaging Design Drawing 2086581003PK-000.pdf](#)

3D Models and Design Files

[3D Model 2086581003_stp.zip](#)

Specifications

[Product Specification 2086581003PS-000.pdf](#)

[Test Summary 2086581003TS-000.pdf](#)

Product Environment Compliance

Compliance

China RoHS	Not Reviewed
EU ELV	Not Reviewed
Low-Halogen Status	Not Reviewed
REACH SVHC	Not Reviewed
EU RoHS	Not Reviewed

Multiple Part Product Compliance Statements

- Eu RoHS
- REACH SVHC
- Low-Halogen

Multiple Part Industry Compliance Documents

- IPC 1752A Class C
- IPC 1752A Class D
- Molex Product Compliance Declaration

- IEC-62474

- chemSHERPA (xml)

EU RoHS Certificate of Compliance

Part Details

General

Status	Active
Category	I/O Connectors
Series	208658
Description	HDMI v2.1 Receptacle, Right-Angle, Gold Flash Plating, 2.70mm Tab, Tape and Reel, 19 Circuits
Application	Wire-to-Board
Component Type	Receptacle
Product Family	HDMI Connectors
Product Name	HDMI
Standard	HDMI 2.1
Type	A
UPC	195842860438

Electrical

Current - Maximum per Contact	0.5A
Shield Type	Full Shield
Shielded	Yes
Voltage - Maximum	40V DC

Physical

Circuits (Loaded)	19
Circuits (maximum)	19
Color - Resin	Black
Durability (mating cycles max)	10000
Gender	Female
Keying to Mating Part	None
Lock to Mating Part	Yes
Material - Metal	Copper Alloy

Material - Plating Mating	Gold
Material - Plating Termination	Gold
Material - Resin	High Temperature Thermoplastic
Mounting Style	Top-Mount
Net Weight	3.600/g
Number of Rows	2
Orientation	Right Angle
Packaging Type	Embossed Tape on Reel
Panel Mount	Without Flange
PCB Locator	Yes
PCB Retention	Yes
PCB Thickness - Recommended	2.20mm
Pitch - Mating Interface	0.50mm
Pitch - Termination Interface	0.50mm
Plating min - Mating	0.025µm
Polarized to Mating Part	Yes
Polarized to PCB	Yes
Ports	1
Temperature Range - Operating	-40° to +85°C
Termination Interface Style	Surface Mount

Mates With / Use With

Mates with Part(s)

Description	Part Number
Mates With	HDMI Plug/Cable