

SFP 2xN Combo

Product Specification S6009C Rev 2.4

Amphenol

Now you're connected!

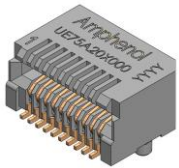
About Amphenol

Commercial Products

Amphenol's commercial connector products are used in a variety of end user applications including networking, telecom, server & computer, storage & HDD, consumer electronics and entertainment, professional audio & Industrial & Military/Aerospace.

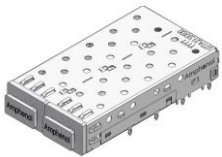
Related Products

SFP 1x1 Connector

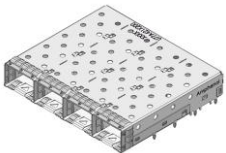


SFP 20 POSITION CONNECTOR

SFP 1xN



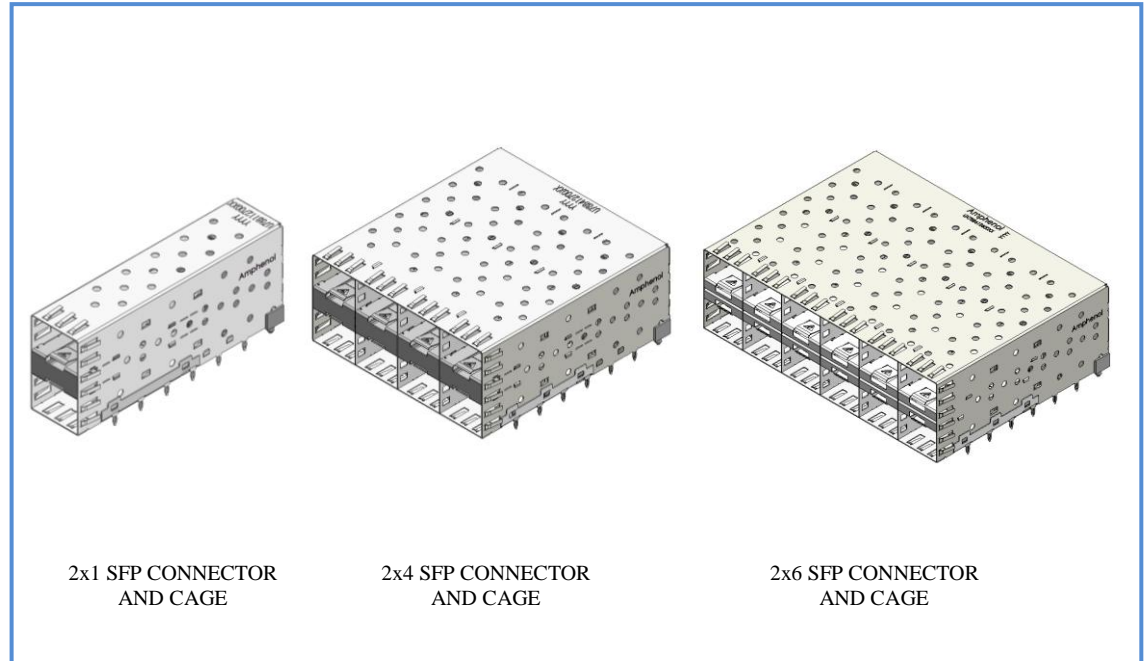
1x2 SFP CAGE WITH DUST COVER



1x4 SFP CAGE WITH ENHANCED EMI TABS



1x6 SFP CAGE WITH LIGHT PIPES



2x1 SFP CONNECTOR AND CAGE

2x4 SFP CONNECTOR AND CAGE

2x6 SFP CONNECTOR AND CAGE

Overview

This short form Product Specification defines the general usage and performance requirements for Amphenol's U78 and UE78 series of 2xN connector and cage combos.

The interconnect system comprises of a SFP transceiver connector and cage assembly with press-fit pin construction, complying with MSA Agreement INF-8074i.

Availability: 2x1, 2x2, 2x4, 2x6, and 2x8 combos in production.

Usage

Designed to handle data rates up to 6 Gbps
Industry-compatible mating module

Applications

- Network switches
- Routers
- Servers
- Storage devices

General Requirements

RoHS compliant

Footprint compatible with other industry suppliers (15 press fit pins for cage)

Press fit cage and connector combo for minimum 1.57±10% mm (0.0625") PCB thickness

Insertion and extraction tools available (consult factory)

Combos are tray packaged

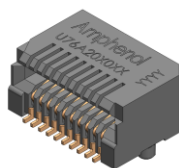
Now you're connected!

About Amphenol Commercial Products

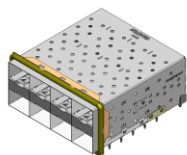
Amphenol's commercial connector products are used in a variety of end user applications including networking, telecom, server & computer, storage & HDD, consumer electronics and entertainment, professional audio & Industrial & Military/Aerospace.

Related Products

SFP+



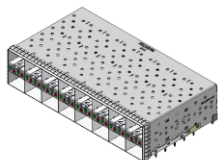
20 POSITION CONNECTOR



2x4 CONNECTOR AND CAGE WITH ELASTOMERIC GASKET



1x6 CAGE WITH ELASTOMERIC GASKET & LIGHT PIPES



2x8 CONNECTOR AND CAGE WITH EMI SPRING FINGERS AND LIGHT PIPES

Dust cover for front face is available (bulk packed)
 Temperature rating -55° C to 85° C
 Industry standard EIA-364
 1000 N maximum insertion force for 2x1 combo
 Proper support for connector and cage required during insertion into PCB
 Extraction tool required for removing the combo from PCB (consult factory)

Electrical Characteristics

Hot swappable
 Allows module swapping
 Operating voltage: 3.3V at 0.5A maximum
 Cages include spring contact for superior EMI grounding
 Contact resistance: 35 mΩ max
 Insulation resistance: 1000MΩ minimum
 DWV: 300V AC
 Differential impedance: 100Ω

Mechanical Characteristics

2xN 20-position (N=1 and 4), 0.8mm pitch press fit termination receptacle
 Card entry slot accepts 1.0mm-thick integrated circuit cards.
 Accepts multiple transceivers per INF-8074i
 Durability of 250 mating cycles for 30 micro-inches gold versions.

Material Requirements

Unless otherwise specified, the materials for each component shall be:

- RoHS compliant on connector and cage
- Electrical connector chicklets
 - Contact area to have 15μ" and 30μ" gold option over 50μ" nickel on mating area
 - Press fit termination to have 100-300μ" tin-lead over 50μ" nickel
 - Molding body LCP
- Housings: Glass-reinforced, thermoplastic, UL 94 V-0 rated
- Cage: Copper alloy, Tin over nickel or nickel only plating
- Spring clip: Copper alloy, nickel plating
- Optional thermoplastic dust covers.

Operating Temperature = -55°C to +85°C

Storage Temperature = -55°C to +105°C

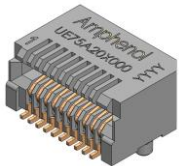
Now you're connected!

About Amphenol Commercial Products

Amphenol's commercial connector products are used in a variety of end user applications including networking, telecom, server & computer, storage & HDD, consumer electronics and entertainment, professional audio & Industrial & Military/Aerospace.

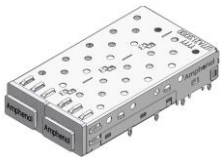
Related Products

SFP 1x1 Connector

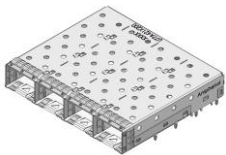


SFP 20 POSITION CONNECTOR

SFP 1xN



1x2 SFP CAGE WITH DUST COVER



1x4 SFP CAGE WITH ENHANCED EMI TABS

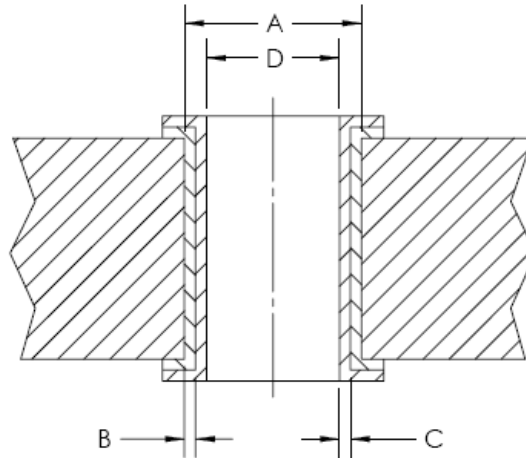


1x6 SFP CAGE WITH LIGHT PIPES

Assembly Instructions

Compliant Pin Holes must be drilled and plated through to specific dimensions to prevent damage during placement of cage assembly on the PCB and to ensure a good connection. See table below.

Printed Circuit Board Hole Specifications



| Drilled Hole Diameter (mm) (A) | Finished Hole Diameter ±0.05 mm (D) |
|--------------------------------|-------------------------------------|
| 0.55 - 0.59 | 0.46 |
| 0.69 - 0.73 | 0.60 |
| 1.14 - 1.18 | 1.05 |

Copper Plating Thickness (B): 0.025-0.050mm

Final Plating Thickness (C): 0.010-0.025mm

Available Documents

Drawing Numbers:

- U78-B1126-00XX1 SFP 2x1 Multi-Port (RoHS 5)
- U78-BX126-00XX1 SFP 2xN Multi-Port (RoHS 5)
- UE78-B1126-00XX1 SFP2X1 Multi-Port (RoHS 6)
- UE78-B1127-00XX1 SFP2X1 Multi-Port (RoHS 6)
- UE78-BX127-00XX1 SFP2XN Multi-Port (RoHS 6)

Contact factory or Authorized Amphenol representative for alternate configurations