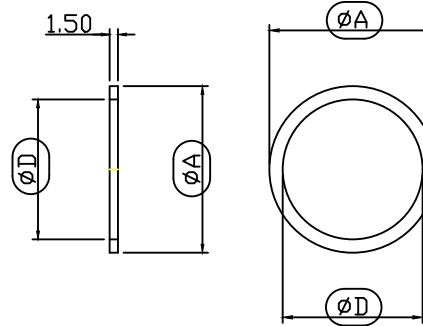


**SPECIAL NOTE - 1/4"NPT
SECTION 2.00mm**



THREAD METRIC	ØD	ØA	PART No
M6	6	12	HA-001
M8	8	14	HA-002
M10	10	18.6	HA-003
M16	16.5	25.0	HA-0011
M20	20.5	28.7	HA-0012
M25	25.5	36.0	HA-0013
M32	32.5	42.5	HA-0014
M40	40.5	52.0	HA-0015
M50	50.5	65.0	HA-0016
M63	63.5	79.4	HA-0017
M75	75.5	90.5	HA-0018
M90	90.5	114.3	HA-0081
M100	100.5	114.3	HA-0082

THREAD NPT	ØD	ØA	PART No
1/4"	14.45	25.4	HA-0040
3/8"	17.5	22.2	HA-0041
1/2"	22.0	30.0	HA-0042
3/4"	27.2	38.0	HA-0043
1"	33.7	46.0	HA-0044
1.1/4"	42.8	55.5	HA-0045
1.1/2"	48.6	58.8	HA-0046
2"	60.9	79.4	HA-0047
2.1/2"	74.0	90.5	HA-0048
3"	90.5	114.3	HA-0049

THREAD PG	ØD	ØA	PART No
7	13.0	22.0	HA-0020
9	16.5	25.0	HA-0021
11	19.0	27	HA-0022
13.5	20.7	29.4	HA-0023
16	23.0	33.0	HA-0024
21	29.0	35.5	HA-0025
29	37.5	52.0	HA-0026
36	47.5	65.0	HA-0027
42	54.5	65.0	HA-0028
48	60.0	79.4	HA-0029

THREAD ET	ØD	ØA	PART No
5/8"	16.5	25.0	HA-0031
3/4"	20.5	28.7	HA-0032
1"	25.5	36.0	HA-0033
1.1/4"	32.5	42.5	HA-0034
1.1/2"	40.5	52.0	HA-0035
2"	50.5	65.0	HA-0036
2.1/2"	63.5	79.4	HA-0037
3"	75.5	90.5	HA-0038

For NPSM, BSPP, BSPT threads use the NPT washers

Tol +0.7-0.2 on I/D

CARE POINTS

Chamfer all threads
All Threads must Gauge
No Bruising on the Threads
Must be Clean

General Tol ± 0.3MM Angles ±1°
Finish - See PD

Material Options include but not limited to -
Red Fibre (HAU)/White Nylon (HAR)/Neoprene (HAT)

REMOVE ALL SHARP EDGES

Issue	Date	Revision
9	26/10/20	Reference to Washer Type changed. Dhlr
8	20/04/20	3/8"NPT ADDED
7	31/05/17	1/4"NPT ADDED
6	01-12-14	PG21 size change ØA was 38.1 ØD was 28.5
5	28-07-14	Tol added 1.1/2"NPT dims changed
4	18-07-14	SC Symbols added
3	25-06-14	ET added
2	15-03-14	Updated
1	15-09-11	New drawing