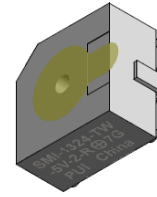




# PUIaudio



Data Sheet

SMI-1324-TW-5V-2-R-T/R

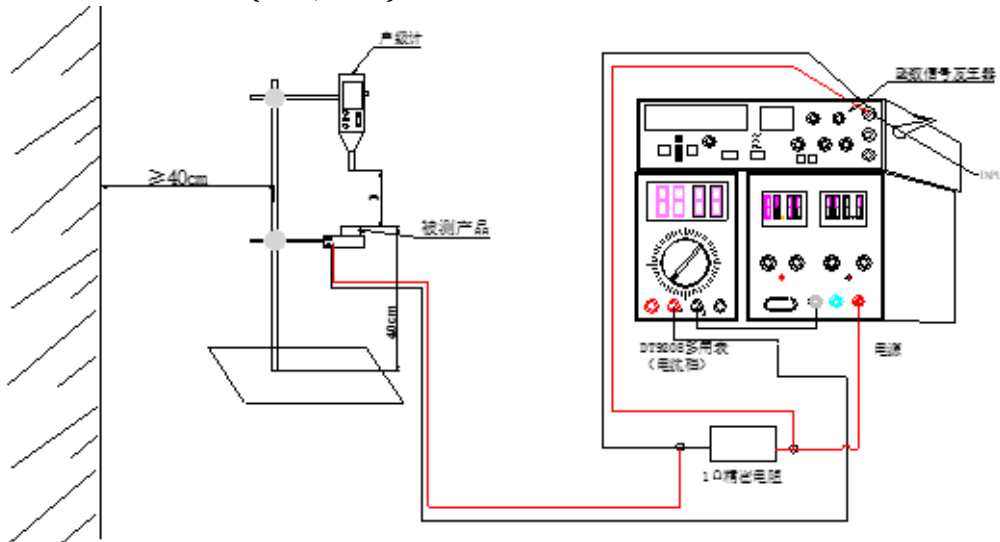
## Features:

- 5Vdc Electro-Mechanical SMD Indicator
- 2400Hz Resonant Frequency
- Reflow and Wash Allowed

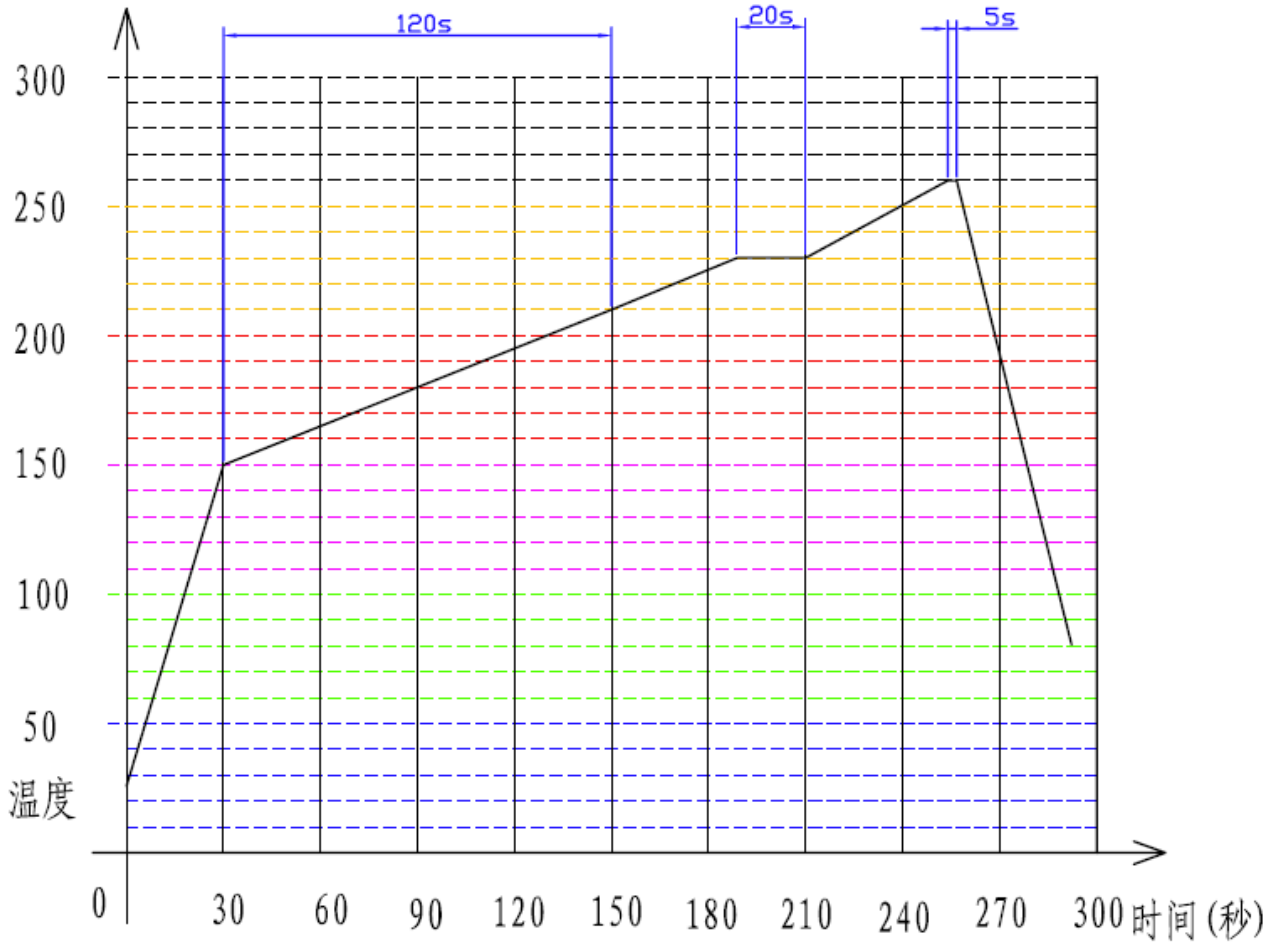
## Specifications

Parameters	Values	Units
Rated Voltage	5	VDC
Operating Voltage Range	4-7	VDC
Current Draw at Rated Voltage	30	mA
Minimum SPL @ 10cm	88	dBA
Resonant Frequency	2400 ± 400	Hz
Tone or Pulse Rate	Continuous Tone	-
Housing Material	PPS	-
Terminal Material	Sn plated Brass	-
Weight	2	Grams
Acceptable Soldering Methods	Hand Solder, Reflow Solder	See pages for soldering information
Environmental Compliances	ROHS/REACH	-
Moisture Sensitivity Level	Not Required	-
Storage Temperature	-40 to 85	°C
Operating Temperature	-40 to 85	°C

## Measurement Method (3Vdc, 10cm)

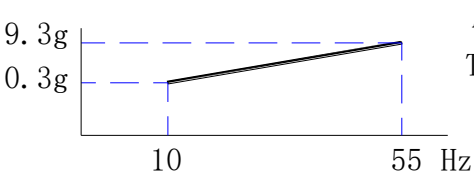


## Recommended Soldering Procedure



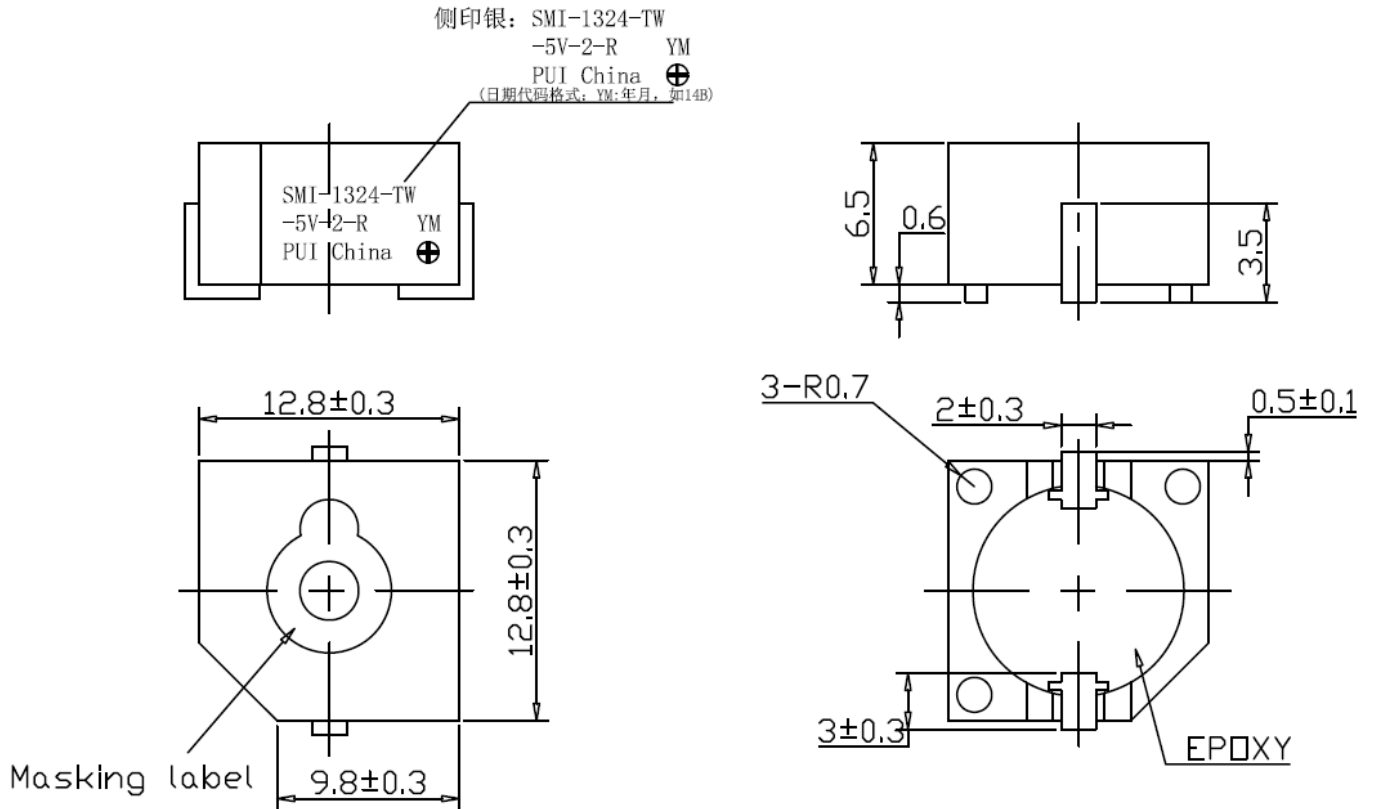
## Reliability Testing

Type of Test	Test Specifications
Storage High Temperature Test	Storage in $+85^{\circ}\text{C} \pm 2^{\circ}\text{C}$ test box for 96 hours, then expose to the room temperature for 2 hours without applying power.
Storage Low Temperature Test	Storage in $-40^{\circ}\text{C} \pm 2^{\circ}\text{C}$ test box for 96 hours, then expose to the room temperature for 2 hours without applying power
Humidity Test	Storage in $+40^{\circ}\text{C} \pm 2^{\circ}\text{C}$ 90-95%RH test box for 96 hours, then expose to the room temperature for 2 hours without applying power.
Temperature Cycle Testing	<p>Make this test for 5 cycles without applying power, then expose to the room temperature for 2 hours.</p>

Vibration Test	 <p>Amplitude: 1.5mm Time : 1min/axis</p> <p>Make this test for the directions of X,Y, Z for 2 hours each (total 6 hours).</p>
Drop Test	Free drop a unit from the height 100cm to the surface of 10mm thick board ,three directions(X,Y,Z).
Solderability Test	Soldering temp.: $260 \pm 5^{\circ}\text{C}$ Heat applying time: $3 \pm 0.5\text{sec}$ .

After tests, SPL shall be within  $\pm 5\text{dB}$

## Dimensions



## Packaging

450pcs per reel  
2250pcs master carton 35x35x20

### Specifications Revisions

Revision	Description	Date
-	Released from Engineering	8/2/2004
A	Revised Terminal Material	12/13/2004
B	Removed Lead Free Added RoHS note	8/10/2005
C	Added Note 4	11/2/2005
D	Revised Terminal Material	3/20/2006
E	Revised Temperatures Add Date Code	6/14/2006
F	Revised Layout Added Side Dimensions	8/16/2006
G	Revised to Inventor 3D Template	11/9/2007

Note:

- Unless otherwise specified:
  - All dimensions are in millimeters.
  - Default tolerances are  $\pm 0.5\text{mm}$  and angles are  $\pm 3^\circ$ .
- Specifications subject to change or withdrawal without notice.
- This part is RoHS 2015/863/EU compliant.
- Max Reflow temp is 260C.