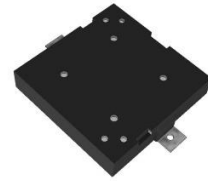




PUIaudio



Data Sheet

SMT-1341-TW-HT-R

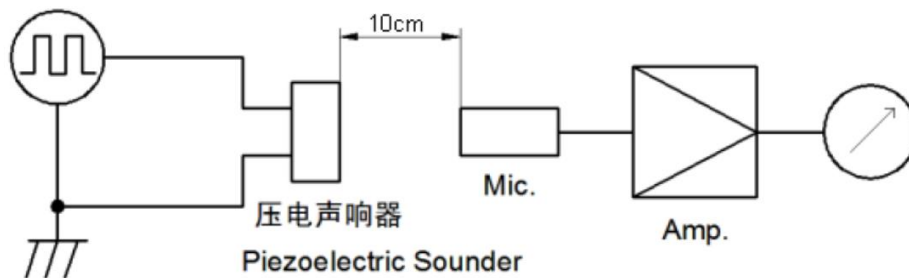
Features:

- Wide -40°C to +105°C operating temperature
- ≥85dB output at 10cm with 5Vp-p input
- Weighs only 0.5g
- Includes a wash-tab

Specifications

| Parameters | Values | Units |
|-------------------------------|----------------------------|-----------------------|
| Rated Voltage | 5 | Vp-p |
| Operating Voltage Range | 1 - 25 | Vp-p |
| Current Draw at Rated Voltage | ≤5 | mA |
| Capacitance (100Hz) | 16,000 ± 30% | pF |
| Minimum SPL @ 10cm | ≥85 | dBA |
| Resonant Frequency | 4100 ± 500 | Hz |
| Housing Material | LCP | - |
| Terminal Material | Sn plated Cu | - |
| Weight | 0.5 | Grams |
| Ingress Protection Rating | None | - |
| Acceptable Soldering Methods | Hand solder, Reflow solder | See following details |
| Environmental Compliances | ROHS/REACH | Exemption 7c-1 |
| Moisture Sensitivity Level | 5a | - |
| Storage Temperature | -40 to 120 | °C |
| Operating Temperature | -40 to 105 | °C |

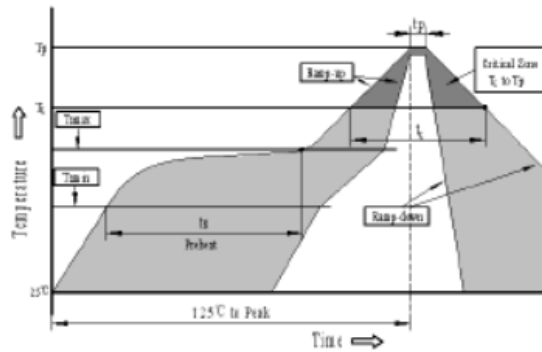
Measurement Method (5Vpp, 10cm)



Typical Frequency Response (5Vpp square wave sweep, 10cm)



Recommended Soldering Procedure



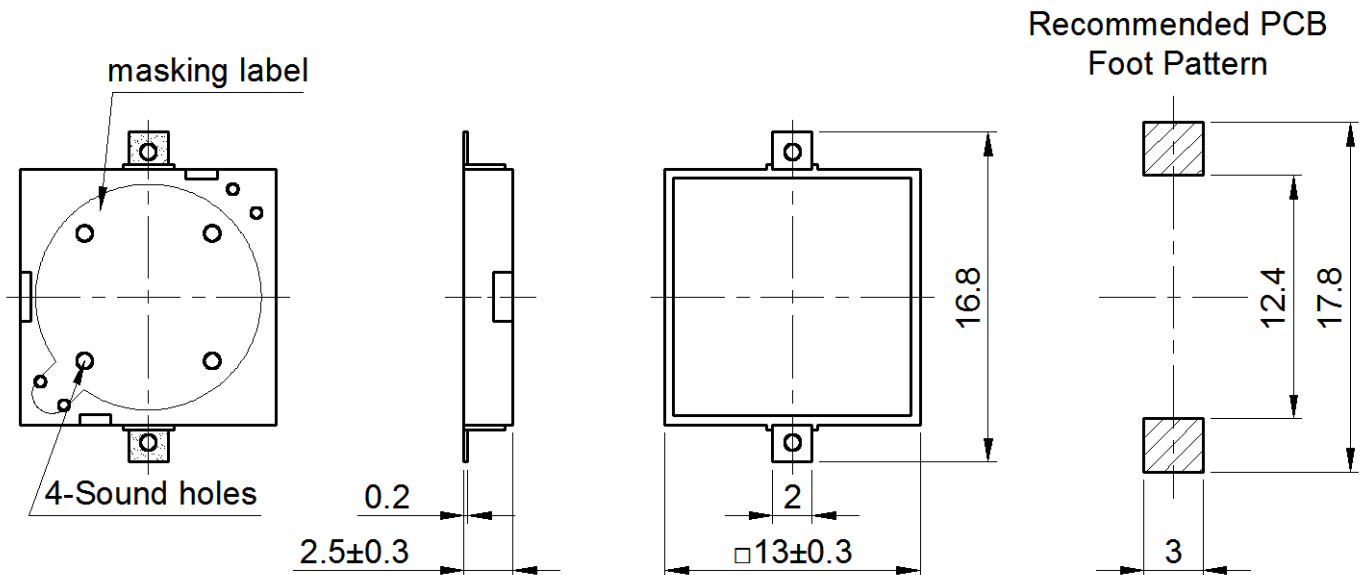
| Profile Feature | Pb-Free Assembly |
|---|------------------|
| Average ramp-up rate(T_L to T_p) | 3°C/second max. |
| Preheat | |
| -Temperature Min. (T_{Smin}) | 150°C |
| -Temperature Min. (T_{Smax}) | 200°C |
| -Temperature Min. (t_s) | 60~180 seconds |
| T_{Smax} to T_L | |
| -Ramp-up Rate | 3°C/second max. |
| Time maintained above: | |
| - Temperature(T_L) | 217°C |
| -Time(T_L) | 60~150 seconds |
| Peak temperature(T_p) | 245°C+0/-5°C |
| Time within 5°C of actual Peak temperature (t_p) | 6 seconds max. |
| Ramp-down Rate | 6°C/second max. |
| Time 25°C to Peak Temperature | 8 minutes max. |
| We suggest the customer do the reflow soldering once. | |

Reliability Testing

| Type of Test | Test Specifications |
|---------------------------|---|
| High Temperature Test | Test part at +120°C for 120 hours |
| Low Temperature Test | Test part at -40°C for 120 hours |
| Humidity Test | 40±2°C, 90~95% RH, 120 hours |
| Temperature Cycle Testing | Total 5 cycles, 1 cycle consisting of -40±2°C, 30 minutes 20±5°C 15 minutes 120±2°C, 30 minutes 20±5°C 15 minutes |
| Vibration Test | Sweep from 10 to 55 Hz and then 55 to 10 under single amplitude of 1.0mm in 1 minute. The vibration test shall consist of 2 hours per plane in each three mutually perpendicular planes for a total time of 6 hours |
| Shock Test | Sounder shall be measured after being applied shock (980m/s ²) for each three mutually perpendicular directions to each of 3 times by half sine wave. |
| Drop Test | Dropped naturally from 70cm height onto the surface of 10mm thick wooden board. 2 directions-upper and side of the part are to be applied. |

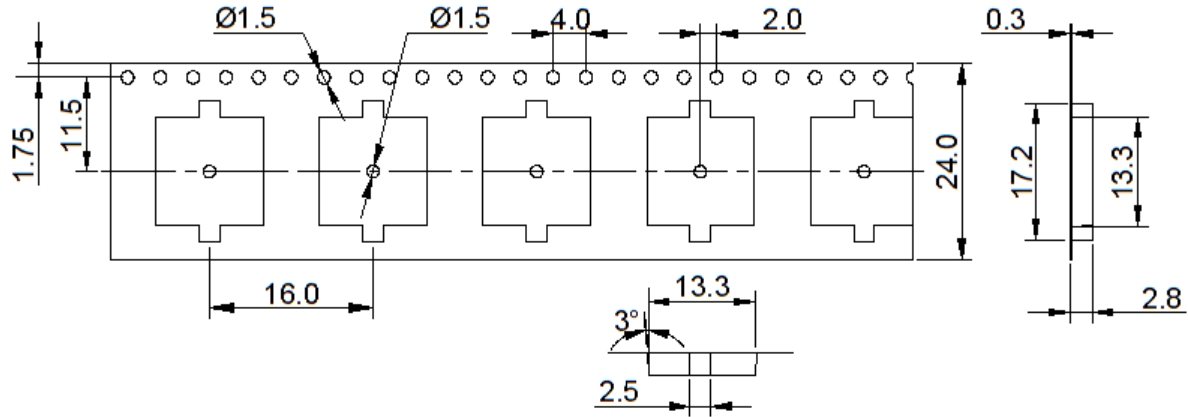
After being placed for 2 to 4 hours at room temperature, the product shall meet specifications, except the SPL should be in ±10dB compared with initial one.

Dimensions



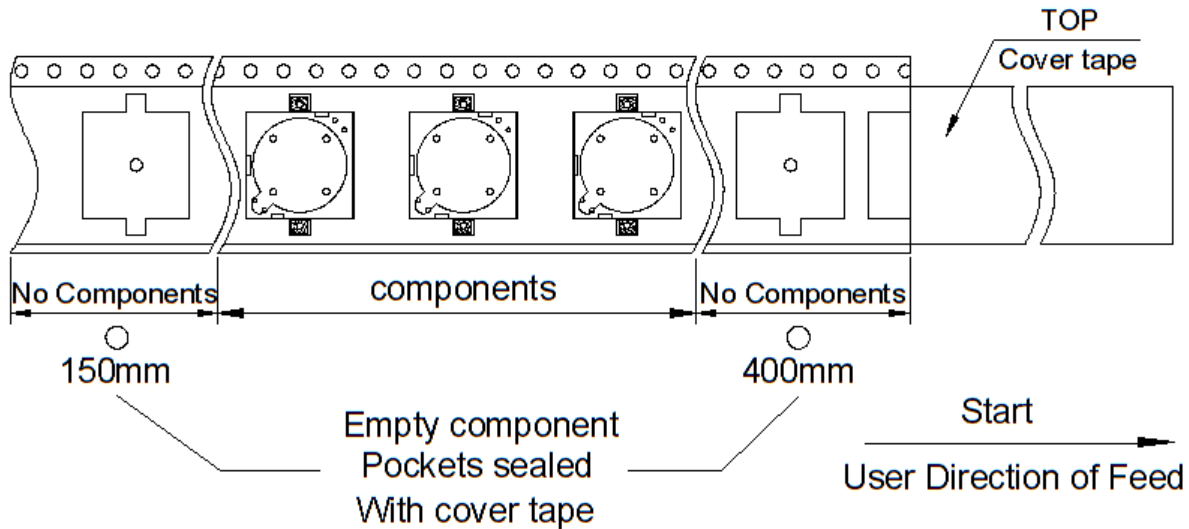
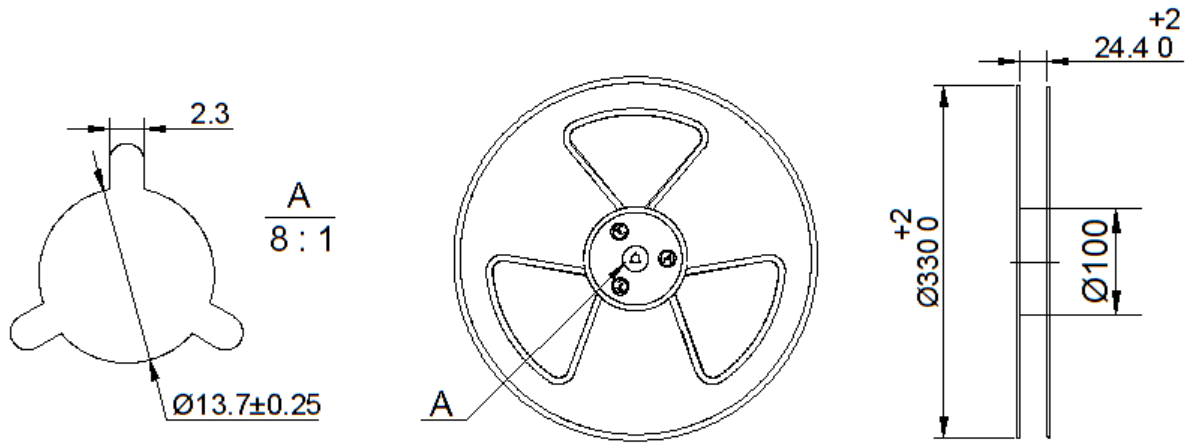
***Part is not washable**

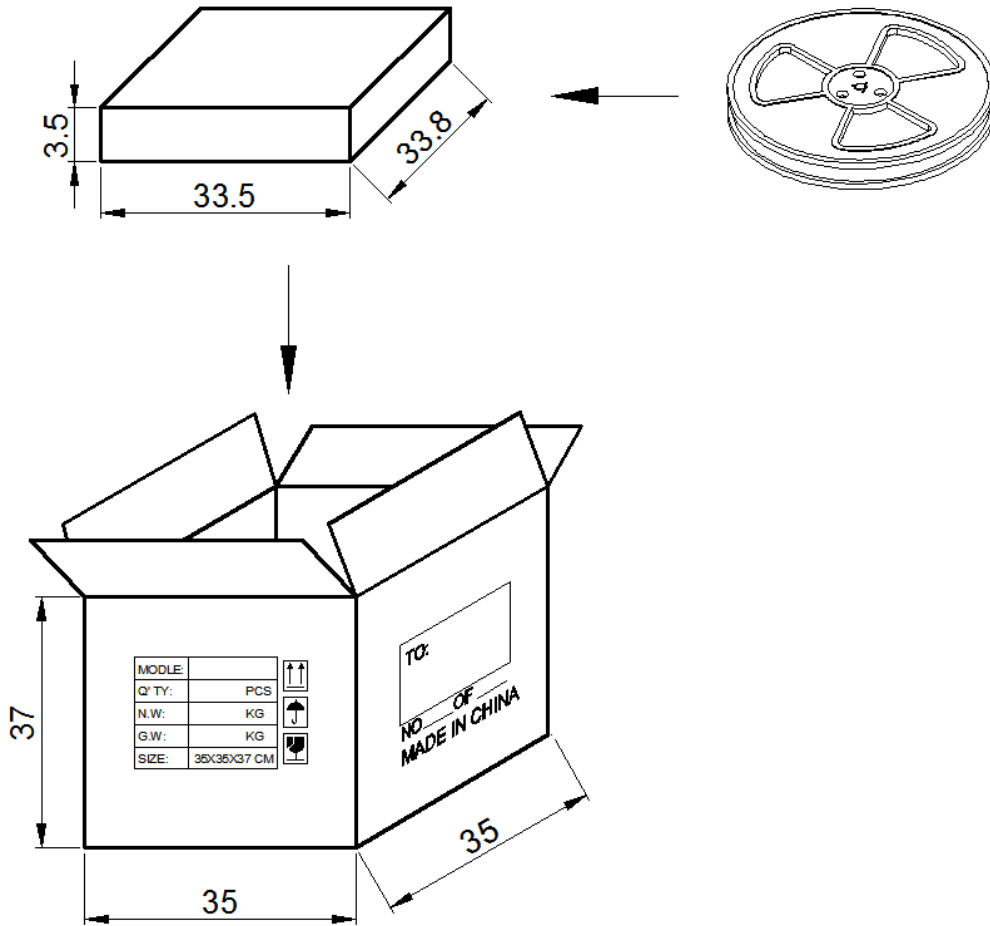
Packaging



NOTE:

1. 10 sprocket hole pitch cumulative tolerance ± 0.20 mm.
2. All dimensions meet EIA-481-D requirements.
3. Thickness: 0.3 ± 0.05 mm.
4. Component loaded per 13" reel: 1000pcs.





1000pcs/BOX
 10 Boxes/Carton

Specifications Revisions

| Revision | Description | Date |
|----------|---------------------------|------------|
| A | Released from Engineering | 10/31/2022 |

Note:

1. Unless otherwise specified:
 - A. All dimensions are in millimeters.
 - B. Default tolerances are $\pm 0.5\text{mm}$ and angles are $\pm 3^\circ$.
2. Specifications subject to change or withdrawal without notice.
3. Base Part: SMT-1341-T-HT-R.