

Actuator

46-
2W28.3CM0.001

Distribution by
Newark



coming soon



<https://newark.eao.com/p/46-2W28.3CM0.001>

Your product:

coming soon

46-2W28.3CM0.001 Actuator

FRONT

Front bezel material:	Metal
Front form:	round
Front bezel colour:	Silver
Front dimension:	Ø 30 mm

MOUNTING

Design:	raised
Mounting cut-out:	Ø 22.3 mm

OPERATING-/INDICATION PART

Lever shape:	short
Lever colour:	Green
Lever bar colour:	White
Lever material:	plastic

ELECTRICAL CHARACTERISTICS

Protection class:	II
--------------------------	----

MECHANICAL CHARACTERISTIC

Tightening torque:	2 ... 3 Nm (17.7 ... 26.6 Lb-in)
Switching positions:	2 positions
Weight:	0.038 kg

Mechanical lifetime: 1 Mio. cycles of operation
Switching angle: 90°
Switching action: Maintained - Maintained

AMBIENT CONDITION

Operating temperature: - 25 °C ... + 55 °C
Vibration resistance: 5g f= 2...500Hz (EN-IEC 60068-2-6)
Climate resistance: +25°C-97%RH / +45°C-93%RH (IEC-EN60068-2-30)
Shock resistance: 30g, 18ms (EN-IEC 60068-2-27)
50g, 11ms (EN-IEC 60068-2-27)
IK front protection: IK03
IP front protection: IP65

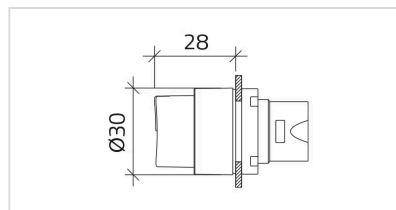
CERTIFICATE

Standards: CSA C22-2, IEC EN 60947-1, IEC EN 60947-5-1, UL508
Conformities: CE

OTHER

max. number of switching elements: 2
Housing material: Plastic
Short Description: Actuator, Ø 22.3 mm, Ø 30 mm, illuminative, Green, short, round, Silver, Metal, Maintained - Maintained, IP65, IK03
Housing colour: Black

Dimension drawings:



Switching positions:

