

Actuator

46-
2W28.1CE0.001

Distribution by
Newark



<https://newark.eao.com/p/46-2W28.1CE0.001>

Your product:



46-2W28.1CE0.001 Actuator

FRONT

Front bezel colour:	Black
Front form:	round
Front dimension:	Ø 30 mm
Front bezel material:	Plastic

MOUNTING

Design:	raised
Mounting cut-out:	Ø 22.3 mm

OPERATING-/INDICATION PART

Lever material:	plastic
Lever shape:	short
Lever bar colour:	Red
Lever colour:	Red

ELECTRICAL CHARACTERISTICS

Protection class:	II
-------------------	----

MECHANICAL CHARACTERISTIC

Switching angle:	90°
Switching positions:	2 positions
Tightening torque:	2 ... 3 Nm (17.7 ... 26.6 Lb-in)

Weight: 0.027 kg
Mechanical lifetime: 1 Mio. cycles of operation
Switching action: Maintained - Maintained

AMBIENT CONDITION

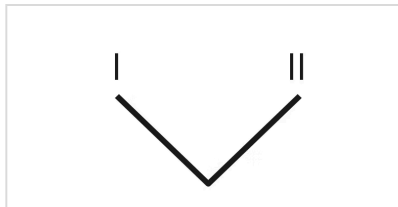
Operating temperature: - 25 °C ... + 55 °C
IP front protection: IP65
Climate resistance: +25°C-97%RH / +45°C-93%RH (IEC-EN60068-2-30)
IK front protection: IK03
Shock resistance: 30g, 18ms (EN-IEC 60068-2-27)
Vibration resistance: 5g f= 2...500Hz (EN-IEC 60068-2-6)

CERTIFICATE

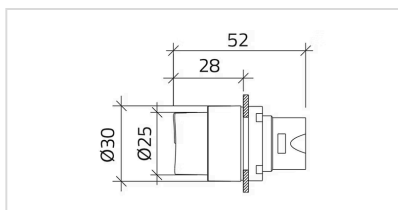
Conformities: CE
Standards: CSA C22-2, IEC EN 60947-1, IEC EN 60947-5-1, UL508

OTHER

Housing colour: Black
Short Description: Actuator, Ø 22.3 mm, Ø 30 mm, illuminative, Red, short, round, Black, Plastic, Maintained - Maintained, IP65, IK03
max. number of switching elements: 2
Housing material: Plastic
Switching positions:



Dimension drawings:



Mounting cut-outs:

