

# Actuator

46-  
2W28.1CN0.001

Distribution by  
Newark



<https://newark.eao.com/p/46-2W28.1CN0.001>

Your product:

---



## 46-2W28.1CN0.001 Actuator

### FRONT

<b>Front form:</b>	round
<b>Front bezel material:</b>	Plastic
<b>Front bezel colour:</b>	Black
<b>Front dimension:</b>	Ø 30 mm

### MOUNTING

<b>Design:</b>	raised
<b>Mounting cut-out:</b>	Ø 22.3 mm

### OPERATING-/INDICATION PART

<b>Lever material:</b>	plastic
<b>Lever colour:</b>	White
<b>Lever bar colour:</b>	White
<b>Lever shape:</b>	short

### ELECTRICAL CHARACTERISTICS

<b>Protection class:</b>	II
--------------------------	----

### MECHANICAL CHARACTERISTIC

<b>Tightening torque:</b>	2 ... 3 Nm (17.7 ... 26.6 Lb-in)
<b>Mechanical lifetime:</b>	1 Mio. cycles of operation
<b>Switching positions:</b>	2 positions

**Weight:** 0.027 kg  
**Switching angle:** 90°  
**Switching action:** Maintained - Maintained

#### AMBIENT CONDITION

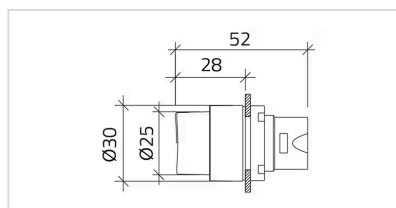
**Operating temperature:** - 25 °C ... + 55 °C  
**Climate resistance:** +25°C-97%RH / +45°C-93%RH (IEC-EN60068-2-30)  
**Shock resistance:** 30g, 18ms (EN-IEC 60068-2-27)  
**IP front protection:** IP65  
**Vibration resistance:** 5g f= 2...500Hz (EN-IEC 60068-2-6)  
**IK front protection:** IK03

#### CERTIFICATE

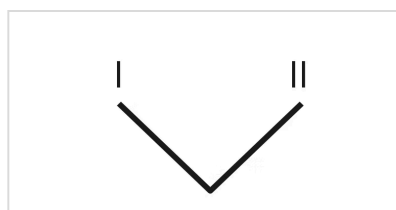
**Standards:** CSA C22-2, IEC EN 60947-1, IEC EN 60947-5-1, UL508  
**Conformities:** CE

#### OTHER

**max. number of switching elements:** 2  
**Short Description:** Actuator, Ø 22.3 mm, Ø 30 mm, illuminative, White, short, round, Black, Plastic, Maintained - Maintained, IP65, IK03  
**Housing material:** Plastic  
**Housing colour:** Black  
**Dimension drawings:**



**Switching positions:**



**Mounting cut-outs:**

