

Actuator

46-
2W44.3CP0.001

Distribution by
Newark



<https://newark.eao.com/p/46-2W44.3CP0.001>

Your product:



46-2W44.3CP0.001 Actuator

FRONT

Front form:	round
Front bezel material:	Metal
Front bezel colour:	Silver
Front dimension:	Ø 30 mm

MOUNTING

Mounting cut-out:	Ø 22.3 mm
Design:	raised

OPERATING-/INDICATION PART

Lever colour:	Red
Lever material:	plastic
Lever bar colour:	White
Lever shape:	short

ELECTRICAL CHARACTERISTICS

Protection class:	II
--------------------------	----

MECHANICAL CHARACTERISTIC

Mechanical lifetime:	1 Mio. cycles of operation
Switching action:	Maintained - Momentary
Switching positions:	2 positions

Tightening torque: 2 ... 3 Nm (17.7 ... 26.6 Lb-in)
Weight: 0.038 kg
Switching angle: 90°

AMBIENT CONDITION

IK front protection: IK03
Vibration resistance: 5g f= 2...500Hz (EN-IEC 60068-2-6)
Climate resistance: +25°C-97%RH / +45°C-93%RH (IEC-EN60068-2-30)
Operating temperature: - 25 °C ... + 55 °C
IP front protection: IP65
Shock resistance: 30g, 18ms (EN-IEC 60068-2-27)
50g, 11ms (EN-IEC 60068-2-27)

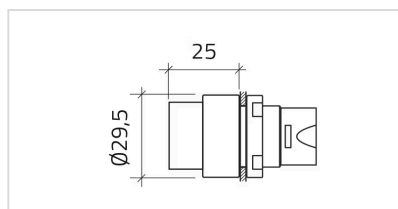
CERTIFICATE

Standards: CSA C22-2, IEC EN 60947-1, IEC EN 60947-5-1, UL508
Conformities: CE

OTHER

Housing material: Plastic
Housing colour: Black
max. number of switching elements: 2
Short Description: Actuator, Ø 22.3 mm, Ø 30 mm, illuminative, Red, short, round, Silver, Metal, Maintained - Momentary, IP65, IK03

Dimension drawings:



Switching positions:

