

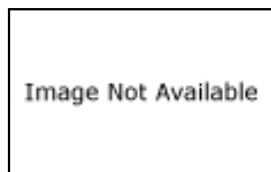


Home > Products > PCB level Position Sensors (Miniature Plastic package) > SS40 > Product Page

Order Product and Get Support

- U.S. Authorized Distributors
- Global Sales & Service
- N. American Sales Reps
- Distributor Inventory
- Technical Assistance
- White Papers
- Literature Request
- RoHS Product List
- Customer Feedback

SS41-L



SS40 Series Bipolar Hall-Effect Digital Position Sensor; radial lead IC package; Long leads

Features

Small size
Reverse power polarity protection
Current sinking output
Sensitive magnetic characteristics
Operating speed from 0 kHz to over 100 kHz

Potential Applications

Speed and RPM sensor
Brushless DC motor commutation
Motor and fan control
Magnetic encoding
Tachometer, counter pickup
Disc speed, tape rotation sensing
Flow-rate sensing

Description

SS41-Series Bipolar Hall Effect sensors respond to alternating North and South poles.

A built-in regulator provides stable operation over 4.5 Vdc to 24 Vdc supply voltage range, and internal circuitry prevents sensor damage in case the supply voltage polarity is accidentally reversed. The SS41 Series Bipolar Hall-effect sensors are small, versatile digital Hall-effect devices that are operated by the magnetic field from a permanent magnet or an electromagnet. The open-collector sinking output voltage is easily interfaced with a wide variety of electronic circuits.

NOTE: These digital Hall sensors have an operating temperature range of -40 °C to 125 °C [-40 °F to 257 °F], appropriate for commercial, consumer, and industrial environments.

Supporting Documentation

- **Required Accessories—Magnets**

| Product Specifications | |
|------------------------------------|--|
| Product Type | Hall-Effect Digital Position Sensor IC |
| Package Style | Radial Lead IC, 0.735 in leads |
| Supply Voltage | 4.5 Vdc to 24.0 Vdc |
| Output Type | Sink |
| Termination Type | PC Board |
| Magnetic Actuation Type | Bipolar |
| Operating Temperature Range | -40 °C to 150 °C [-40 °F to 302 °F] |
| Storage Temperature | -40 °C to 150 °C [-640 °F to 302 °F] |
| Output Voltage | 0.4 Vdc max. |
| Switching Time Rise (10 % to 90 %) | 1.5 µs max. |
| Switching Time Fall (90 % to 10 %) | 1.0 µs max. |
| Availability | Global |
| Supply Current (max. @ 25 °C) | 15 mA |
| Output Current (max.) | 20 mA |
| Operate Point @ 25 °C | 15.0 mT [150 G] max. |
| Release Point @ 25 °C | -14.0 mT [-140 G] min. |
| Leakage Current max. | 10 µA |
| Differential | 4.0 mT [40 G] min. |
| Series Name | SS40 |

Keyword Search

Search for product and support information.

All Sensing and Control

Product Search

Part number search:

Use (*) to expand search

Specification Search