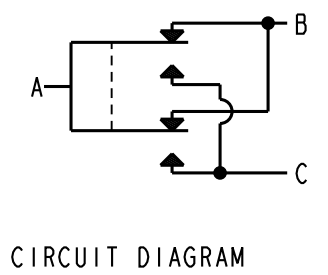
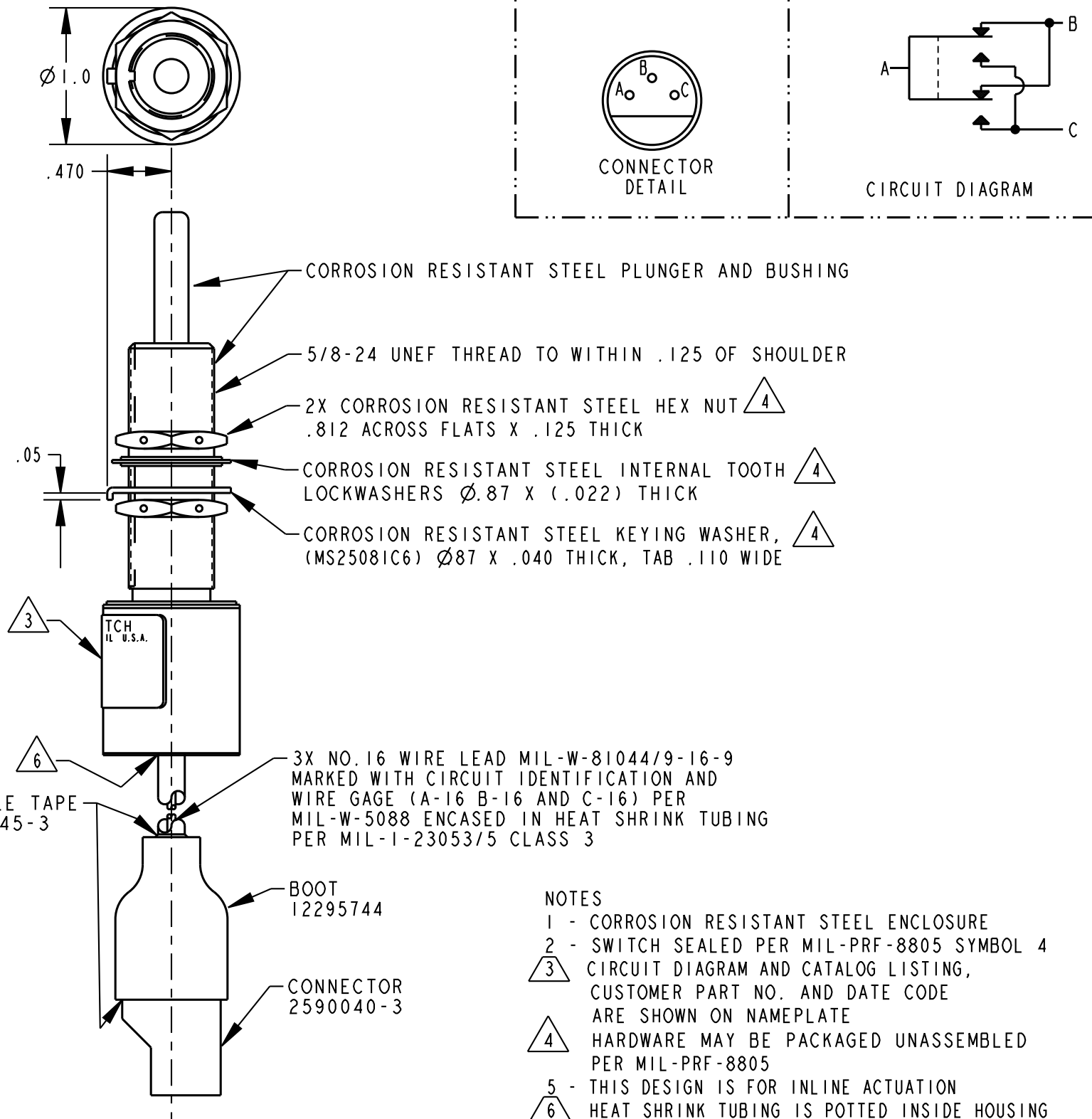
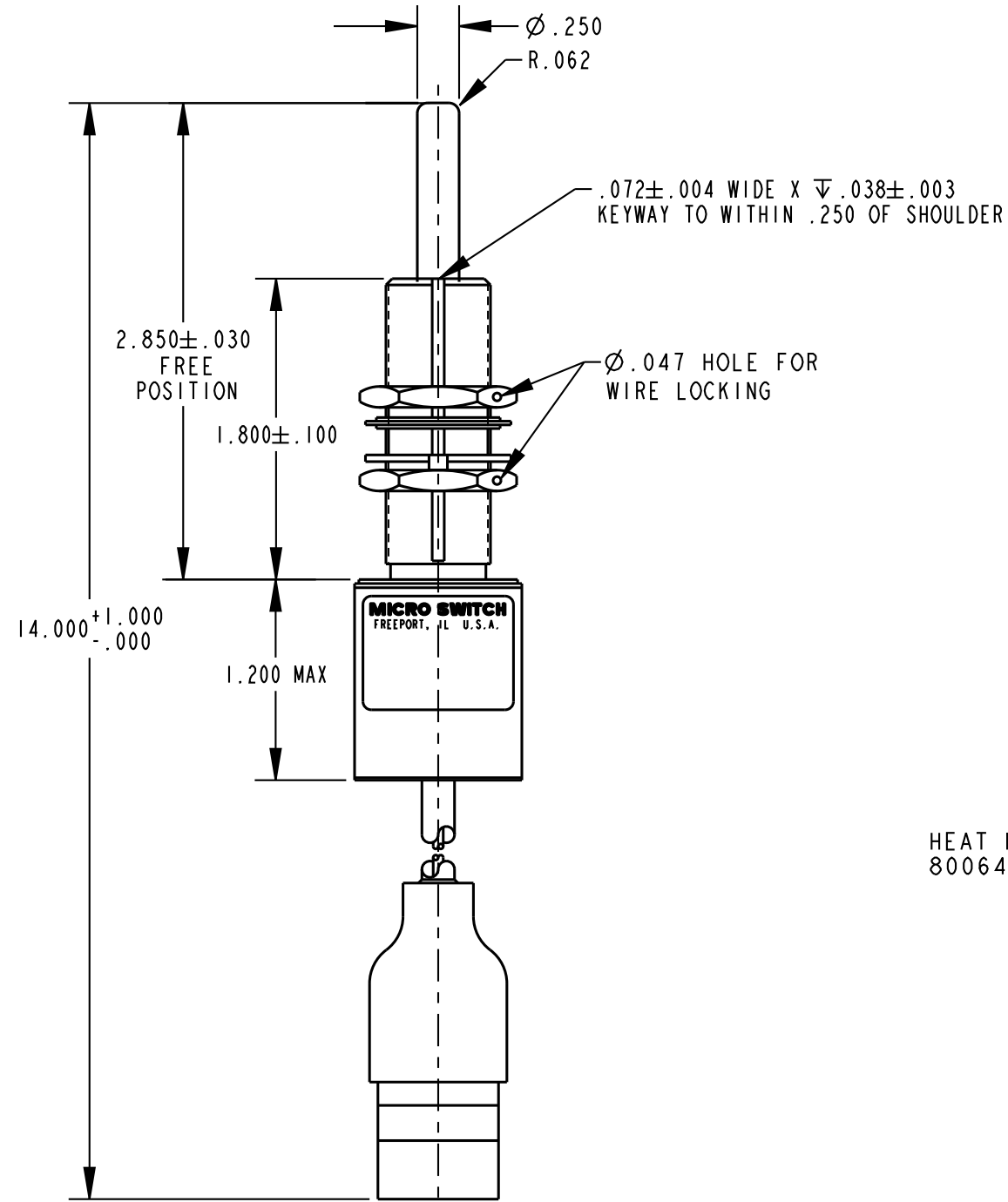


**MICRO SWITCH**  
a Honeywell Division  
FED. MFG. CODE 91929

**SWITCH - ENCLOSED**

CATALOG LISTING  
**1EN370**  
U.S. ARMY DRAWING  
19207-12307184

PTC/CAD 2D  
 DRAWN TSM 15OCT02  
 CHECK SAV 15OCT01  
 CHECK 01AUG11  
 CMH 01AUG11  
 CHECK 01AUG11  
 PS7AP 31AUG04  
 B 0006651  
 TSM 15OCT02  
 A 206642  
 REVISIONS  
 ISSUE 17  
 M  
 CATALOG LISTING  
 1EN370  
 PAGE 1 OF 1  
 RELEASE NO. PR-14120  
 REPLACES -



- NOTES
- 1 - CORROSION RESISTANT STEEL ENCLOSURE
  - 2 - SWITCH SEALED PER MIL-PRF-8805 SYMBOL 4
  - 3 - CIRCUIT DIAGRAM AND CATALOG LISTING, CUSTOMER PART NO. AND DATE CODE ARE SHOWN ON NAMEPLATE
  - 4 - HARDWARE MAY BE PACKAGED UNASSEMBLED PER MIL-PRF-8805
  - 5 - THIS DESIGN IS FOR INLINE ACTUATION
  - 6 - HEAT SHRINK TUBING IS POTTED INSIDE HOUSING

THIS DRAWING COVERS A PROPRIETARY ITEM AND IS THE PROPERTY OF MICRO SWITCH, A DIVISION OF HONEYWELL. THIS DRAWING IS NOT TO BE COPIED OR USED WITHOUT THE APPROVAL OF MICRO SWITCH

THIRD ANGLE PROJECTION

CHARACTERISTICS	
OPERATING FORCE	4-8 LBS
FULL OVERTRAVEL FORCE	20 LBS MAX
RELEASE FORCE	3 LBS MIN
PRETRAVEL	.015-.040
DIFFERENTIAL TRAVEL	.020 MAX
TOTAL TRAVEL	.900 MIN

ELECTRICAL DATA		
CONTACT ARRANGEMENT 2X S P D T		
LOAD	28 VDC	
	SEA LEVEL	50,000 FT
RES	4	4
IND	2	2
MOTOR		

SCALE FULL	
DO NOT SCALE PRINT	
UNLESS OTHERWISE SPECIFIED TOLERANCES ARE	
ONE PLACE	(.0) ±.030
TWO PLACE	(.00) ±.015
THREE PLACE	(.000) ±.005
ANGLES	±
WEIGHT	6 OZ MAX

ANSI Y14.5M-1982 APPLIES