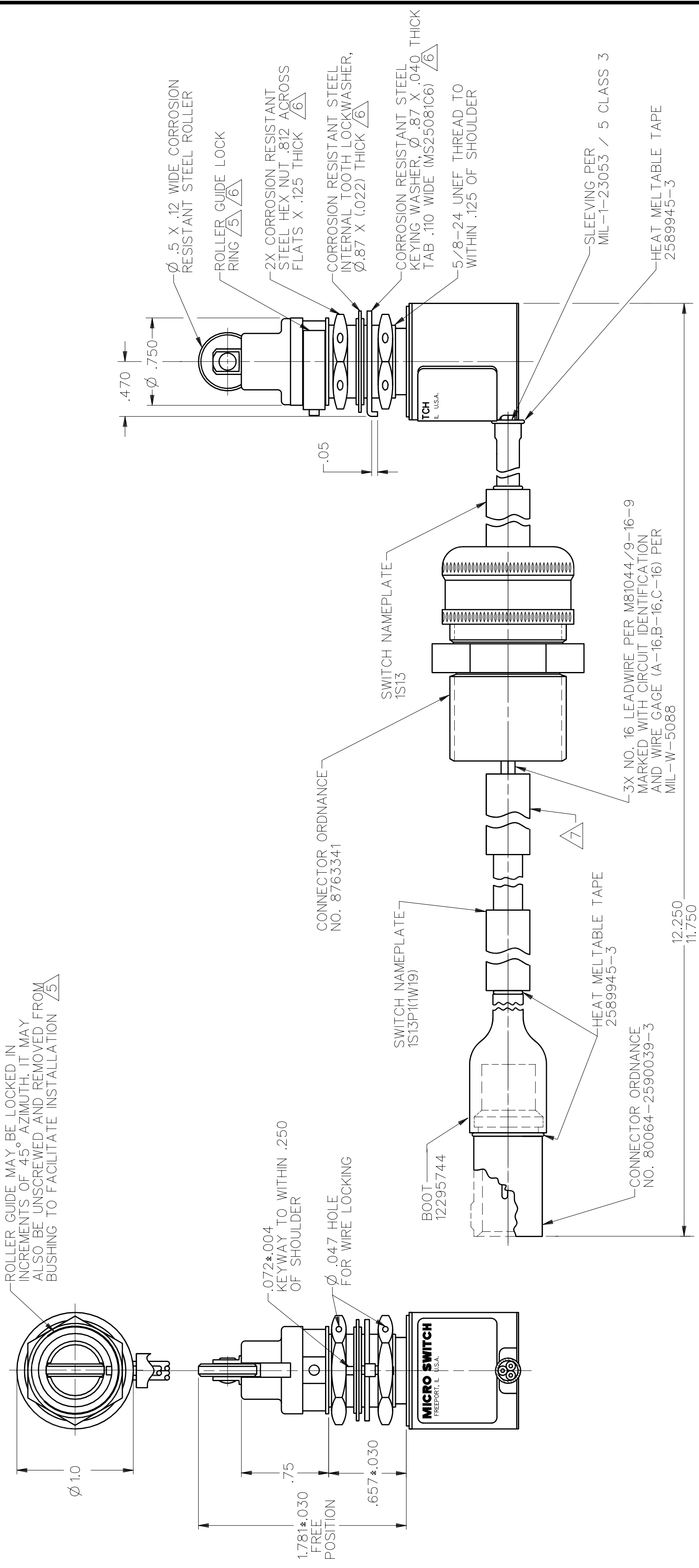


ROLLER GUIDE MAY BE LOCKED IN INCREMENTS OF 45° AZIMUTH. IT MAY ALSO BE UNSCREWED AND REMOVED FROM BUSHING TO FACILITATE INSTALLATION $\nabla 5$



- NOTES
- 1 - CORROSION RESISTANT STEEL ENCLOSURE
 - 2 - SWITCH SEALED PER MIL-S-8805 SYMBOL 4
 - 3 - CIRCUIT DIAGRAM AND CATALOG LISTING ARE SHOWN ON NAMEPLATE
 - 4 - COINCIDENCE OF OPERATING AND RELEASING POINTS: .010 OF PLUNGER TRAVEL
 - $\nabla 5$ TO ADJUST ROLLER DIRECTION, REMOVE ROLLER GUIDE LOCK RING, SCREW ROLLER GUIDE DOWN AS FAR AS POSSIBLE, THEN UNSCREW TO DESIRED DIRECTION. SECURE BY REPLACING ROLLER GUIDE LOCK RING
 - $\nabla 6$ HARDWARE MAY BE PACKAGED UNASSEMBLED PER MIL-S-8805 NAMEPLATE WITH THE FOLLOWING INFORMATION: 19207-12328970 MFR-80212

CHARACTERISTICS		ELECTRICAL DATA	
OPERATING FORCE	6-12 LBS	CONTACT ARRANGEMENT	S P D T
FULL TRAVEL FORCE	30 LBS MAX	LOAD	28 VDC
RELEASE FORCE	4 LBS MIN	SEA LEVEL	50,000 FT
PRETRAVEL	.040 MAX	RES	4
DIFFERENTIAL TRAVEL	.020 MAX	TND	2
OVERTRAVEL	.250 MIN	MOTOR	4

THIS DRAWING COVERS A PROPRIETARY ITEM AND IS THE PROPERTY OF MICRO SWITCH, A DIVISION OF HONEYWELL. THIS DRAWING IS NOT TO BE COPIED OR USED WITHOUT THE APPROVAL OF MICRO SWITCH.

MICRO SWITCH
a Honeywell Division
FED. MFG. CODE 91929

CATALOG LISTING
21EN381
U.S. ARMY DRAWING
19207-12328970

SWITCH - ENCLOSED

THIRD ANGLE PROJECTION	DO NOT SCALE PRINT
SCALE 1.5 : 1	UNLESS OTHERWISE SPECIFIED TOLERANCES ARE
	ONE PLACE (.) $\pm .030$
	TWO PLACES (.00) $\pm .015$
	THREE PLACES (.000) $\pm .005$
	ANGLES
	WEIGHT

ANSI Y14.5M-1982 APPLIES MASTER REDUCED