

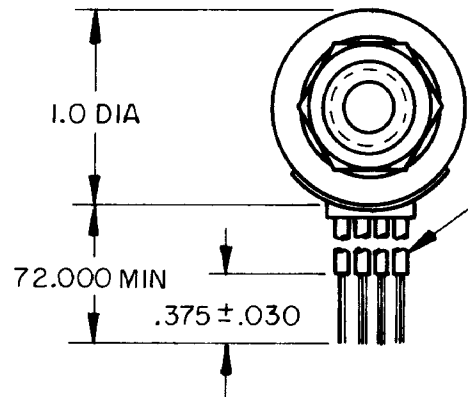
MICRO SWITCH

FREI PORT ILLINOIS U S A
A DIVISION OF HONEYWELL

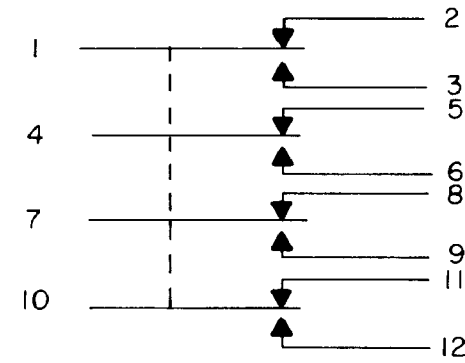
FED MFG CODE 91929

SWITCH - ENCLOSED

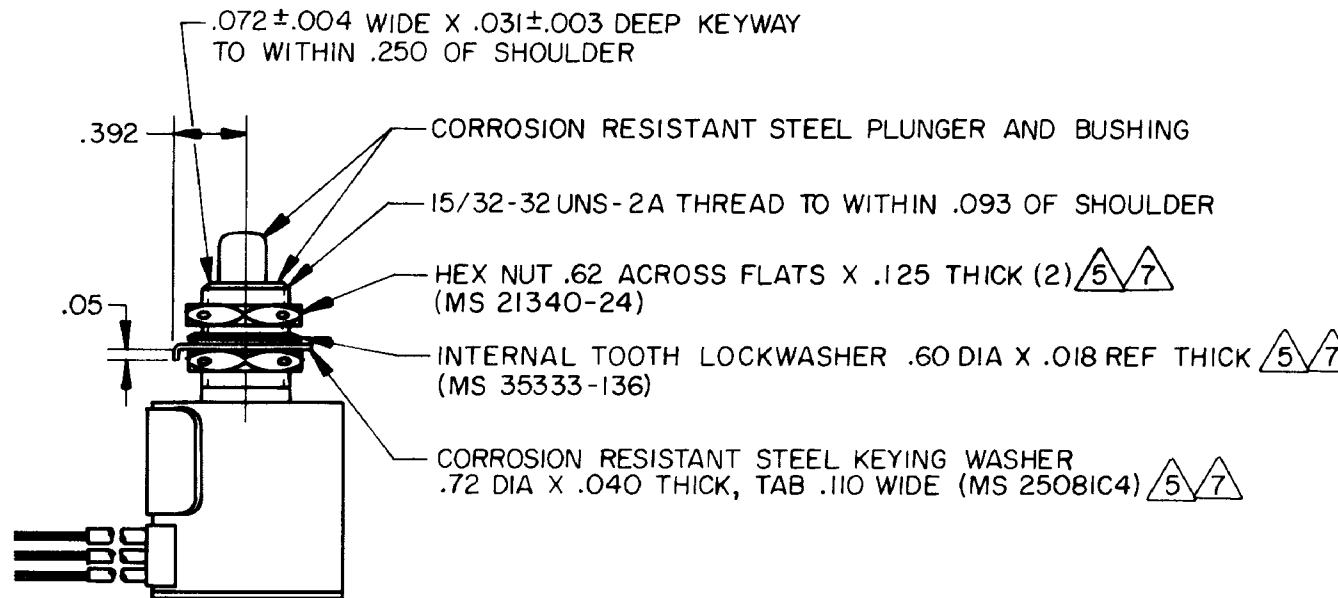
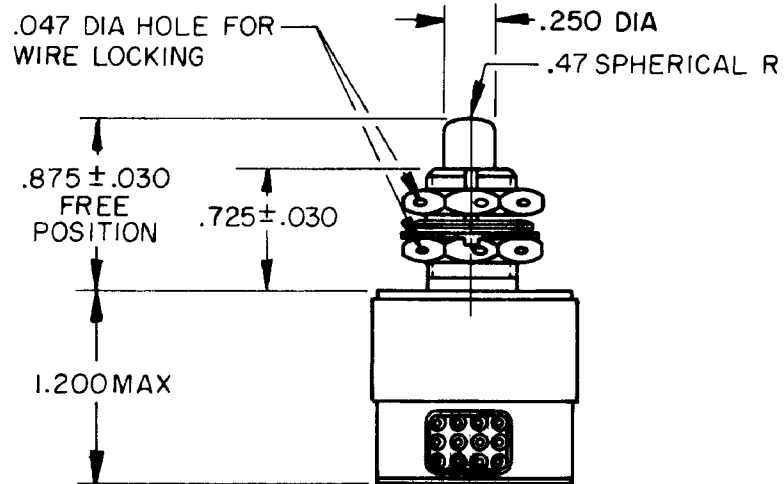
CATALOG LISTING
604HE1-6



(12) NO. 20 WIRE LEAD PER MIL-W-22759/7 MARKED WITH IDENTIFICATION AND WIRE GAGE (1-20, 2-20, ETC) PER MIL-W-5088



CIRCUIT DIAGRAM



CATALOG LISTING
 604HE1-6
 PAGE 1 OF 1
 ISSUE 4
 REVISIONS
 A PR16876 TSK 27 FEB 89
 B CO 70465 DAW 8 JUL 91
 C CO93183 JAS 12 JUN 98
 FORMTEK DRAWN
 TSK 27 FEB 89
 CHECK DAW 27 MAY 89
 CHECK
 REPLACES RELEASE NO. PR-16876

THIS DRAWING COVERS A PROPRIETARY ITEM AND IS THE PROPERTY OF MICRO SWITCH A DIVISION OF HONEYWELL THIS DRAWING IS NOT TO BE COPIED OR USED WITHOUT THE APPROVAL OF MICRO SWITCH		SCALE FULL
DO NOT SCALE PRINT		UNLESS OTHERWISE SPECIFIED TOLERANCES ARE
CHARACTERISTICS	ELECTRICAL DATA	ONE PLACE (.0) ± .030
OPERATING FORCE ----- 5-12 LB	CONTACT ARRANGEMENT	TWO PLACE (.00) ± .015
FULL OVERTRAVEL FORCE ----- 30 LB MAX	S P D T (4)	THREE PLACE (.000) ± .005
RELEASE FORCE ----- 3 LB MIN	LOAD 28 VDC	ANGLES ±
PRETRAVEL ----- .040 MAX	SEA LEVEL & 50,000 FT	THIRD ANGLE PROJECTION
DIFFERENTIAL TRAVEL ----- .020 MAX	RES 7	IND 4
OVERTRAVEL ----- .125 MIN	IND 4	MOTOR 4
		WEIGHT

- NOTES**
- 1 - CORROSION RESISTANT STEEL ENCLOSURE
 - 2 - SWITCH SEALED PER MIL-S-8805 SYMBOL 5
 - 3 - COINCIDENCE OF OPERATING AND RELEASING POINTS: .010 INCH OF PLUNGER TRAVEL
 - 4 - CIRCUIT DIAGRAM, CATALOG LISTING, ARE SHOWN ON NAMEPLATE
 - 5 - REPLACEMENT MOUNTING HARDWARE - PACKET 19PA9
 - 6 - OPERATION IN TEMPERATURE RANGE OF -65°F TO PLUS 257°F
 - 7 - HARDWARE MAY BE PACKAGED UNASSEMBLED PER MIL-S-8805