

# MICRO SWITCH

FREEPORT ILLINOIS, U.S.A  
A DIVISION OF HONEYWELL  
FED. MFG. CODE 91929

# SWITCH-BASIC

CATALOG LISTING

## 4HS143-120

4HS143-120

PAGE 1 OF 1

**M**

DRAWING NUMBER

ISSUE 13

REVISIONS

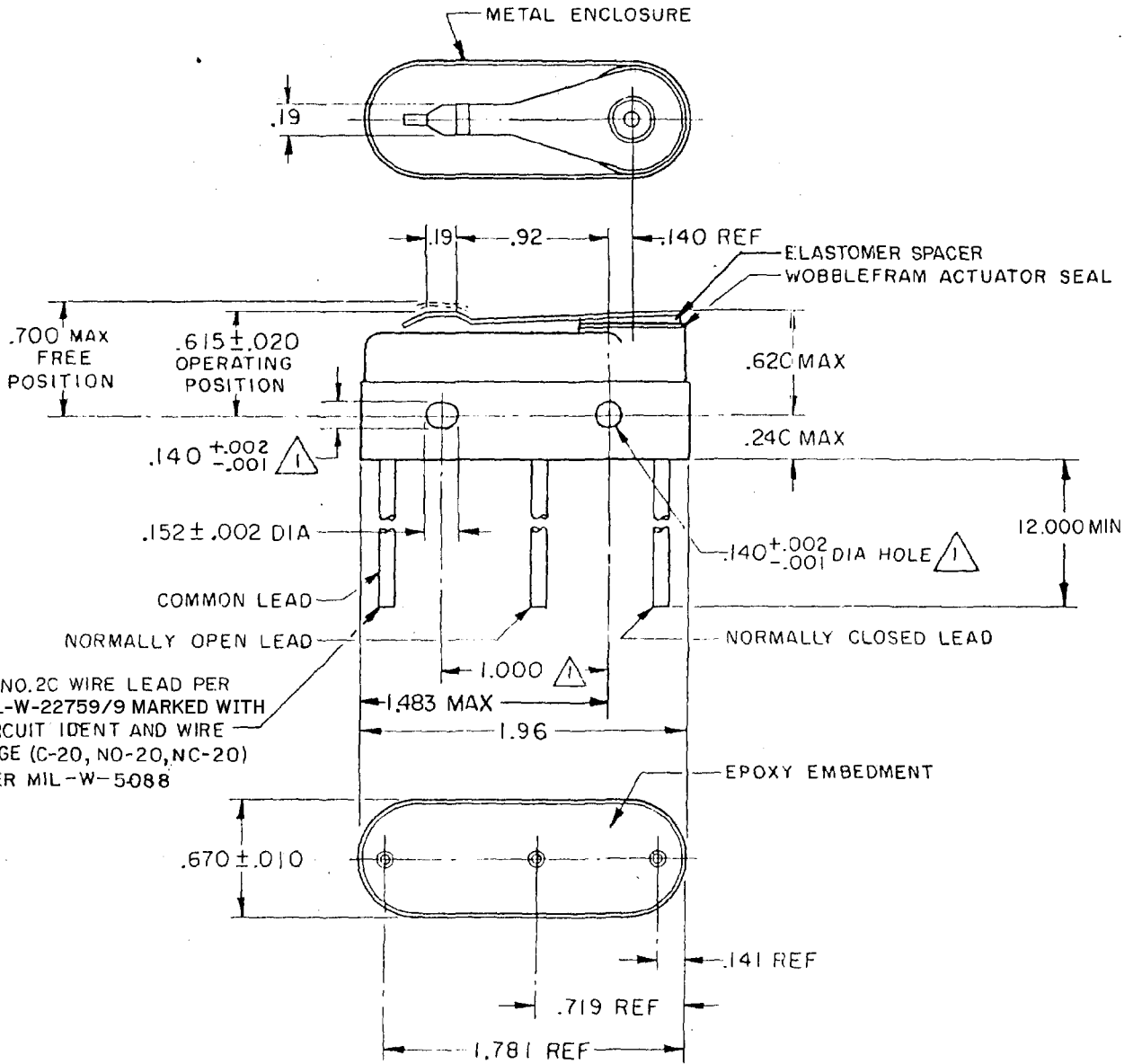
A	CO-94122
	TSM 17 MAR 99
B	0004792
	TCC/AP 15 APR 04

FO-52848-A  
FORMTEK  
DRAWN

REPLACES

RELEASE NO. PR-8841

C J H 5 JUN 80



- NOTE -
- 1 MOUNTING HOLES WILL ACCEPT PINS OR SCREWS OF .139 MAX DIA ON 1.000 ± .002 CENTERS
  - 2 FOR USE IN AMBIENT TEMPERATURE RANGE FROM -65° TO +250° F
  - 3 WEIGHT OF SWITCH ONLY IS 1.5 OZ MAX WEIGHT OF CONDUCTOR GROUP ONLY IS 0.3 OZ MAX PER FOOT

THIS DRAWING COVERS A PROPRIETARY ITEM AND IS THE PROPERTY OF MICRO SWITCH, A DIVISION OF HONEYWELL. THIS DRAWING IS NOT TO BE COPIED OR USED WITHOUT THE APPROVAL OF MICRO SWITCH.

CHARACTERISTICS	
OPERATING FORCE	15-35 OZ
RELEASE FORCE	4 OZ MIN
PRETRAVEL	.085 MAX
DIFFERENTIAL TRAVEL	.020 MAX
OVERTRAVEL	.010 MIN

ELECTRICAL DATA		
CONTACT ARRANGEMENT S P D T		
LINE VOLTAGE	INDUCTIVE LOAD	RESISTIVE LOAD
28 VDC	8 AMP	10 AMP
125 VAC	1 AMP	.5 AMP

SCALE: FULL

DO NOT SCALE PRINT

TOLERANCES  
APPLY TO DESIGN UNITS. CONVERSIONS ARE ONLY FOR REFERENCE. UNLESS NOTED, TOLERANCES ARE ±

DIM.	TOL.	DIM.	TOL.	
mm	mm/in	In	mm/in	
NO PLACES	X	1/.04	X.X	0.8/.03
ONE PLACES	X.X	0.4/.016	X.XX	0.38/.015
TWO PLACES	X.XX	0.15/.006	X.XXX	0.13/.005
THREE PLACES	X.XXX			

ANGLES

DESIGN UNITS  SI METRIC  US CUSTOMARY

WEIGHT  $\Delta$