

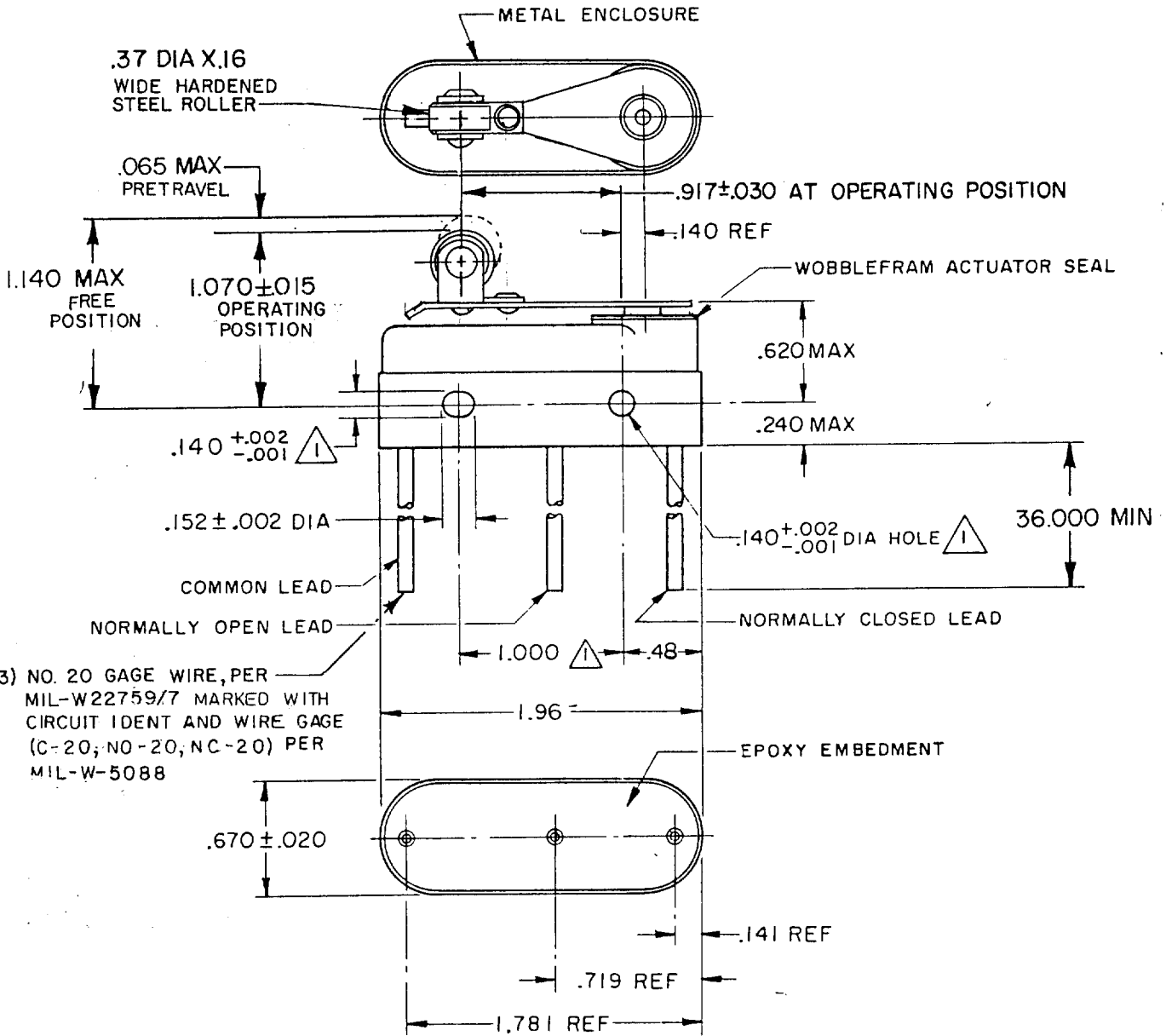
MICRO SWITCH

FREEMPORT ILLINOIS, U.S.A
A DIVISION OF HONEYWELL
FED. MFG. CODE 91929

SWITCH-BASIC

CATALOG LISTING

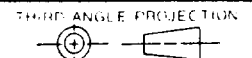
4HS149-320



(3) NO. 20 GAGE WIRE, PER MIL-W22759/7 MARKED WITH CIRCUIT IDENT AND WIRE GAGE (C-20; NO-20; NC-20) PER MIL-W-5088

- NOTE -
- ① MOUNTING HOLES WILL ACCEPT PINS OR SCREWS OF .139 MAX DIA ON 1.000 ± .002 CENTERS
 - 2 - FOR USE IN AMBIENT TEMPERATURE RANGE FROM -65° TO +250° F
 - ③ WEIGHT OF SWITCH ONLY IS 1.7 OZ MAX WEIGHT OF CONDUCTOR GROUP ONLY IS 0.5 OZ MAX PER FOOT

THIS DRAWING COVERS A PROPRIETARY ITEM AND IS THE PROPERTY OF MICRO SWITCH, A DIVISION OF HONEYWELL. THIS DRAWING IS NOT TO BE COPIED OR USED WITHOUT THE APPROVAL OF MICRO SWITCH.



CHARACTERISTICS	ELECTRICAL DATA			SCALE FULL			
	CONTACT ARRANGEMENT S P D T			DO NOT SCALE PRINT			
OPERATING FORCE — — — 10-22 OZ	LINE VOLTAGE	INDUCTIVE LOAD	RESISTIVE LOAD	TOLERANCES			
RELEASE FORCE — — — 4 OZ MIN				APPLY TO DESIGN UNITS. CONVERSIONS ARE ONLY FOR REFERENCE. UNLESS NOTED TOLERANCES ARE:			
DIFFERENTIAL TRAVEL — — .020 MAX	28 VDC	8 AMP	10 AMP	DIV. mm	TOL. mm/in	DIV. in	TOL. mm/in
OVERTRAVEL — — — .010 MIN	125 VAC	1 AMP	.5 AMP	NO PLACES X	1/04	X X	0.07/03
				ONE PLACE X, X	0.4/016	X X X	0.38/015
				TWO PLACES X, X X	0.15/.006	X X X X	0.13/.005
				THREE PLACES X, X, X, X			
				ANGLES			
				DESIGN UNITS	SI METRIC		US CUSTOMARY
				WEIGHT			③

4HS149-320

M

DRAWING NUMBER

7

ISSUE

REPLACES
RELEASE NO. PR-13536
PAGE 1 OF 1

REVISIONS

A	PR	13536	TAD	4 DEC 84
B	CO	61043	TSK	29 AUG 88
C	CO	66499	TJO	5 DEC 89
D	CO	71281	DAW	22 OCT 91
E	CO	75625	JDB	14 JULY 93
F	CO	94122	TSM	17 MAR 99

CHECK

DEC 94

DEC 88

DEC 84

DEC 80

FO-52848-A FORMTEK

DRAWN

TAD 4 DEC 84